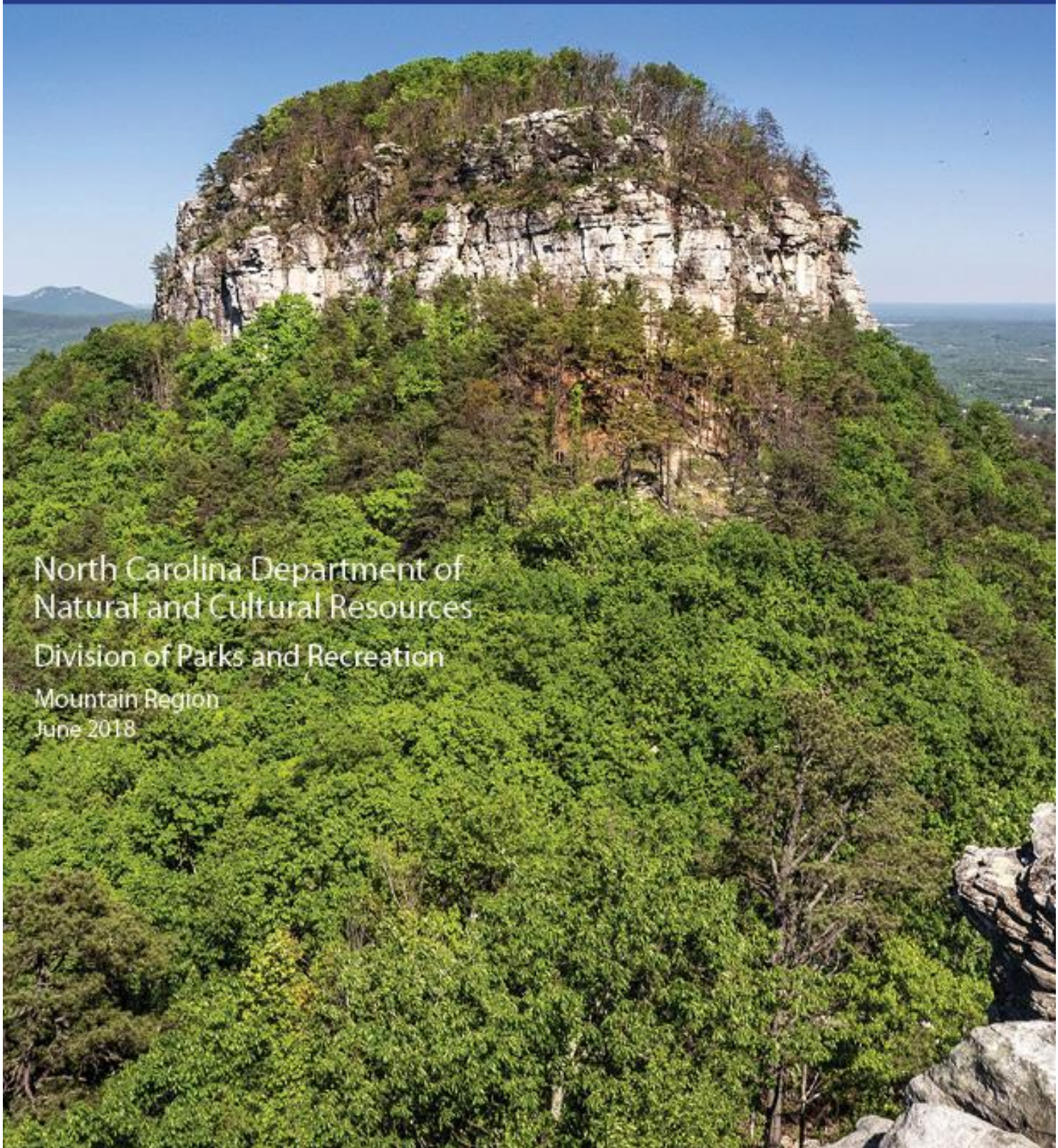


Pilot Mountain State Park General Management Plan



North Carolina Department of
Natural and Cultural Resources
Division of Parks and Recreation
Mountain Region
June 2018



I. MISSION AND PURPOSE

General Management Plans:

The North Carolina General Statute 143B-135.52 requires each park to have an individual General Management Plan. As required, these plans seek to identify an individual parks purpose as a unit within the larger parks system and provide an analysis of the parks major resources and facilities. The General Management Plan also identifies current and future needs of the park and prioritizes a list of proposed projects intended to meet those identified needs. These plans are considered living documents, recognizing the various and dynamic factors which influence the planning process. Each park's GMP is scheduled to be revisited every five years, or sooner if needed, to reflect the direction and vision of the State Parks Division.

State Parks Mission

The 1987 State Parks Act also defines the purpose of the state parks system is within the mission statement. It establishes that: the State of North Carolina offers unique archaeological, geologic, biologic, scenic and recreational resources. These resources are part of the heritage of the people of this State. The heritage of a people should be preserved and managed by those people for their use and for the use of their visitors and descendants.

PARK PURPOSE:

Pilot Mountain rises above the Piedmont landscape to form one of the most recognizable natural landmarks in North Carolina. The mountain was once a guiding landmark to Native Americans, as well as travelers on the Great Wagon Road. It served as a destination for recreational outings for generations and was commercially operated as a scenic attraction. The distinctive and natural features of this prominent peak inspired area citizens to organize for its protection. Therefore, in 1967 the Pilot Mountain Preservation and Park Committee, Inc. was formed to preserve the mountain,





preventing potential commercial development. The committee raised funds and advocated for a new State Park unit. In 1968, Pilot Mountain was purchased with private donations and federal grants. It became the North Carolina's 14th State Park. Continued advocacy efforts by local citizens led to the successful establishment of the Yadkin River Section and connecting corridor in 1970. The location of the park along U.S. 52 and in the Triad region offers visitors an opportunity to see a key landmark and escape from urban areas.

Pilot Mountain State Park preserves significant scenic resources, which include the views of Pilot Mountain summit from the surrounding area, as well as the panoramic vistas from the summit of the mountain. The distinct profile of the mountain is identified, even from great distances. Because Pilot Mountain rises far above the surrounding land, the peak offers opportunities to view high cliffs, the Blue Ridge escarpment, the Sauratown Mountain range, Stoney Ridge, and Piedmont farmland, forest and development. The view from Little Pinnacle provides an exceptional perspective of Big Pinnacle nearby. By contrast, the River Section, offers views of a wide, slow-moving river with wooded riverbanks, shoals, and islands.



Scenic Overlook

Geological resources include nationally significant Pilot Mountain and the Yadkin River. Pilot Mountain is a quartzite monadnock with a mesa-like profile that rises 1,500 feet above the surrounding terrain. In 1974, a 775-acre tract within the park that encompasses the peak was designated as a *National Natural Landmark*. The Yadkin River is a channel that is typical of Piedmont rivers. However, the segment that borders the park is wider which provides an opportunity for long and short distance paddle access. The Ararat River is a wide tributary of the Yadkin River in the Pee Dee watershed.

The Mountain, Corridor, and River sections provide large tracks of open space and diverse land with significant opportunities for recreational resources. The varied topography and natural resources provide settings that accommodate a variety of day and overnight activities including: trail use along the *Mountains to Sea Trail*, camping, picnicking, bird watching, fishing, nature study, canoeing, rock climbing, rappelling, and interpretive signs. The road to the summit of Little Pinnacle provides an accessible opportunity for scenic views of scenery and natural features within and surrounding the park.



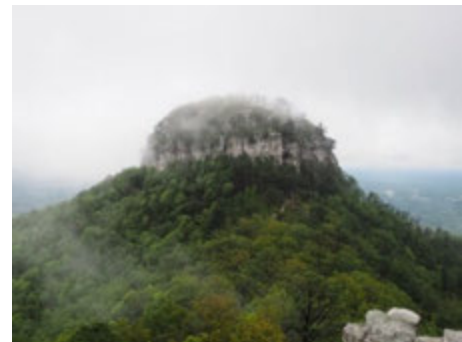
Rappelling

II. HISTORY

Like the rocky escarpments at Hanging Rock State Park nearby, Pilot Mountain is a remnant of an ancient high elevation 'peneplain', creating the *Sauratown Mountains*. This rugged mountain rock, or quartzite monadnock, has eroded surrounding peaks to a rolling plain used for agriculture.

Pilot Mountain is capped by two prominent pinnacles. Big Pinnacle: with walls of bare rock and a rounded top covered by vegetation, rises 1,400 feet above the valley floor, and the knob extends more than 200 feet from its base. Big Pinnacle is connected to Little Pinnacle. Visitors have access to the top of Little Pinnacle. The view shed expands across the Piedmont region; to the mountains of North Carolina and Virginia.

The earliest known inhabitants of the region were native Saura Indians, who had limited contact with immigrants arriving in the area in the 1750's. The Sauras were driven southward by the Cherokee Indians, who later occupied the area. Further settlement in the area was led by Moravians, but the population remained sparse during colonial times due to surrounding turmoil created by an alliance between the Cherokees and the British.



Little Pinnacle

"Pilot" or "Great Guide" was derived from the word "*Jomeokee*" which appears in written promotional materials about the mountain by a former private land owner. The Sauras left no written language, and "*Jomeokee*" has no meaning in any known variant of the Siouan language presumably spoken by the Saura.

Pilot Mountain became the 14th State Park in North Carolina in 1968, due to efforts of a group of local citizens. Prior to that time, the mountain was a private commercial tourist attraction. Pilot Mountain Preservation and Park Committee proposed the establishment of Pilot Mountain as a State Park unit for conservation, natural resources protection, and the surrounding area from future commercial development. Working with the conservation-minded owner of the property, Mrs. J.W. Beasley, the group secured options on the land and raised matching funds to purchase the land with federal grants. The committee acquired more than 1,000 acres of land along the Yadkin River that was added to the park in 1970. Pilot Mountain stands as a monument of a concerned citizen dedicated to preserving the exceptional natural resources of North Carolina.

Horne Creek Farm state historic site is adjacent to the Yadkin River section. The farm is an educational center dedicated to preserving rural heritage of North Carolina in the 1900's.



National Natural Landmark

National recognition was established in 1974 for Pilot Mountain when the Secretary of the U.S. Department of the Interior Designated Pilot Mountain a *National Natural Landmark*. The program, administered by the National Park Service, recognizes and encourages the conservation of outstanding examples of natural history, identifies and recognizes the best examples of biological and geological features in both public and private ownership. As of January 2008, only 13 sites in North Carolina and less than 600 sites nationwide have been granted this national designation.

Horne Creek Living Historical Farm

In September of 1987, the Department of Environment, Health and Natural Resources signed a memorandum of agreement with the Department of Cultural Resources to permit the establishment and management of Horne Creek Living Historical Farm State Historic Site. The Hauser Farm, located within the Surry County Yadkin River section, was acquired for Pilot Mountain State Park in 1970.

The farm is a place to interpret farm life and segregation in the northwestern Piedmont region around 1900. Historical structures include the Hauser farmhouse (1880), restored and furnished to the circa 1900-1910 era, well/ wash house, fruit house, smokehouse, double crib log feed barn, tobacco curing barn, corncrib, and reconstructed fruit and vegetable dry house.

Visitor Center includes exhibits, restrooms, a gift shop and offices. The site is working to raise animal breeds that were bred in the early 20th century, and includes an apple orchard with about 800 trees representing 400 heritage apple varieties.

Horne Creek nature trail trailhead is located at the picnic area. The cemetery includes descendants of both the Hauser and Sawyer family.



Visitor Center at Horne Creek Farm



Interpretive Farm Life



III. THEMES AND INVENTORY

The significant archeological, geologic, scenic, recreational and biological resources of North Carolina should be represented in the State Park system. These resources, as cited in the State Parks Act, are divided into sub-categories called resource “themes”. There have been 108 themes identified that should be protected to preserve representative examples of unique resources. For this GMP only themes that are of high significance to *Pilot Mountain State Park* are shown.

Table 1 - Theme Table

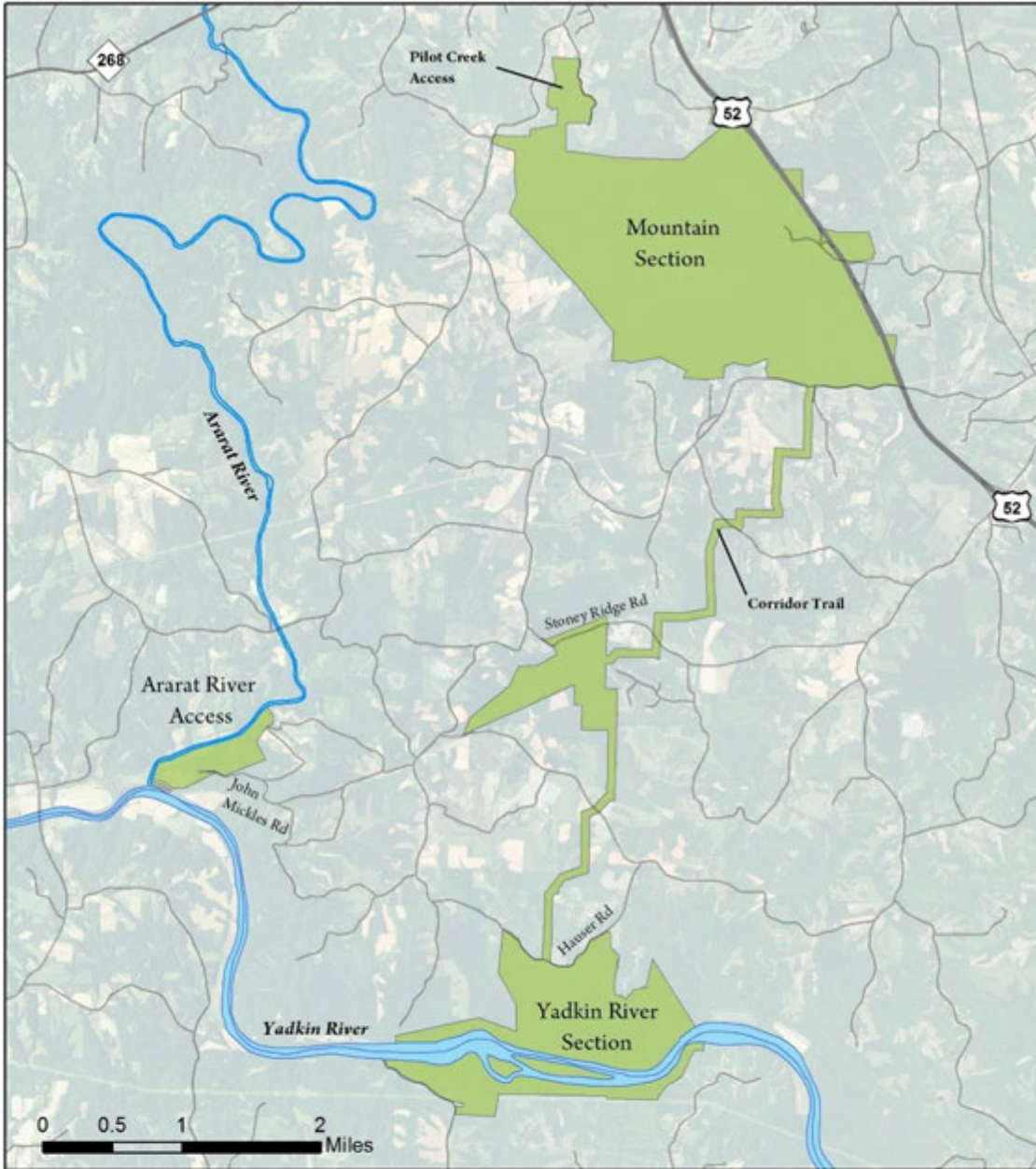
Theme Type	Theme	Pilot Mountain Significance	State Parks System Representation
Archeological/Historic	Cemetery	High	Adequate
Archeological/Historic	Commercial	High	Moderate
Archeological/Historic	Recreation	High	Adequate
Archeological/Historic	Rural-Domestic	High	Adequate
Archeological/Prehistoric	Burial/Cemetery	High	Moderate
Archeological/Prehistoric	Campsite/Activity Area	High	Adequate
Archeological/Prehistoric	Quarry-Other	High	Adequate
Archeological/Prehistoric	Rock Art	High	Moderate
Archeological/Prehistoric	Shelter/Cave	High	Adequate
Archeological/Prehistoric	Trail/Path	High	Adequate
Archeological/Prehistoric	Village	High	Moderate
Archeological/Standing Structure	Rural-Domestic	High	Adequate
Biological	Low Elevation Cliffs and Rock Outcrops	High	Moderate
Biological	Piedmont and Coastal Plain Mesic Forests	High	Adequate
Biological	Piedmont and Coastal Plain Oak Forests	High	Adequate
Biological	Piedmont and Mountain Floodplains	High	Moderate
Biological	Piedmont and Mtn. Dry Coniferous Forests	Moderate	Moderate
Geological	Cliffs	High	Adequate
Geological	Exfoliation Outcrops	High	Adequate
Geological	Faults, Joints, and Related Features	High	Adequate
Geological	Inselbergs (Monadnocks)	High	Adequate
Geological	Mass Wasting Features	High	Adequate
Geological	Metamorphic Features	High	Adequate



Geological	Sedimentary Features	High	Moderate
Scenic	Caves/Cliffs	High	Little
Scenic	Forests	High	Moderate
Scenic	Meadows/Grasslands	High	Little
Scenic	Rivers	High	Little
Scenic	Rock Outcrops	Moderate	High
Scenic	Scenic Highways	High	Little
Scenic	Scenic Vistas	High	Moderate
Scenic	White Water Streams	High	Moderate

*See the System Wide Plan for references to Theme and Inventory terms. Themes have both actual and “potential” future needs to be at a park.

CONTEXT MAP



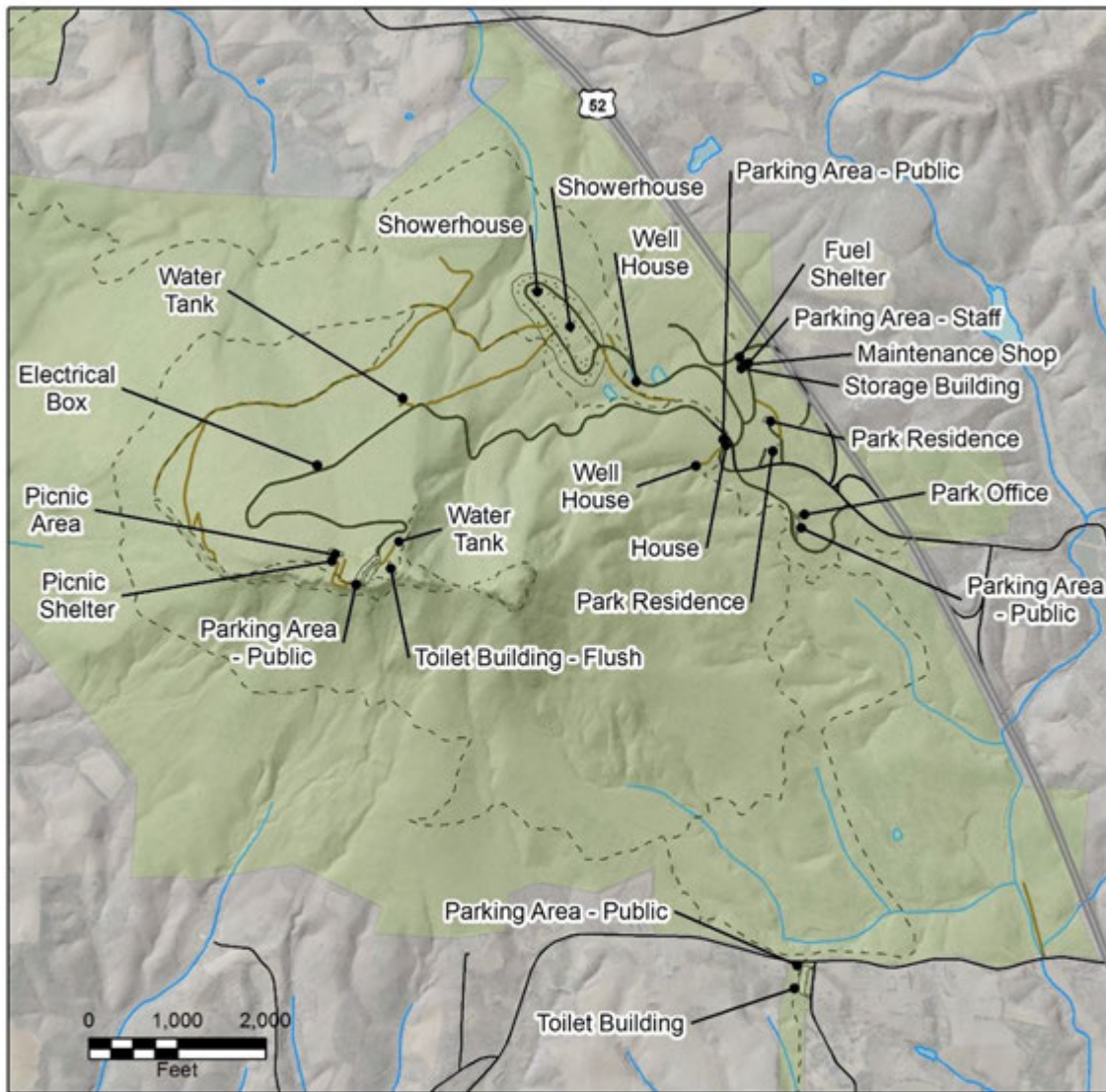
Pilot Mountain
State Park
Context Map
Mountains Region
June 2018

 State Parks Unit





FACILITY INVENTORY - MOUNTAIN SECTION



Pilot Mountain
State Park
Facility Inventory
Mountain Section
June 2018

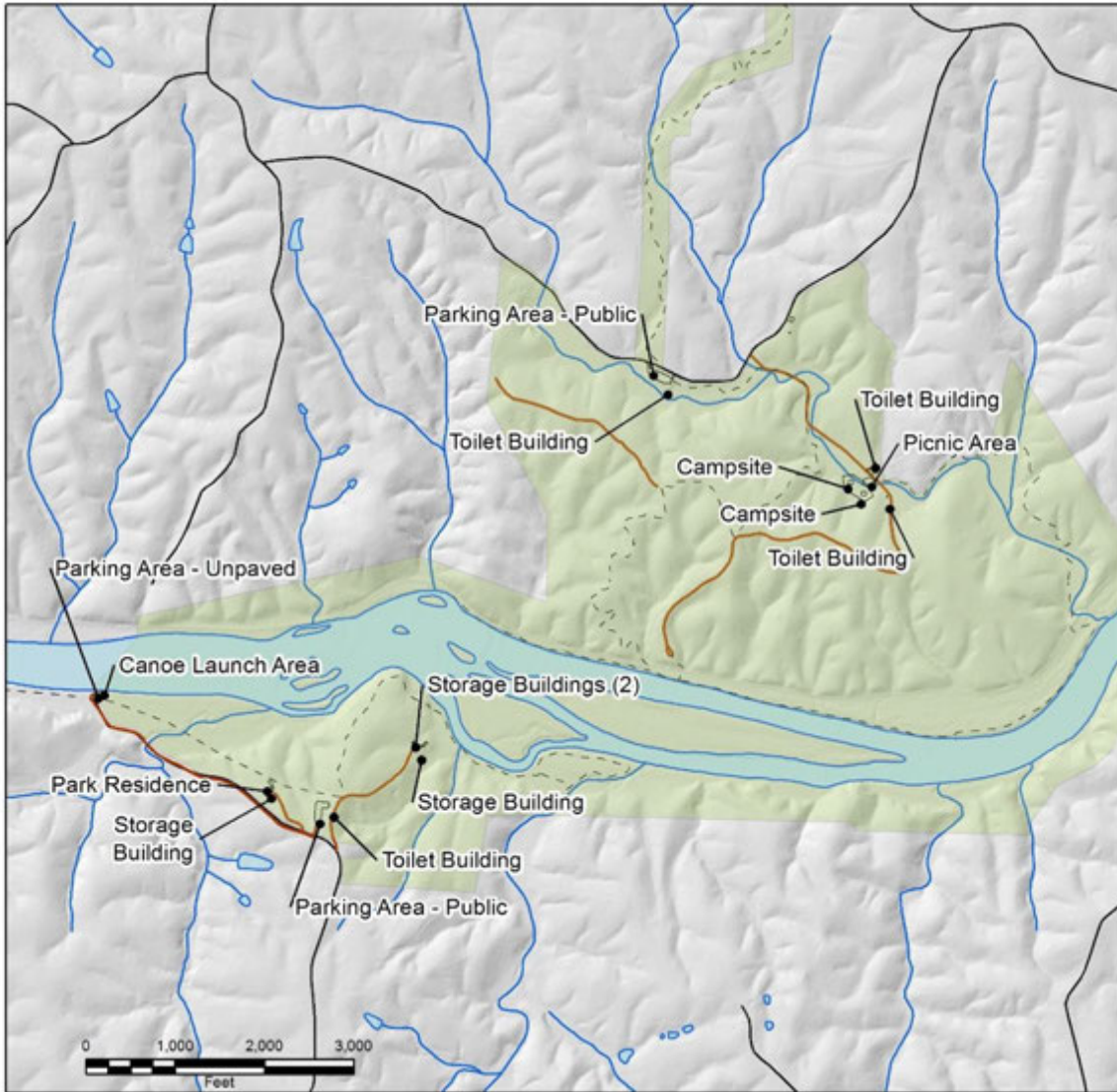


Legend

- State Parks Unit
- Trails
- Facilities
- Road - Paved
- Road - Unpaved



FACILITIES INVENTORY – RIVER SECTION



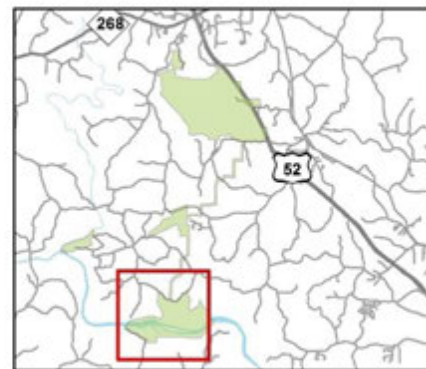
Pilot Mountain
State Park
Facility Inventory

River Section
June 2018



Legend

- State Parks Unit
- Trails
- Facilities
- Road - Paved
- Road - Unpaved





TRAIL INVENTORY

Trail Inventory	Hiking	Equestrian	Paddle
Bean Shoals Canal Trail	0.5		
Corridor Trail	6.6	6.6	
Grassy Ridge Trail	1.7	1.7	
Grindstone Trail	3.0		
Horne Creek Trail	2.5		
Ivy Bluff Trail	1.3		
Jomeokee Trail	0.8		
Ledge Spring Trail	1.6		
Little Pinnacle Overlook Trail	0.1		
Mountain Trail	4.5		
Pilot Creek Trail	3.3		
TRACK Trail	0.3		
Yadkin Island Trail	1.5	1.5	
Yadkin River			0.20
Pilot Mountain SP Totals (miles)	27.70	9.80	0.20

Mountains to Sea State Trail (MST): 11.4 miles of the Mountains to Sea State Trail is in the park. It is co-located on portions of the Corridor (6.6 miles), Mountain (3.3 miles), Grindstone (1 mile) and Grassy Ridge (0.5 mile) trails. The MST enters the park on the southern end of the Corridor Trail to the west and connects with the privately-owned Sauratown Trail to the east.

TRAILS:

Bean Shoals Canal Trail: Yadkin Section. This 0.5 mile trail is located on the north side of the Yadkin River that begins at the turnaround parking area. The trail continues along a railroad trestle, along the ruins of the unfinished Bean Shoals Canal.

Corridor Trail: This 6.6 mile, hiking and bridle trail meanders through pine and hardwood forests connecting the Mountain and Yadkin River sections. It continues the Yadkin Islands Trail, which continues to the River Parking Lot. The historical Cundiff cabin is located off the Corridor Trail.



Bean Shoals Canal Trail

Grassy Ridge Trail: Mountain section. This 1.7 mile trail begins across from the park office. It continues through lowland pine and hardwood forests crossing streams with seasonal wildflowers. The *Sauratown Trail* crosses over Highway 52 and continues several miles along private easements.



Grassy Ridge Trail

Grindstone Trail: Mountain Section. Grindstone Trail is a 3 mile, one-way trail that leads to the summit. Trailhead parking is found near the park office. Trail continues uphill to a rock building where hikers cross the main park road and hike out past the campground. The trail parallels with the Ledge Spring Trail along the last 0.25 mile. The trail continues past picnic area to the first junction of the summit area.



Grindstone Trail

Horne Creek Trail: Yadkin River Section. This 2.5 mile hiking trail begins at the Bean Shoals Access picnic area, continues along Horne Creek, and intersects with the Bean Shoals Canal Trail along the shoreline of the Yadkin River.

Ivy Bluff Trail: Yadkin River Section. This 1.3 mile hiking trail is located along the south section of the Yadkin River. Trailhead parking is located at the Ivy Bluff Access parking lot along Shoals Road. A canoe-in campsite is located off the trail.



Jomeokee Trail

Jomeokee Trail: Mountain Section. This 0.8 mile trail begins at the upper side of summit trailhead parking area behind the restroom building. It is a moderate trail, with rock steps which crosses the gap to the Big Pinnacle. The trail corridor makes a loop around the base and continues into the same trail, to return across the gap.

Ledge Spring Trail: Mountain Section. The trailhead is located below Little Pinnacle along the Jomeokee Trail. Ledge Springs Trail is a 1.6 mile challenging walk with rocks, rock climbing stations, and varying slope. The trail continues along the foot of the cliffs with spectacular view and ledges to the west of the Little Pinnacle.



Ledge Spring Trail



Little Pinnacle Overlook Trail: Mountain Section. The trailhead is located on the Upper side of summit parking Area (behind Restroom Building). A moderate, 0.1 mile trail to the Little Pinnacle bluff offers a scenic view of the Big Pinnacle, *Sauratown Mountain* and Hanging Rock State Park to the east. Hikers can view 3,000 square miles from this vista.



Little Pinnacle Overlook Trail

Mountain Trail: Mountain Section. Trailhead connects to Grindstone Trail. This trail continues southeast, down the mountain with different vegetation as the elevation changes. It ends at the beginning of the Corridor Trail. It connects to the Grindstone Trail to complete a 4.5 mile loop trail.

Pilot Creek Trail: Mountain Section. This is a newly constructed 3.3 mile strenuous trail which starts at Boyd Nelson Road. Pilot Creek Trail continues to the junction of Grindstone Trail. A future greenway corridor goes north along Boyd Nelson Road to *Town of Pilot Mountain* managed trail system



Mountain Trail

TRACK Trail: Mountain Section. The trailhead is located at the upper side of summit parking area behind restroom building. This 0.3 mile trail offers scenic views of the Pilot Mountain pinnacle and vistas of the surrounding mountains, while leading hikers through a fire-based forest ecosystem.

Yadkin Island Trail: Yadkin River Section. This 1.5 mile trailhead is located along Hauser Road.

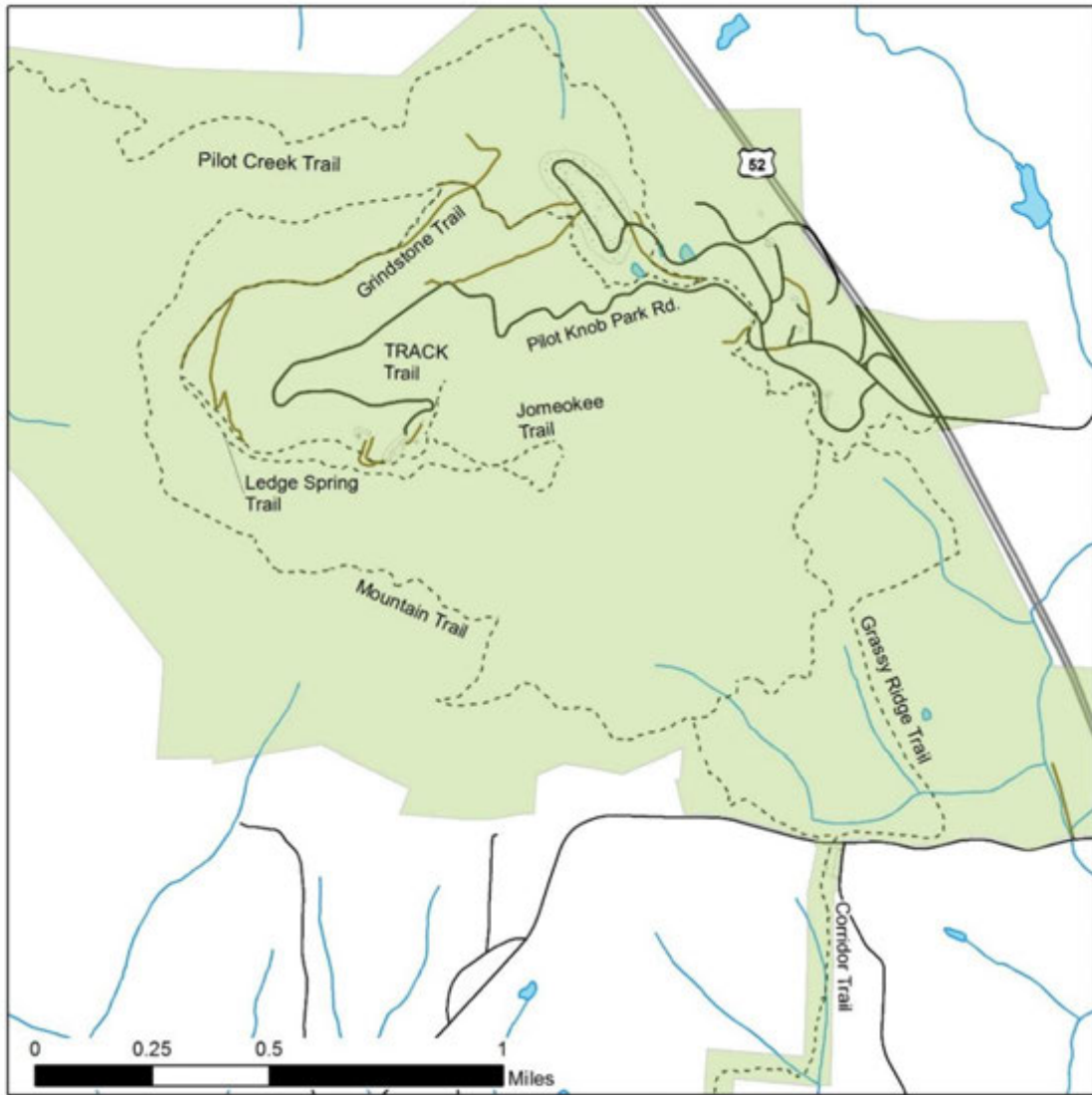
PADDLE TRAIL:

Pilot Mountain State Park manages 0.2 river miles and one paddle put-in access area at Ivy Bluff access area. Yadkin River section can provide both short and long distance paddle trails.



A park ranger led hike

TRAIL INVENTORY - MOUNTAIN SECTION



Pilot Mountain State Park Trail Inventory
 Mountain Section
 June 2018

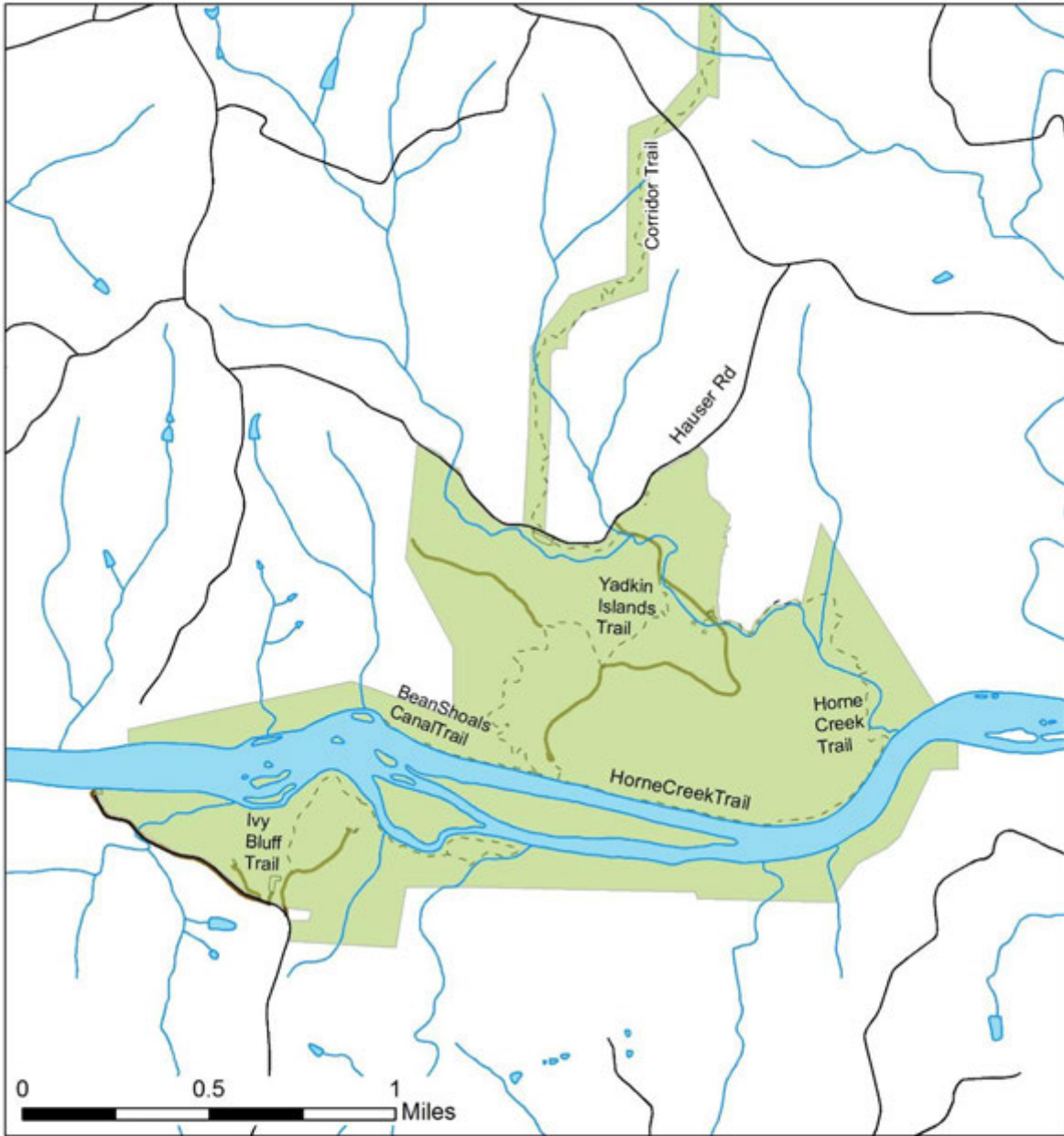


- State Parks Unit
- Existing Trails
- Existing Facilities
- Road - Paved
- Road - Unpaved





TRAIL INVENTORY - RIVER SECTION



Pilot Mountain State Park Trail Inventory

River Section
June 2018



- State Parks Unit
- Existing Trails
- Existing Facilities
- Road - Paved
- Road - Unpaved



IV. PLANNING



Pilot Mountain State Park



Pilot Creek- stream buffer protection



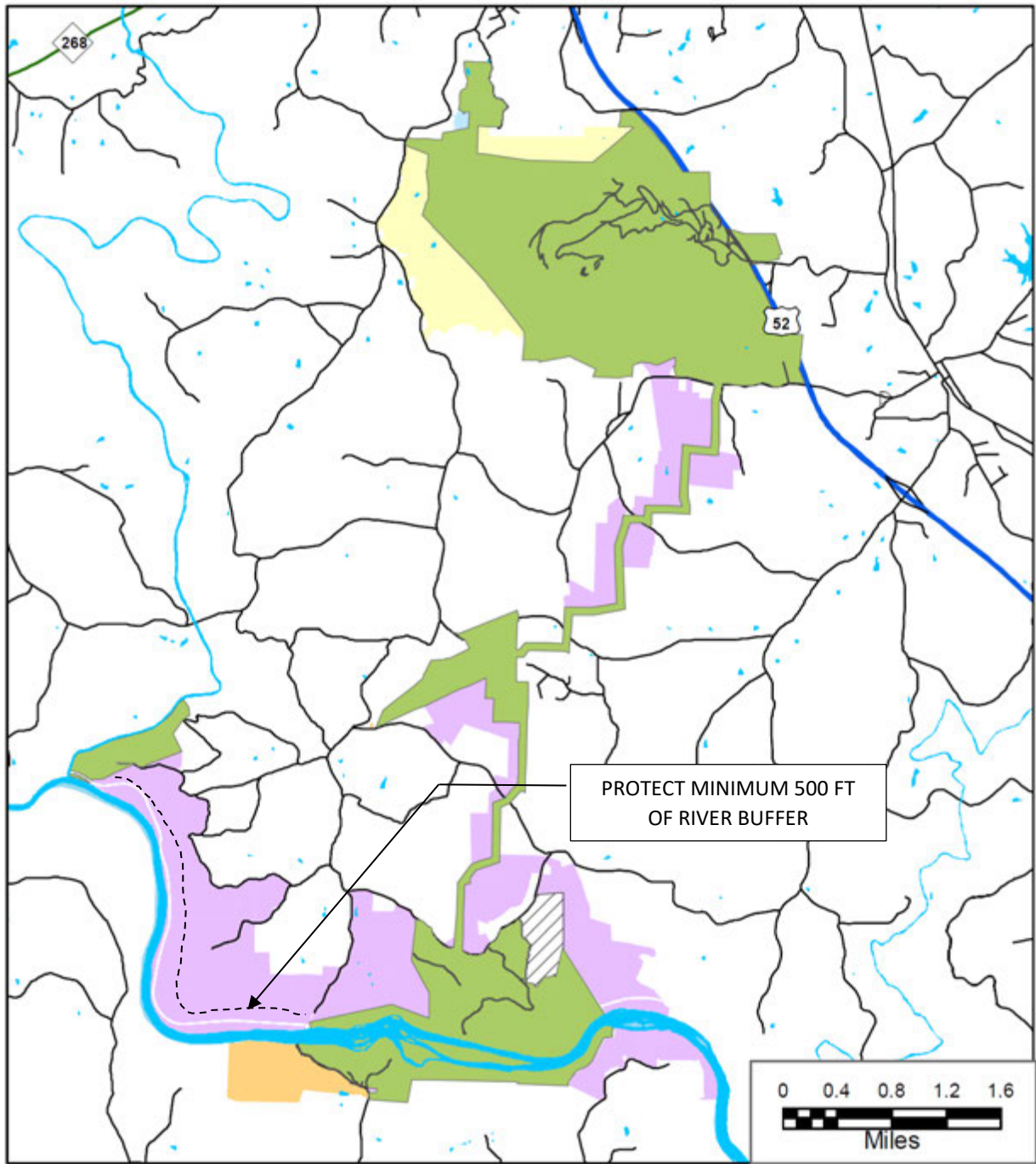
Railroad Crossing over Ararat River



LAND ACQUISITION FOR STATE PARKS

To achieve the highest level of connectivity between park properties already owned by the State of North Carolina, further acquisition of land is expected to take place. Additional land will ensure the maximum protection of natural resources, scenic preservation, outdoor recreation and public access. Each park has several tracts of land that have been distinguished as a future need or a critical need for the park. The following map shows Land Acquisition needs for *Pilot Mountain State Park*.

LAND PROTECTION PLAN



Pilot Mountain SP



November 2017

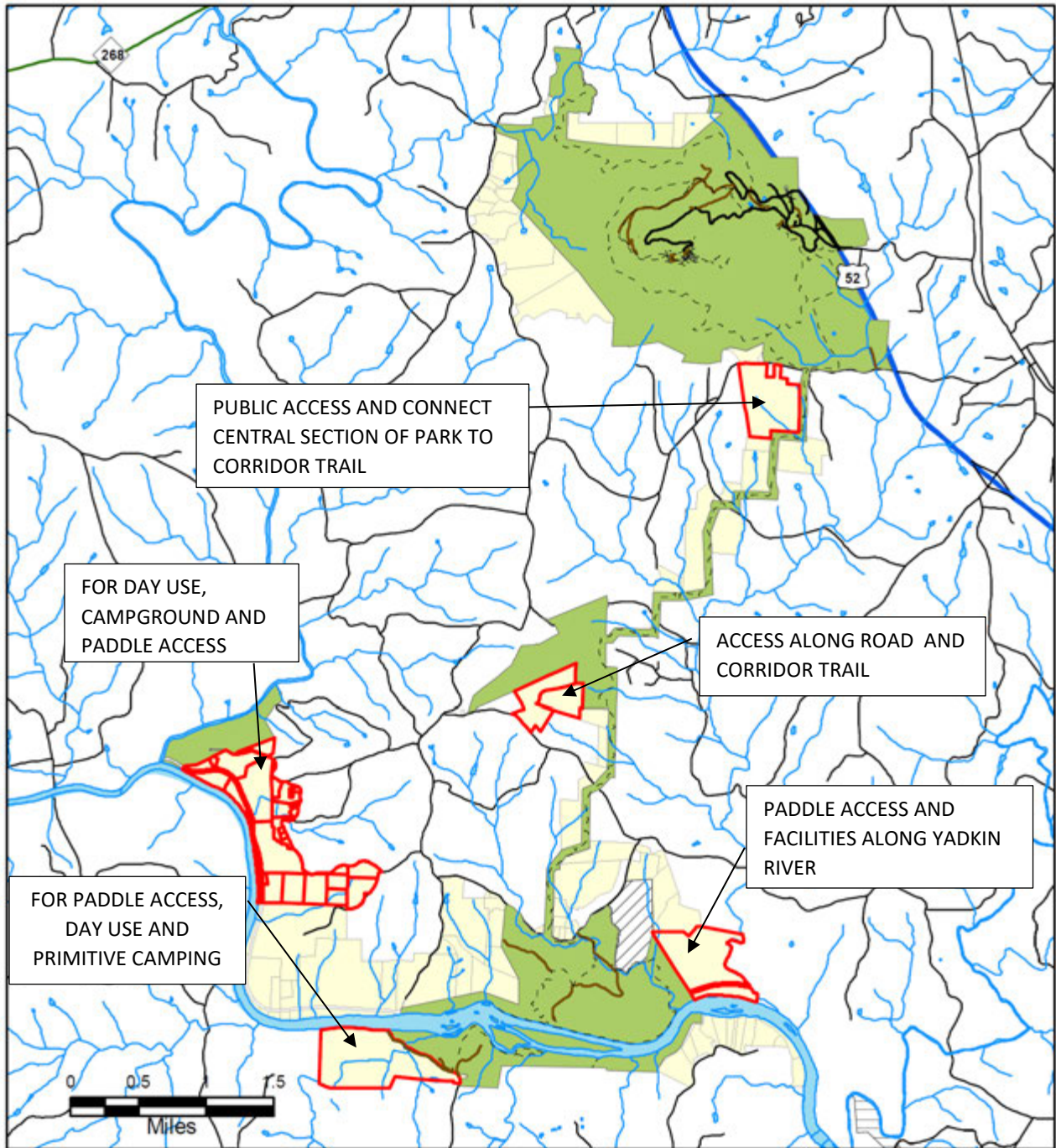
- Land Protection Plan**
- State Parks Unit
 - Primary resource protection
 - Inholding
 - Scenic protection
 - Water quality protection
 - Facilities development
 - Buffer

- Other Conservation Land**
- Federal
 - State
 - Other





LAND PROTECTION PLAN - CRITICAL ACRES



Pilot Mountain State Park

- Land Protection Plan**
- Critical need
 - State Parks Unit
 - Future Need

Other Conservation Land

- Federal
- State
- Other



November 2017

PROJECT LIST

Project #	Project Title	Probable Cost
1	Maintenance Area Improvements	\$745,290
2	Summit Overlook	\$150,000
3	Yadkin River Section: Northside Development	\$814,740
4	L - Yadkin River Access Day Use Improvements	\$ 439,090
5	Trail Renovations in Mountain Section	\$ 362,590
6	Shuttle bus shelter	\$19,345
7	Pilot Creek Trailhead	\$ 232,420
8	Parking Lot Improvements	\$45,000
9	Renovation of existing park office	\$339,220
10	Grassy Creek Campground Improvements	\$2,500,000
11	Ivy Bluff Access Improvements	\$449,570
12	Convert existing Campground to Day Use	\$77,550
13	Ararat River Day Use and Camping Improvements	\$ 381,240
14	L-Southside Yadkin River Section Development	\$519,210
15	L-Corridor Trail Renovations	\$352,640
16	L-Cundiff Cabin Stabilization	\$570,350
TOTAL		\$7,998,255

*** Planning estimated project cost does not include contingencies, design fee, nor escalation*

1. Maintenance Area Improvements

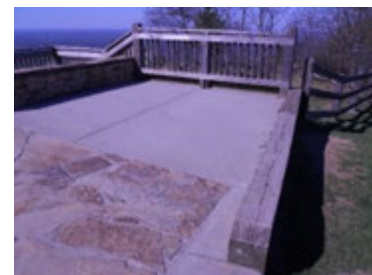
Proposed improvements to the existing maintenance area include: repaving the maintenance area access road, rough grading and install gravel for storage area, chain-link security fencing. Construction of a six-bay pole barn, 1,800 SF warehouse with a vehicle lift, and a flammable-storage building are also a part of the project.



Existing Maintenance Storage Building

2. Summit Overlook

Existing over look structure located at the summit, will be demolished, re-graded for accessible design standards. New railings and concrete paving will be installed to provide a gathering/event space or outdoor classroom.



Existing Overlook



3. **Yadkin River Section: Northside Development**

The Yadkin River section will provide a passive recreational experience with primitive camping and trails. This is a stark contrast to the weekend experience at the summit. A proposed 22' wide, gravel park road to north side of the Yadkin River will meet at the junction intersection. This access area will provide vault toilet, and trail improvements connect to the the *Mountains to Sea Trail*. A portion of the existing road that crosses over 3 streams will be abandoned, and only used for emergency and park staff access.



Bean Shoals Access

A mini maintenance area will be installed along Hauser Road along with a future ranger residence.

The Mountains to Sea Trail corridor is proposed to be re-routed on the north side of the Yadkin River, continue along the corridor trail north to Mountain trail, then connect to the Sauratown trail system.

4. **L- Yadkin River Access Day Use Improvements**

This land dependent property will provide paddle access opportunities along the Yadkin River corridor. In Phase 1, parks staff will need to obtain a 50' railroad crossing for a public access easement prior to construction and planning, along with warning systems per NCDOT requirements. In Phase 2, scope of work includes: gravel road improvements, day use facilities with 10 scattered picnic tables, park gate, 50 parking spaces with over flow, vault toilet, trails, and canoe access for paddle users and their families. Yadkin River is a wide Piedmont river corridor and has a gentle moving rapids/river flow which is ideal for beginner paddle trails and families.



Land is needed for paddle Access facilities and Yadkin River resource protection

5. Trail Renovations in Mountain Section

Scope of work includes: 275 linear feet of wood safety fencing, removal of wooden stair cases near upper parking lot and replace with 3 sets of wooden staircases, three (3) miles of Grindstone Trail improvements will be undertaken and constructed to meet standard sustainable practices. Timber steps along Ledge Spring Trail will be removed and replaced with 5’ wide steps, two (2) miles of Ledge Spring trails will be improved over steep terrain. Feasible reroutes will be investigated.

6. Shuttle bus shelter

The park transportation system will gradually convert into a park and ride / shuttle bus system. Bus shelters need to be added at the old park office, former campground and other key locations within the mountain region. Scope of work includes: 160 Sq. Ft bus shelter, benches, sidewalk and lighting. This will help to alleviate the traffic congestion along US- 52 and help preserve the natural resources within the park.



Proposed Shuttle bus shelter

7. Pilot Creek Trailhead

The summit currently provides the primary day-use area for the mountain section. Concentrated use that occurs on this small area stresses the natural resources and facilities. This alternate satellite park will provide opportunities for recreational access to the park.

Scope of work includes: vault toilet and paved trailhead parking lot for 60 cars, to bury and/or remove electrical poles and lines (managed by the local electric company). A future greenway will connect to the Town of Pilot Mountain on the north side.



View of Pilot Mountain Pinnacle from location of Pilot Creek Trailhead



8. Parking Lot Improvements

Staff will coordinate with NCDOT to repair and recoat existing asphalt paving due to extensive age and use.

9. Renovation of existing park office

The visitor center will be constructed south of the existing park office area. The 2187 sq. ft. park office was built around 1981 and needs interior renovation to provide rentable facility for vendors such as rock climbing groups and/or storage in basement for park staff. Restrooms will open to public after Visitor Center is completed. This area has a small trailhead parking lot with limited restrooms that are not accessible.



Park office



Limited Parking at the existing park office

10. Grassy Creek Campground Improvements

Additional RV camping is needed central located to the mountain area for operations and emergency response time. This project would help alleviate the summit area and provide upgraded facilities away from US-52. Scope of work includes: Grading, storm drainage, erosion control measures, 25' wide access road, Pre fabricated metal Bridge, 20 RV campsites, 5 camper cabins, shower house with septic field, water, and electrical extensions.

11. Ivy Bluff Access Improvements

The Ivy Bluff Access located off Shoals Road is a “satellite park” located on the south side of the Yadkin River. The scope of work includes: main entrance signage, additional three (3) paddle-in campsites, 150 lin. ft. pre-fab metal pedestrian bridge, utility and infrastructure extensions, and trail connections.



Existing Ivy Bluffs Parking Lot

12. Convert existing Campground to Day Use

This project was created to further resolve the parking issues that occur at Pilot Mountain. The project will gradually convert the existing camping area to a day use area with adequate parking spaces based on topography constraints. A new traffic circle will be constructed and the campground will be abandoned and relocated to a satellite location that will have similar size and number of campsites. This is a long-term project that will be examined after the completion of the Visitor Center and evaluate additional parking capacity and shuttle bus system. A nature playground will be assessed as an alternate location for educational programs and circulation patterns of the shuttle bus system for interpretation and education.



Ararat River Access

13. Ararat River Day Use and Camping Improvements

Scope of work includes: primitive campground with 9 campsites for *Mountains to Sea trail* users and campers, 20’ wide gravel access road, and vault toilet.



14. L- Southside Yadkin River Section Development

This long term, land dependent, and satellite park area planning project will provide recreational and facility improvements along the Yadkin River section and Ararat River.

Scope of work includes: Group camping area with two (2) group camps, single vault toilet, Primitive campsite on the northside with six (6) campsites, double vault toilet, platform steps, adequate parking spaces. Trail improvements include: trail connector loop system. Day Use improvements include: one way gravel access road, picnic tables, and parking lot with 20 spaces.

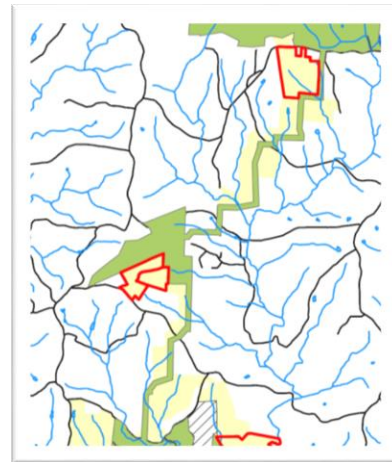


Existing Yadkin River Paddle at Ivy Bluff Access

The 130 acre property at the confluence of the Ararat and Yadkin Rivers is an opportunity for paddle trail access on both rivers. Surry County is working to provide paddle access sites upstream along the Ararat River. This parcel is about four (4) river miles upstream of the Yadkin River access site and is ideal paddle-in camping, loop trail connection, and day use facilities.

15. L-Corridor Trail Renovations

The 6.60 mile corridor trail that connects the mountain access and river access of the park needs renovations to prevent further deterioration of natural resources, to maintain safe equestrian trails, and to use sustainable construction practices. Scope of work includes: grading, storm drainage improvements, installation of (2) single vault toilets near trailhead parking, 6 miles of trail improvements along the Corridor Trail, and parking lot with 10 spaces off Pinnacle Hotel Road for horse trailers at the north end of the trail, along the Surry County Line.



Critical Acres needed for trail access in Corridor Trail area

Until this project is funded, major maintenance trail funds should continue to be used to address these renovation improvements. There is a need for expansion of land buffer protection to create a maintainable trail in a rocky and steep terrain environment.

16. L-Cundiff Cabin Stabilization

The Cundiff Cabin has local historical significance, dating back to the 1850's. This is a stabilization project with State of North Carolina Cultural Resources. The former slave church, Old AME Zion, is located on a one-acre lot. The structure represents a rare and unusual example of pre-1900 domestic brick construction in rural Surry County.

This project would provide legal/managed access along the one mile long access road to the Cundiff Cabin, and provide general renovations to the cabin with maintenance funding.

The Cundiff Cabin is located on Stony Ridge area in Surry County, near the midpoint of the corridor trail which connects Pilot Mountain Section to the Yadkin River Section. The current access road is located on a 95-acre private property tract and the renovation and restoration work cannot take place until a managed access agreement is submitted.

The Cundiffs, a former slave family, purchased 60 acres of Stony Ridge region, raised nine children in the small three-room cabin, and farmed corn and tobacco. The facility could provide an opportunity for African American historical interpretation of a freed slave family, a historical experience that is lacking in State Parks Division. The cemetery at Horne Creek Living Historical Farm includes descendants of both the Hauser and Sawyer families in a segregated era. The Stony Ridge area was one of the few areas available for freed families like the Cundiff family to purchase land. Staff proposes to install a split rail fence for safety purposes and an interpretive sign to close off cabin due to major structural issues.

Staff will coordinate and partner with Cultural Resources to complete this project.



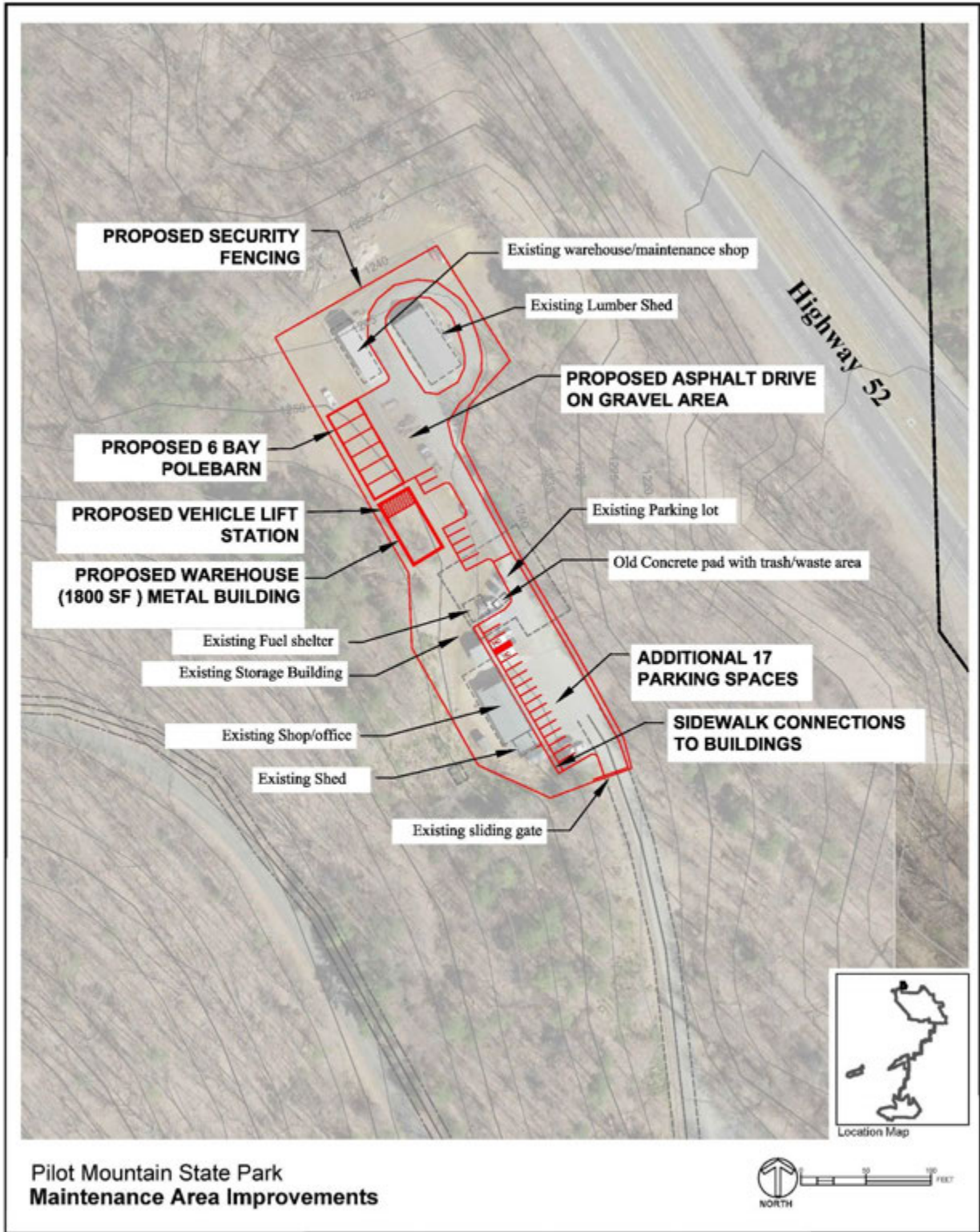
Doorway of Cudduff cabin is narrow and short



Cundiff Cabin

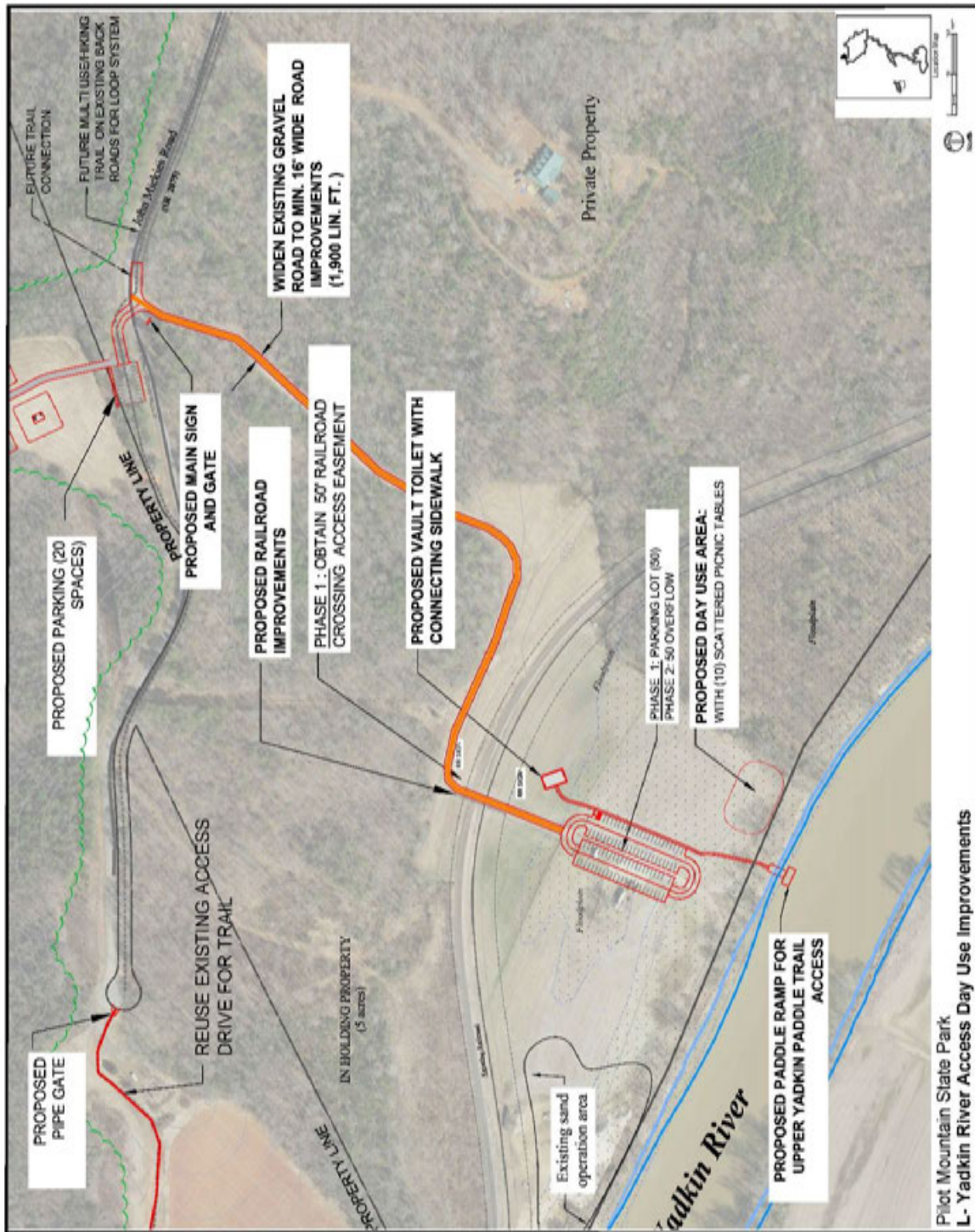


PROJECT #1: MAINTENANCE AREA IMPROVEMENTS

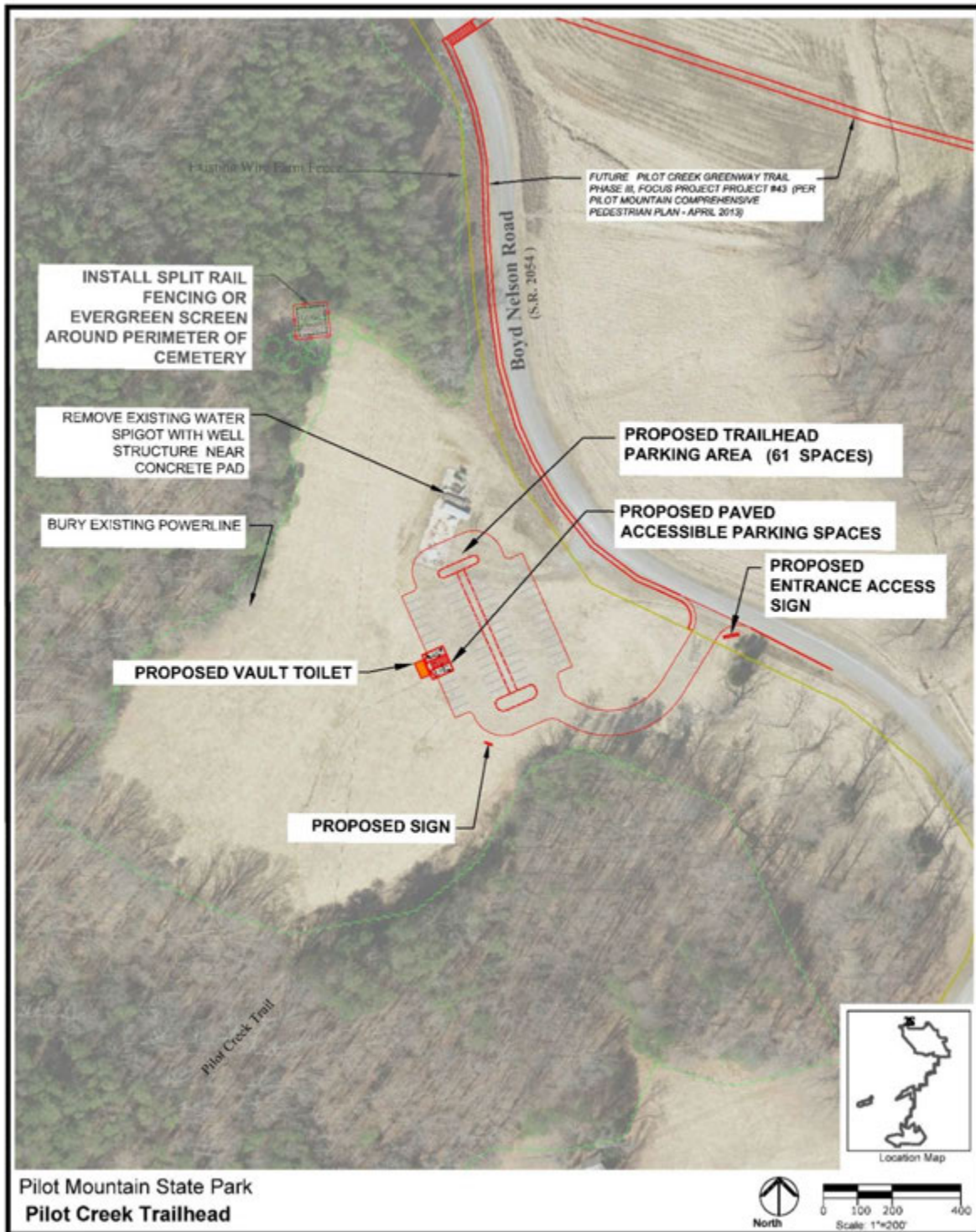




PROJECT #4: L- YADKIN RIVER ACCESS DAY USE IMPROVEMENTS

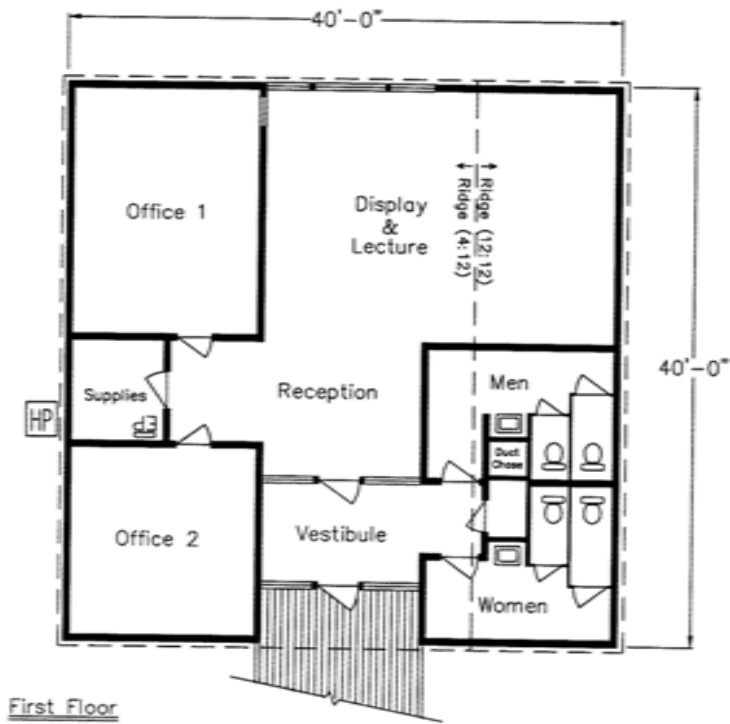


PROJECT #7: PILOT CREEK TRAILHEAD

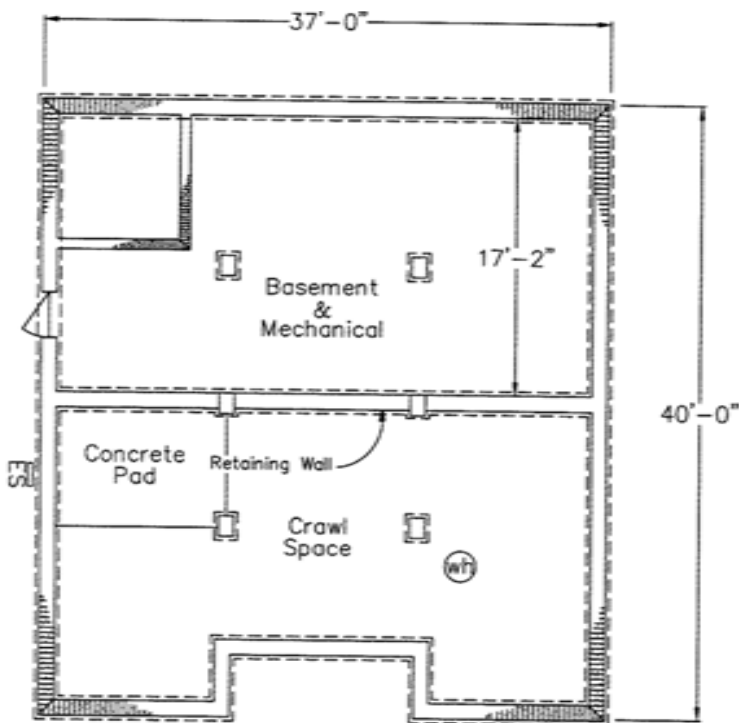




PROJECT #9: RENOVATION OF EXISTING PARK OFFICE

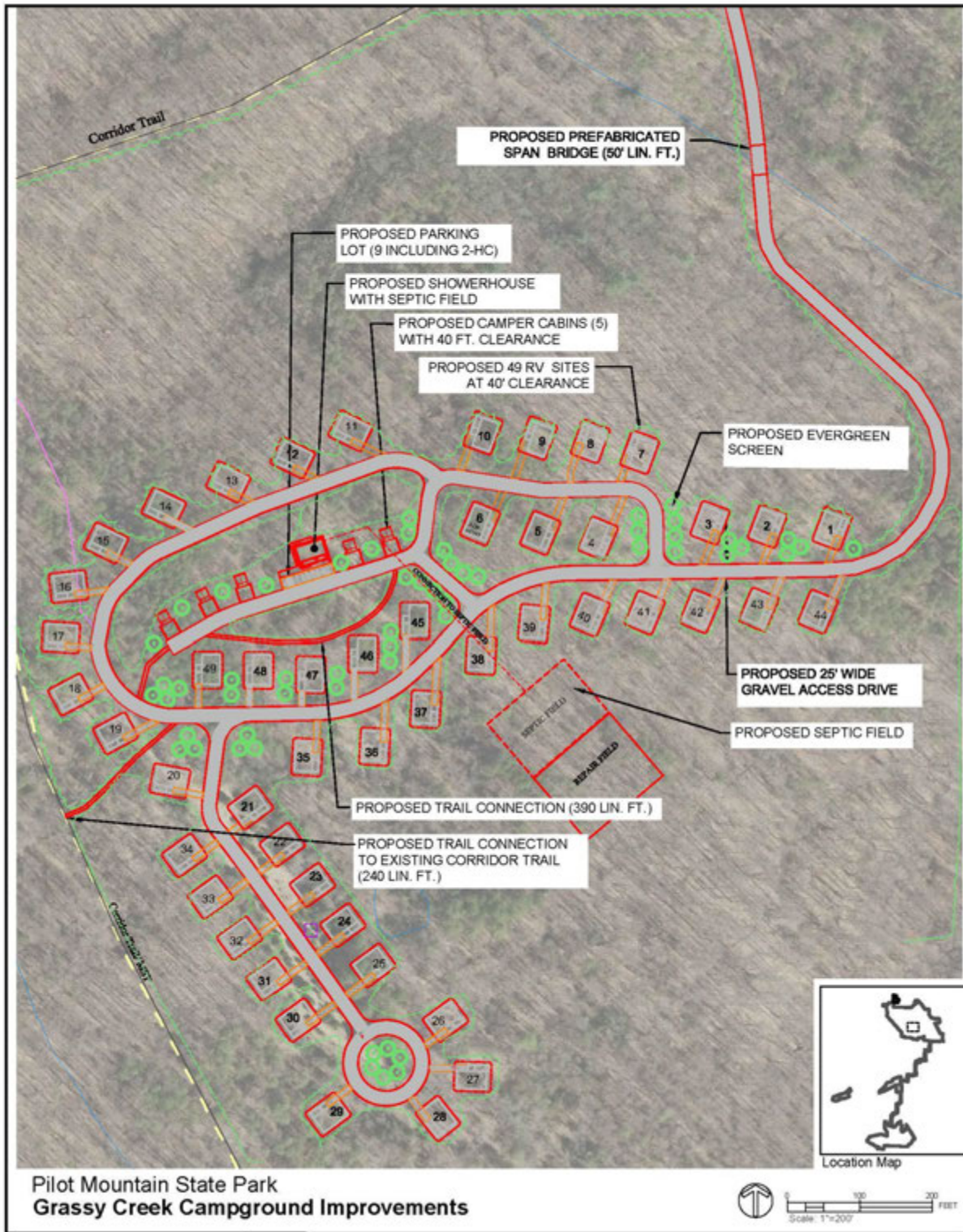


First Floor



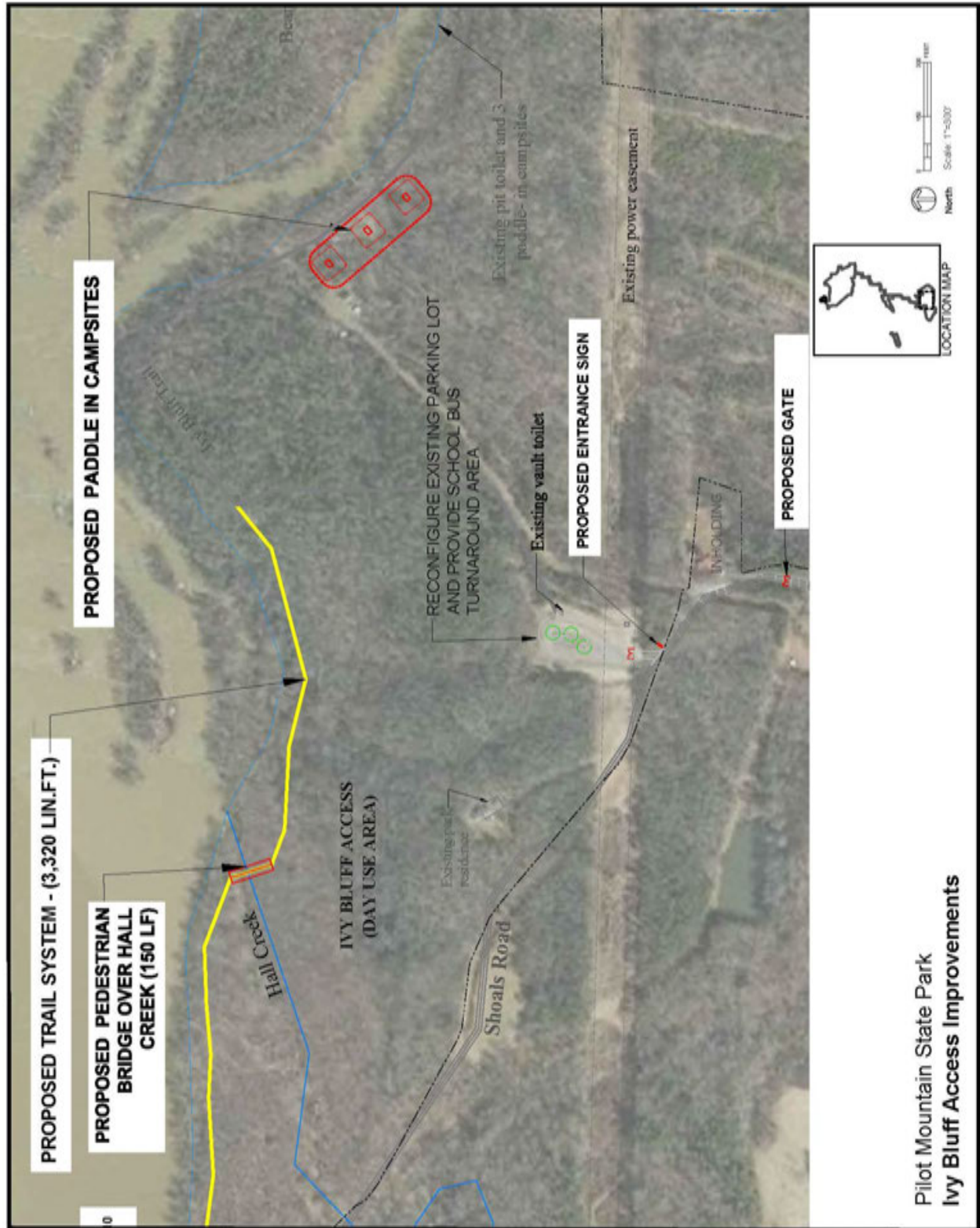
Basement & Foundation Plan

PROJECT #10: GRASSY CREEK CAMPGROUND IMPROVEMENTS



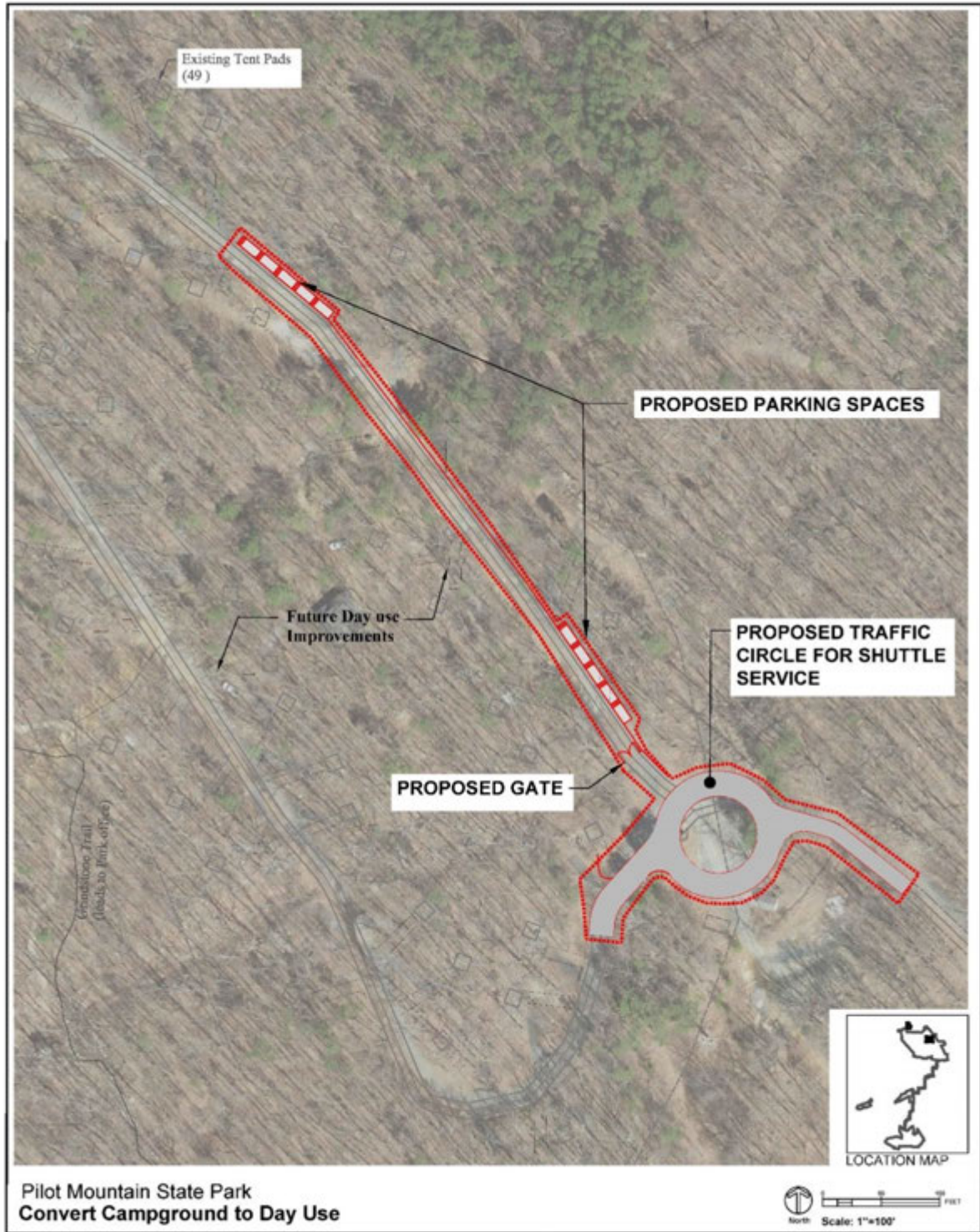


PROJECT #11: IVY BLUFF ACCESS IMPROVEMENTS



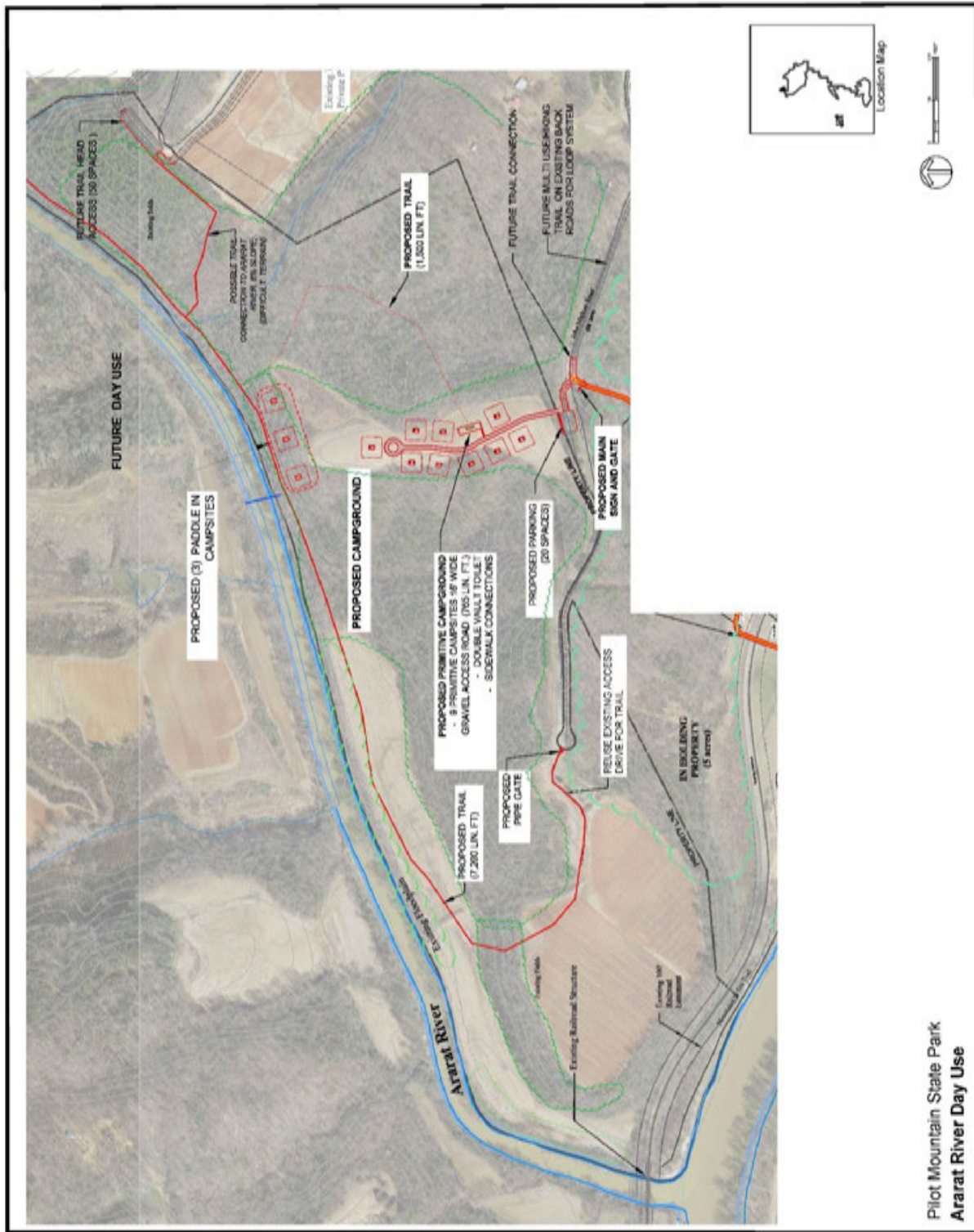
Pilot Mountain State Park
Ivy Bluff Access Improvements

PROJECT #12: CONVERT EXISTING CAMPGROUND TO DAY USE



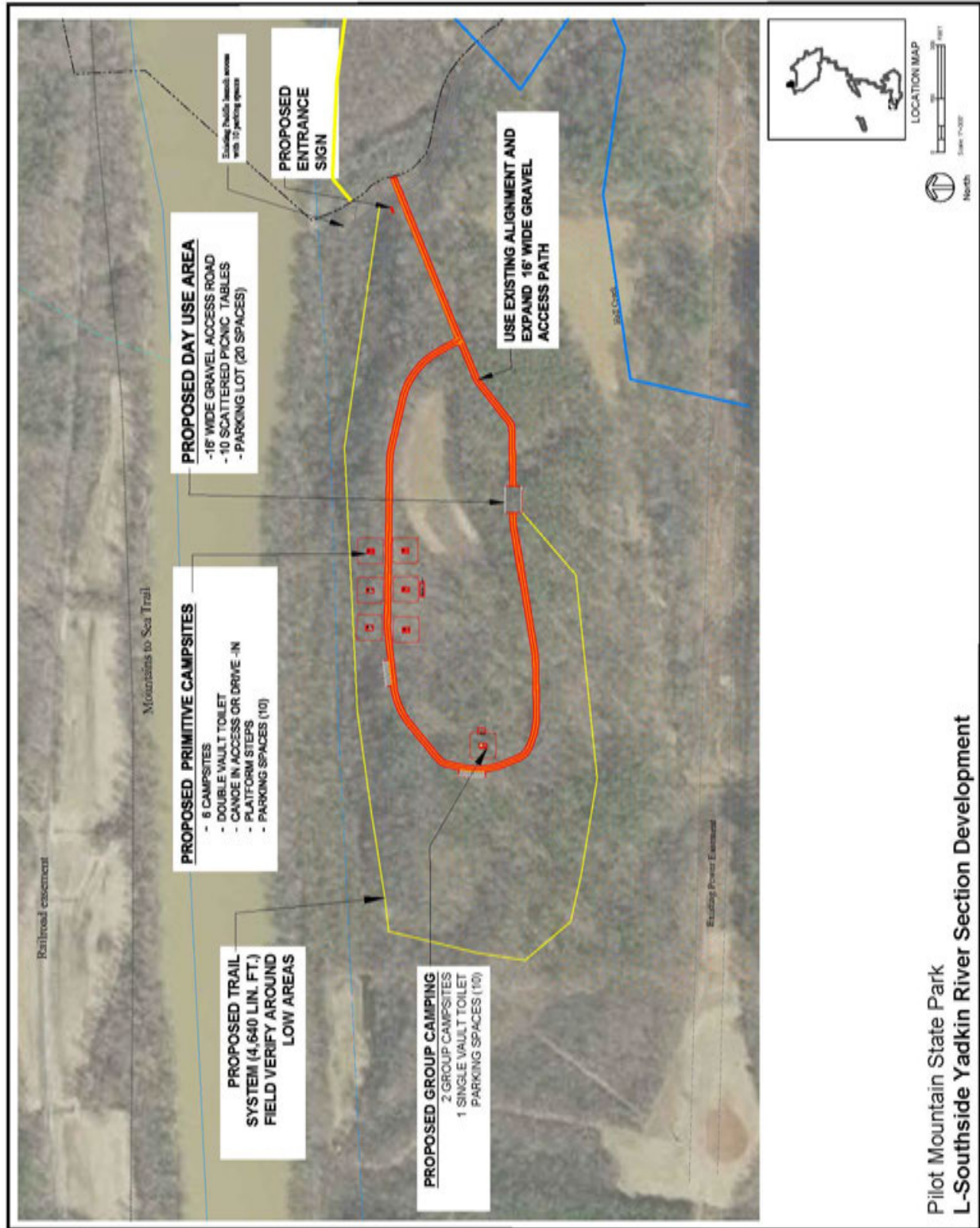


PROJECT #13: ARARAT RIVER DAY USE AND CAMPING IMPROVEMENTS



Pilot Mountain State Park
Ararat River Day Use

PROJECT #14: L- SOUTHSIDE YADKIN RIVER SECTION DEVELOPMENT





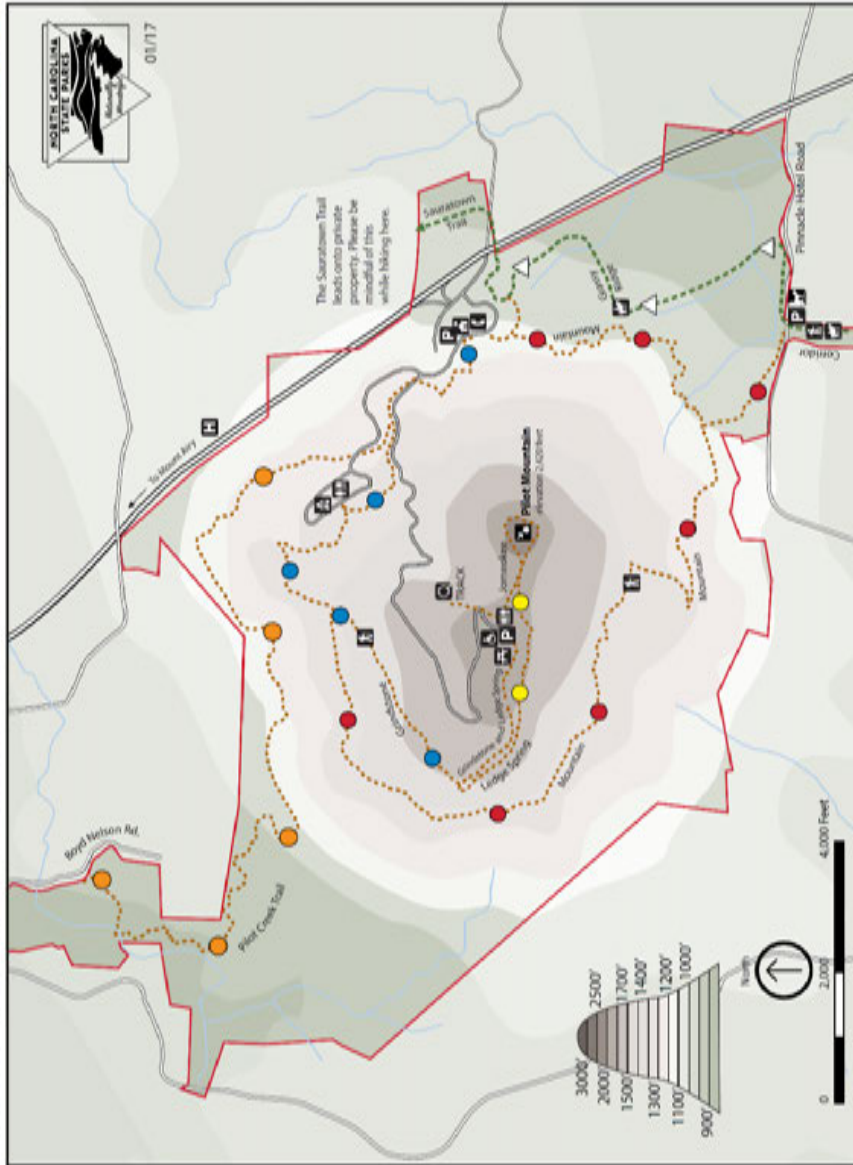
PARK MAP- MOUNTAIN SECTION

Pilot Mountain State Park



To Pilot Creek trailhead: continue north on US 52 1 exit to the town of Pilot Mountain exit. Turn left off the ramp. Turn west on HWY 268 for 0.2 miles, then south on Shoals Rd. After 0.5 miles turn left on Boyd Nelson Rd to reach the trailhead.

To the Mountain trail and Corridor Trail Trailhead: From the park entrance turn right on Pilot Knob Park Rd. At the stop sign turn right on Old Winston Rd. Go to the stop sign. Turn right on Old Hwy 52 South. At the post office turn right on Surry Line Rd. Follow this road for 2 miles to the intersection with Culler Rd and the parking area.



MOUNTAIN SECTION

TRAILS

Corridor	6.6 miles	strenuous
Grossy Ridge	1.7 miles	moderate
Grindstone	3.0 miles	strenuous
Jomeokee	0.8 miles	moderate
Ledge Spring	1.6 miles	strenuous
Little Pinnacle Overlook	0.1 miles	easy
Mountain	4.3 miles	strenuous
Pilot Creek Trail	3.3 miles	moderate
TRACK Trail	0.3 miles	moderate

LEGEND

Accessible	Hospital	Primitive Camping
Bridle Trail	Park Boundary	Restrooms
Discovery Area	Park Office	Roads
Family Camping	Parking Area	Gravel
Hiking Trail	Picnicking Area	Paved
Horse Trailer Parking	Telephone	Point of Interest

PARK MAP – YADKIN RIVER SECTION

