

Lumber River State Park General Management Plan



***North Carolina Department of
Natural and Cultural Resources
Division of Parks and Recreation***

***Coastal Plain Region
September 2022***

PAGE INTENTIONALLY LEFT BLANK

TABLE OF CONTENTS

I.	Mission and Purpose	4
II.	History	6
III.	Themes and Inventory	9
	Facilities	11
	Trails.....	18
IV.	Planning	24
	Land Protection Plans.....	25
	Projects	31



I. MISSION AND PURPOSE

GENERAL MANAGEMENT PLANS:

The 1987 State Parks Act (G.S.143B - 135.40) requires each park to have an individual General Management Plan. As required, these plans seek to identify an individual parks purpose as a unit within the larger parks system and provide an analysis of the parks major resources and facilities. The GMP also identifies current and future needs of the park and prioritizes a list of proposed projects intended to meet those identified needs. These plans are considered living documents, recognizing the various and dynamic factors which influence the planning process. Each park's GMP is scheduled to be revisited every five years, or sooner if needed, to reflect the direction and vision of the State Parks Division.

N.C. STATE PARKS MISSION:

The 1987 State Parks Act also defines the purpose of the state parks system. It establishes that: The State of North Carolina offers unique archaeological, geologic, biologic, scenic and recreational resources. These resources are part of the heritage of the people of this State. The heritage of a people should be preserved and managed by those people for their use and for the use of their visitors and descendants.



OUR MISSION

The North Carolina
Division of Parks and Recreation
exists to inspire all
its citizens and visitors through
conservation, recreation and education.

CONSERVATION
To conserve and protect representative
examples of North Carolina's natural beauty,
ecological features, recreational and cultural
resources within the state parks system;

RECREATION
To provide and promote safe, healthy
and enjoyable outdoor recreational
opportunities throughout the state; and

EDUCATION
To provide educational opportunities
that promote stewardship of the state's
natural and cultural heritage.



I. MISSION AND PURPOSE

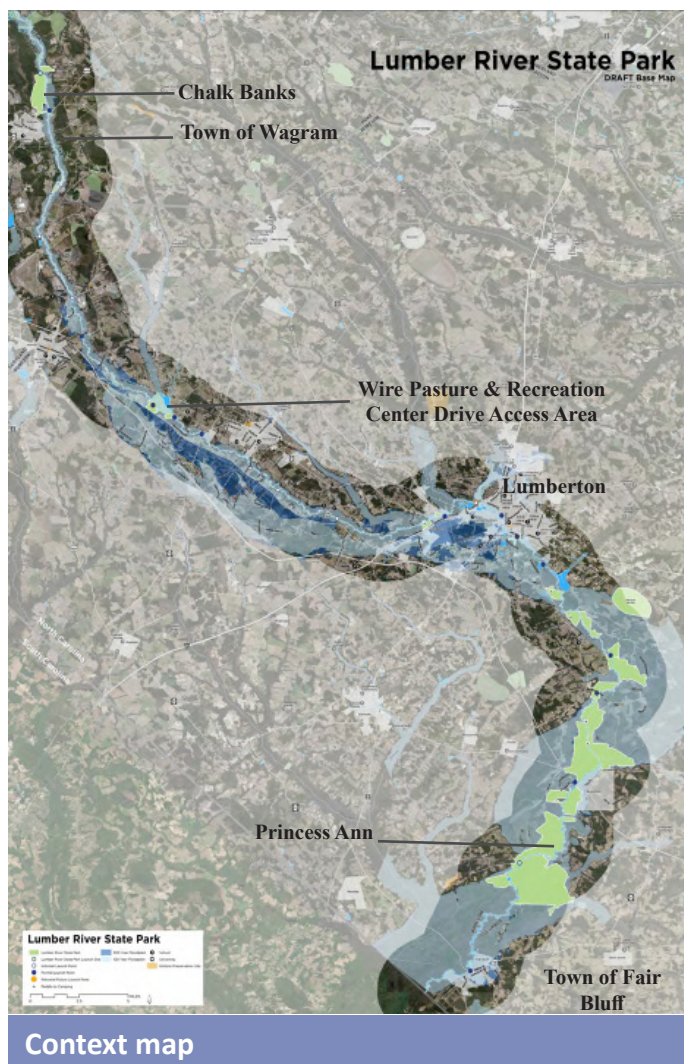
PARK OVERVIEW:

Lumber River State Park is located in the south- central portion of the coastal plains. This black water river meanders through four North Carolina counties: Robeson, Hoke, Scotland and Columbus and is divided into recreational, scenic and natural sections. The park headquarters is found at Princess Ann access, 70 miles east of Wilmington and 13 miles south of Lumberton. Chalks Banks is located 25 miles south of Pinehurst. This is a linear park, situated along the resource, the designated scenic and wild *Lumber River*. Princess Ann and Chalk Banks access areas manage the park operations, camping and day use areas. The remaining park is used for watershed protection and paddle access.



PARK PURPOSE:

On a national wild and scenic river, Lumber River State Park provides paddling, fishing and exquisite scenery. The Princess Ann and Chalk Banks access areas anchor two ends of the riverine park, with tent-friendly campgrounds, group campsites, picnic grounds and short hiking trails at both. Possibilities for kayaking and canoeing are extraordinary, but require careful planning due to fluctuating water levels and hazards. There have been 24 possible float trips identified along this black water river, ranging from one hour to about half a day. Pier and riverbank fishing is available for black crappie, largemouth bass, catfish and pan fish. The interpretive programs regularly include paddling and fishing excursions.



I. MISSION AND PURPOSE CONTINUED



Lumber River State Park is a linear park centrally located along the river corridor

II. HISTORY

The Lumber River has long been a source of transportation and subsistence by the Native Americans, spanning four counties in North Carolina. The earliest settlements, many along the river banks, are recorded as early as 20,000 B.C., and consisted of Nomadic cultures that gathered food and hunted. Upon European exploration and settlement, the river and the surrounding region was inhabited by four Native American groups – Siouan, Iroquoian, Algonkian, and Mukogegan. The river was a valuable source of agriculture, trading, fishing, and hunting for each of the tribes. While much archaeological history has not been preserved a few sites have been found along the high ground of the river containing Native American artifacts, fossils, and a dugout canoe. By the 18th century, the Waccamaw Tribe and ancestors of the Lumbee Tribe had settled along the river banks of the Lumber River in Robeson County.



Pow Wow ceremony at North Carolina Museum of History

The Lumber River has a long history of economic significance for the towns that are located along its banks. Deriving its name from the extensive timber harvesting and transporting done in the late 1700's, the river provided the ability to transport goods, causing the settlement of towns along its banks.

Princess Ann, the bluff on which the park's current headquarters are located, was chartered in 1796 as the second town in Robeson County. It was also the first inland town established by settlers traveling up the Lumber River from South Carolina. Settlers established the town on the bluff because they knew it would not be flooded and because the area provided a landing along the river. The town is preserved now only as the name of the road that leads to the river.

II. HISTORY (CONTINUED)

The 115-mile stretch of river that meanders through four North Carolina counties is divided into three sections: scenic, recreational and natural. The uppermost and narrowest part of the river, from State Road 1412 to Back Swamp, is designated as the scenic section because the land around the river is undeveloped. Accessible by only a few roads, this section provides the chance to experience the outdoors at its most natural state. The middle portion of the river from Back Swamp to Jacob Branch and a smaller area at the Fair Bluff city limits are classified as recreational areas. These areas allow recreational activities and offer scenic value. The river here is easily accessible by many roads. The section from Jacob Branch to the South Carolina border is classified as the natural segment of the river. This area is remote, generally accessible by trails.

The Lumber River is the only North Carolina black-water river to earn federal designation as a national wild and scenic river. The upper river was designated as North Carolina's first recreational water trail in 1978. In 1981, it was established as a national canoe trail, and the lower Lumber River was designated as a state canoe trail in 1984. The persistent interest of the Lumber River Basin Committee and other public interest groups contributed to the park's existence. In 1989, the General Assembly established the Lumber River as a natural and scenic river and also as a state park.

In 2017, Warwick Mill Bay State Natural Area was authorized as a park unit in Robeson County. This 975 acre unit has coastal bay significance and contains habitat for wading birds such as wood stork and herons.



The Lumber or Lumbee River is the ancestral land of the Native American tribe

LUMBER RIVER WILD AND SCENIC CLASSIFICATIONS





SIGNIFICANT AND SPECIES OF CONCERN

Lumber River State Park -List of Rare species				
Scientific Name	Common Name	major Group	Family	seotrack
<i>Hyla andersonii</i>	Pine Barrens Treefrog	AMPHIBIAN	HYLIDAE	SR
<i>Siren lacertina</i>	Greater Siren	AMPHIBIAN	SIRENIDAE	W3
<i>Stereochilus marginatus</i>	Many-lined Salamander	AMPHIBIAN	PLETHODON-TIDAE	W5
<i>Setophaga virens waynei</i>	Black-throated Green Warbler - Coastal Plain Population	BIRD	PARULIDAE	E
<i>Egretta caerulea</i>	Little Blue Heron	BIRD	ARDEIDAE	SC
<i>Certhia americana</i>	Brown Creeper	BIRD	CERTHIIDAE	SC
<i>Lanius ludovicianus</i>	Loggerhead Shrike	BIRD	LANIIDAE	SC, W2
<i>Accipiter striatus</i>	Sharp-shinned Hawk	BIRD	ACCIPITRI-DAE	SR
<i>Elanoides forficatus</i>	Swallow-tailed Kite	BIRD	ACCIPITRI-DAE	SR
<i>Nyctanassa violacea</i>	Yellow-crowned Night-heron	BIRD	ARDEIDAE	SR
<i>Falco sparverius</i>	American Kestrel	BIRD	FALCONIDAE	SR
<i>Setophaga coronata</i>	Yellow-rumped Warbler	BIRD	PARULIDAE	SR
<i>Sphyrapicus varius</i>	Yellow-bellied Sapsucker	BIRD	PICIDAE	SR
<i>Catharus guttatus</i>	Hermit Thrush	BIRD	TURDIDAE	SR
<i>Haliaeetus leucocephalus</i>	Bald Eagle	BIRD	ACCIPITRI-DAE	T
<i>Mycteria americana</i>	Wood Stork	BIRD	CICONIIDAE	T
<i>Chaetura pelagica</i>	Chimney Swift	BIRD	APODIDAE	W1
<i>Nycticorax nycticorax</i>	Black-crowned Night-heron	BIRD	ARDEIDAE	W1
<i>Antrostomus carolinensis</i>	Chuck-will's-widow	BIRD	CAPRIMULG-IDAE	W1
<i>Antrostomus vociferus</i>	Eastern whip-poor-will	BIRD	CAPRIMULG-IDAE	W1
<i>Chordeiles minor</i>	Common Nighthawk	BIRD	CAPRIMULG-IDAE	W1
<i>Ammodramus savannarum</i>	Grasshopper Sparrow	BIRD	PASSERELLI-DAE	W1,W5
<i>Anhinga anhinga</i>	Anhinga	BIRD	ANHINGIDAE	W2
<i>Podilymbus podiceps</i>	Pied-billed Grebe	BIRD	PODICIPEDI-DAE	W2
<i>Eudocimus albus</i>	White Ibis	BIRD	THRESKIOR-NITHIDAE	W2
<i>Regulus satrapa</i>	Golden-crowned Kinglet	BIRD	REGULIDAE	W2,W5



SIGNIFICANT AND SPECIES OF CONCERN

Ilex amelanchier	Sarvis Holly	VASCULAR PLANT	AQUIFOLIA-CEAE	W1
Kalmia cuneata	White Wicky	VASCULAR PLANT	ERICACEAE	W1
Kalmia carolina	Southern Sheepkill, Carolina Wicky, Carolina Bog Myrtle	VASCULAR PLANT	ERICACEAE	W6
Smilax laurifolia	Laurel-leaf Greenbrier	VASCULAR PLANT	SMILACACE-AE	W6

Legend

E= Endangered

T= Threatened

SC = Special Concern

SR= Significantly Rare

W1=Rare but Relatively Secure (plants)

W2= Rare but Relatively Secure (animals)

W6= Regionally Rare Plants



III. THEMES AND INVENTORY

THEMES:

The significant archaeological, geologic, scenic, recreational and biological resources of North Carolina should be represented in the State Park system. These resources, as cited in the State Parks Act, are divided into sub-categories called resource “themes”. There have been 108 themes identified that should be protected to preserve representative examples of unique resources. For this General Management Plan, only themes that are of moderate to high significance to *Lumber River State Park* are shown.

LUMBER RIVER STATE PARK AREA THEME TABLE

THEME TYPE	THEME	LUMBER RIVER STATE PARK SIGNIFICANCE	STATE PARKS SYSTEM REPRESENTATION
Archaeological/Prehistoric	Campsite/ Activity Area	High	Adequate
Archaeological/Historic	Village	High	Moderate
Biological	Black water Coastal Plain Floodplains	High	Moderate
Biological	Brown water Coastal Plain Floodplains	High	Moderate
Biological	Coastal Plain Non-alluvial Mineral Wetlands	Moderate	Little
Biological	Dry Long leaf Pine Communities	High	Moderate
Biological	Peat Dome Pocosins	High	Moderate
Biological	Piedmont and Coastal Plain Mesic Forests	High	Adequate
Biological	Riverine Aquatic Communities	High	Moderate
Biological	Upland Seepages and Spray Cliffs	Little	Moderate
Biological	Wet Pine Savannas	High	Moderate
Geological	Fluvial Depositional Features	High	Adequate
Scenic	Forests	Moderate	Adequate
Scenic	Island	High	Little
Scenic	Rivers	High	Moderate
Scenic	Swamps	High	Adequate
Scenic	Scenic Vistas	High	Moderate

*See the System wide Plan for references to Theme and Inventory terms. Themes have both actual and “potential” future needs to be at a park.

III. THEMES AND INVENTORY



Black water Coastal Plain Floodplains



Black River natural community supports Cypress-Gum Swamp and Black water Bottom land Hardwood Forest

Inventory:

Lumber River State Park is a linear park, that currently has two main nodes, Chalk Banks to the north and Princess Ann to the south. The visitation was 173,543 in 2020 and is split 50% , 25% and 25% between Chalk Banks, Wire Pasture, and Princess Ann, respectively. Many visitors access the river from various points including: WRC Ramp, NCDOT crossings and private property.

Ensuring our facilities are of adequate size and numbers, and that they are good operable condition helps us to provide quality visitor experiences. The following section is an inventory of the park facilities and trails.

Facility Inventory:

Lumber River State Park was established in 1989 and much of the infrastructure was built in the 1980's. Due to the age of much of the infrastructure and heavy visitor use, numerous facilities and infrastructure systems are showing their age. The inventory chart explains the park staffs perceived condition of the structures. See Appendix A.

Ensuring our facilities are adequate for current and future visitation, and that they are in good operable condition helps us to provide quality visitor experiences. The following section inventories the parks facilities and trails.

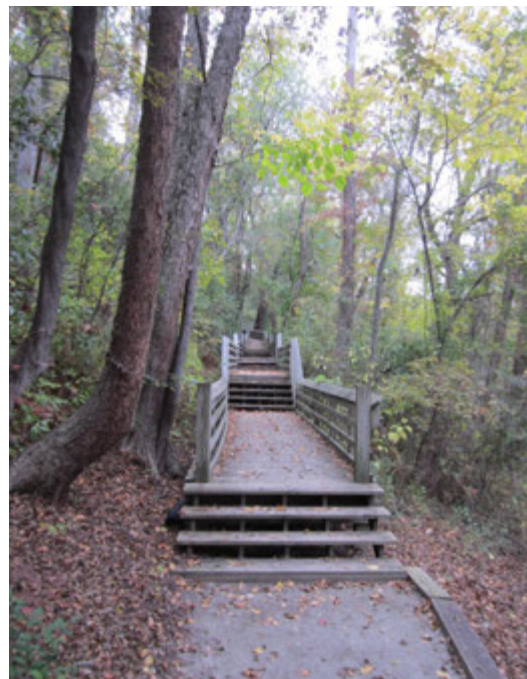
Trails Inventory:

Lumber River State Park provides 4.82 miles at both 1.56 miles at Princess Ann and 3.26 miles Chalk Banks access areas hiking trails for a variety of challenges.

However, due to extensive use by visitors, flooding, soils, age, and unsustainable design, many of the trails need significant repairs.

Paddle Trails:

A 115 mile paddle trail runs along the Lumber River with several park managed land and access areas. A majority of the river frontage is owned by private landowners and Lumber River conservancy.

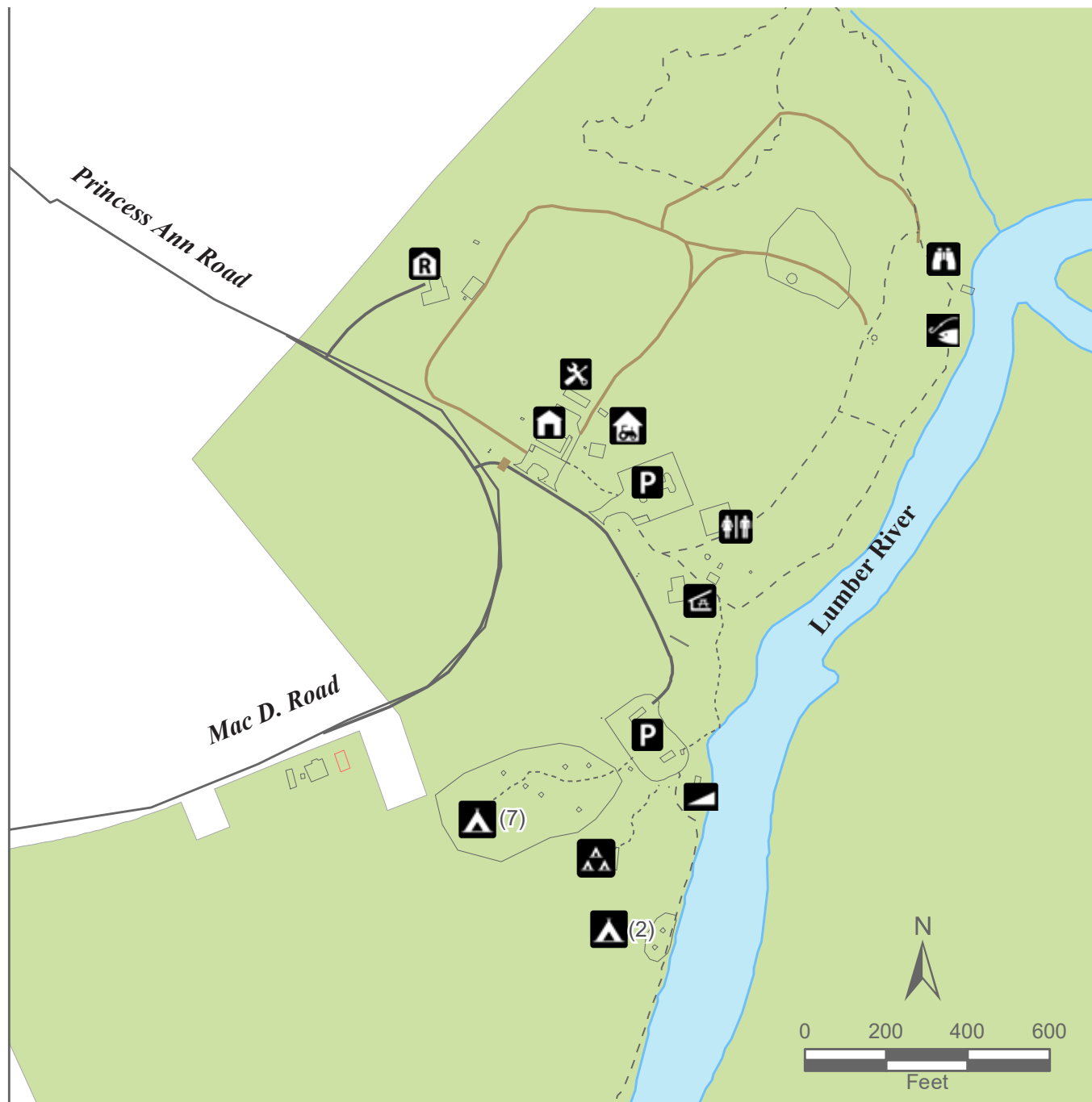


Timber steps leading to Griffins Whirl provide a pathway for park visitors along with school groups



The restroom at Princess Ann was built in 1989.

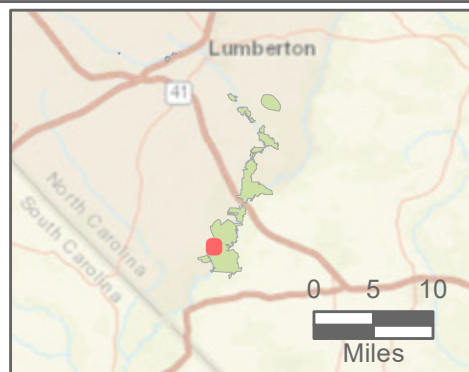
FACILITY INVENTORY - PRINCESS ANN ACCESS



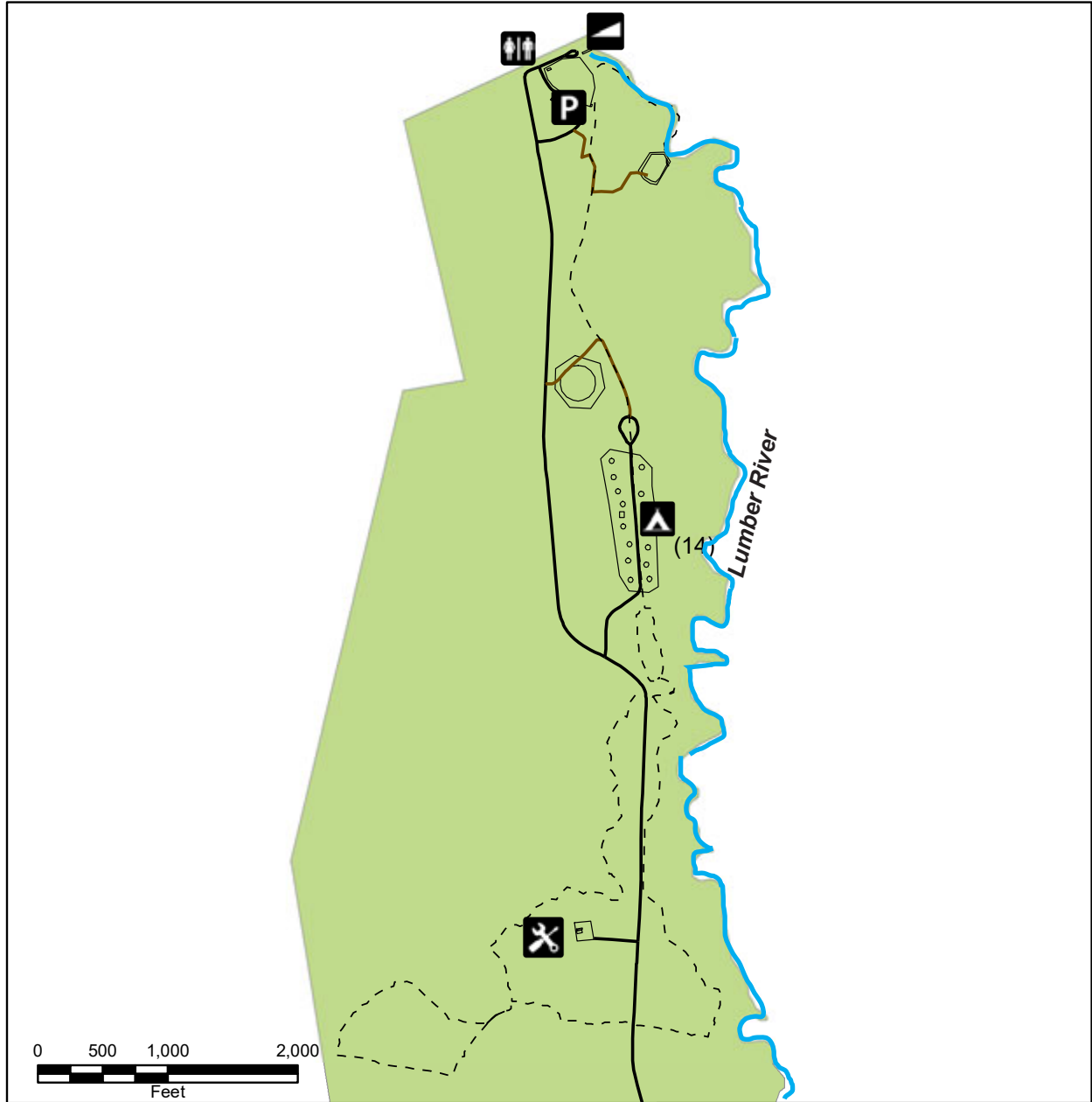
Lumber River State Park Princess Ann Access

- Primitive group camping
- Parking Area
- Ranger Residence

- Canoe Launch
- Fishing Pier
- Primitive camping
- Restroom
- Picnic Shelter
- Observation Area



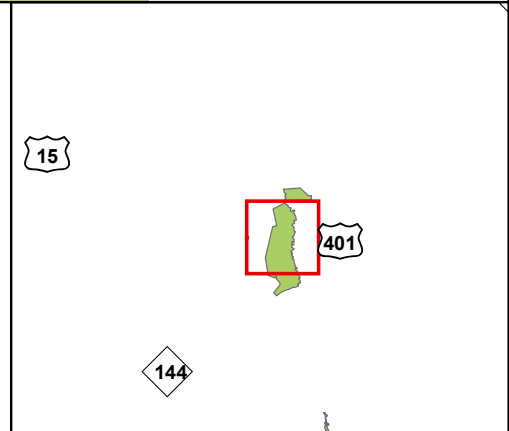
FACILITY INVENTORY - CHALK BANK ACCESS



Lumber River State Park
 Facility Inventory
 Chalk Banks Access
 AUGUST 2022



- Canoe boat ramp
- Maintenance bldg
- Vault toilet
- Parking Area
- Primitive camping





FACILITY INVENTORY - APPENDIX A

Lumber River State Park - Facility Inventory				
			Park Area(If Applicable): Lumber River State Park	
Public Buildings				Date(07/21):
	Unit	Total #	Condition	Repairs needed(If Applicable)
	Toilet Building- Princess Ann	1	Fair	
	Toilet Building -Chalk Banks	2	Fair	Not Accessible, too small for school groups
	Toilet Building - Non-Flush	1	Fair	Installed on a raised ramp system, Small toilet, Replace with vault toilet
	Picnic Shelter -Princess Ann - Large	1	Fair	31 years old
	Princess Ann Group Tent Camp	1	Fair	
	Horseshoe Pit - Princess Ann	1	Poor	Located near restroom
Staff Buildings	Unit	Total #	Condition	Repairs needed(If Applicable)
	Park Office - Princess Ann	1	Good	New roof and interior completed in 2019/2020
	Park Office - Wagram (leased)	1	Poor	Located in downtown Wagram away from the park.
	Superintendent house near Princess Ann office	1	Good	
	Superintendent Storage Building	1	Good	Storage of equipment near residence
	Storage Building - Princess Ann	1	Fair	
	Storage container	1	Good	Purchase in 2019.
	Storage Building - Chalk Banks	1	Poor	Metal Container
	Maintenance area - Chalk Banks	1	Fair	Needs electricity
	Maintenance Shop - Chalk Banks	1	Good	Metal building, needs electricity
	Storage Building -	1	Fair	



FACILITY INVENTORY - CONTINUED

Recreation Facilities	Unit	Total #	Condition	Repairs needed(If Applicable)
	Boat Ramp at Princess Ann	1	Fair	
	Canoe Launch Point- Chalk Banks	1	Good	
	Observation Structure at Princess Ann		Fair	Not Accessible, Access to structure goes down a steep hill
	Picnic Area-Princess Ann	2	Good	
	Picnic Area-Chalk Banks	1	Fair	
	Campsite- Paddle In- Chalk Banks	1	Fair	
	Campsite- Paddle In- Jasper Memory	1	Good	
	Campsite- Paddle In - John Culbreath	1	Fair	
	Campsite - Paddle In - Buck landing	1	Fair	
	Campsite - Paddle In - Piney Island	1	Fair	
	Tent Camp, Walk-In- Jasper Memory	1	Fair	Possible installation of a vault toilet nearby
	Tent Camp, Walk-In-John Culbreth	1	Fair	
	Group Camp - Princess Ann	1	Fair	Replace timber edging due to storm damage
	Group camp - Princess Ann - Overflow	1	Fair	Replace timber edging due to storm damage?
	Group Camp - Chalk Banks	1	Fair	
	Primitive Campsite - Princess Ann access	9	Fair	
	Primitive Campsite at Chalk Banks	14	Fair	Needs electrical connection, no shower-house due to floodplain and unsuitable soils.



FACILITY INVENTORY - CONTINUED

Infrastructure	Unit	Total #	Condition	Repairs needed(If Applicable)
	Boardwalk- Princess Ann Trail	1	Fair	100 Lin Ft Boardwalk needs treads repaired or replaced
	Transformer at Princess Ann office	2	Poor	Upgrade from 30 ampere to 50 ampere
	Transformer at Chalk Banks	1	Poor	Maintenance area needs electrical hook up
	Phone at Princess Ann office	1	Fair	
	Internet at Princess Ann	1	Poor	Limited reception along 4 counties. Robeson County has poor reception . Need to install a radio tower
	Internet at Chalks Banks	1	Poor	Limited reception in Scotland County
	Well		Fair	2 spigots at Princess Ann; 2 spigots at Chalk banks
	Septic Fields	5	Poor	Needs annual inspection
	Paved Road		Fair	Seal coat Princess Ann parking lot.
	Unpaved Road at Chalk Banks		Poor	Pave Chalks Banks Entrance road to provide emergency access
	Canoe Launch Areas		Good	On Grade canoe Launch
Parking	Unit	Total # spaces	Condition	Repairs needed (If Applicable)
	Parking lot - Office	7	Fair	2 accessible spaces, install shade trees
	Parking Lot - Office Accessible	1	Good	
	Parking Lot - Princess Ann Day Use	42	Fair	Paved lot, needs paint stripping, install shade trees
	Parking Lot - Accessible	2	Good	
	Parking Lot- Chalk Banks North side	25	Fair	Gravel lot, needs wheel stops
	Gravel Parking lot - Chalks Banks		Fair	Loading/drop off zone
	Gravel Parking Lot - Princess Ann - Naked Landing		Fair	Loading/drop off zone
	Parking Lot- Boat Launch area	9	Fair	Needs paint stripping,
	Parking Lot - Staff at Maintenance Yard	16	Poor	Needs wheel stops and additional gravel

ADDITIONAL NOTES:

Lumber River State Park was established in 1989 and a majority of the facilities are past their lifespan. Several structures, including ranger residences need to be demolished and constructed to current design and construction standards. An archaeological study needs to be done prior to construction due to culturally sensitive areas.



The observation deck overlooking Griffin Whirl at Princess Ann is used for both fishing and ranger led interpretive walks



TRAIL ASSESSMENT

“Often, the most popular and heavily used trails in our parks are the most impacted. A method was developed to take a simple survey of trail popularity and condition in each state park based on observations and information reported by the superintendent. Values were assigned for trail popularity and trail condition with a description provided for each value. Superintendents were requested to fill out the two values for each park trail. This resulted in a final “Trail Score” to determine the priority that should be assigned for maintenance, reroutes or redesign of each trail. The results from the survey generally support that the most popular trails have the most maintenance needs. Using this “Trail Score” to determine the priority of trail projects at a park will allow the Division to improve the visitor experience for the largest number of trail users.”

Status	Description
1	Good condition/some routine trail maintenance required
2	Moderate trail maintenance required
3	Heavy erosion in places and/or unsustainable grades.
4	Trail closed due to erosion, damage, or other reasons. Make comments on closure reason.
Popularity	Description
4	Single most popular trail in the park w/ most visitors hiking this trail
3	Very popular trail with heavy usage in the park
2	Moderate usage by park visitors but other trails in the same park are more popular
1	Very little traffic overall or compared to other trails in the same park

TRAILNAME	USE	SURFACE	WIDTH	Blaze	Status	Popularity	Priority Score
Chalk Banks Trail	Hike	Natural	2	Blue/Red	3	3	6
Griffin Bluff/Track Trail	Hike	Natural	2	Orange	1	3	4
Griffins Bluff Trail	Hike	Natural	2	Red	1	3	4
Mill Hole Trail	Hike	Natural	2	Blue/Multiple shape	3	3	6
Naked Landing Trail	Hike	Natural	2	Yellow	1	3	4



TRAIL INVENTORY

Chalk Banks Trail: This 3.00 -mile loop trail that begins at the Chalk Banks day use parking lot. The trail can also be accessed from campground and middle parking area.

Chalk Banks Track Trail: This 0.26 mile long easy loop trail is located at the Chalk Banks Access. This educational trail circles a pond, wetlands and crosses streams.

Griffin Bluff Trail: This 0.50 mile long moderate loop trail is located at the Princess Ann access beside the restroom building. The trail features an observation deck and interpretive panels overlooking Griffin's Whirl; a unique reverse flow along the river corridor.

Mill Hole Trail: This moderate 0.61 mile long loop trail is located at Princess Ann access. This trail is located just north of the observation deck on the Griffin Bluff Trail.

Naked Landing Trail: This 1.50 mile long loop trail is located in the Town of Orrum at Princess Ann access area. The trail starts at the picnic shelter and continues along the highest bank of the Lumber River. The trail features a 100-foot boardwalk across a wetland area, a fishing pier and millpond nearby.

Princess Ann Tract Trail: This 0.29 mile moderate trail is located at the Princess Ann Access and overlaps half of the Griffin Bluff Trail.

TRAIL INVENTORY	HIKING
Chalk Banks Trail	3.00
Chalk Banks Track Trail	0.26
Griffin Bluff Trail	0.50
Mill Hole Trail	0.61
Naked Landing Trail	0.16
Princess Ann Trail	0.29
TOTAL HIKING TRAILS (Miles)	4.82
<u>Lumber River Paddle Trail (MILES)</u>	<u>115</u>

PADDLE TRAIL INVENTORY

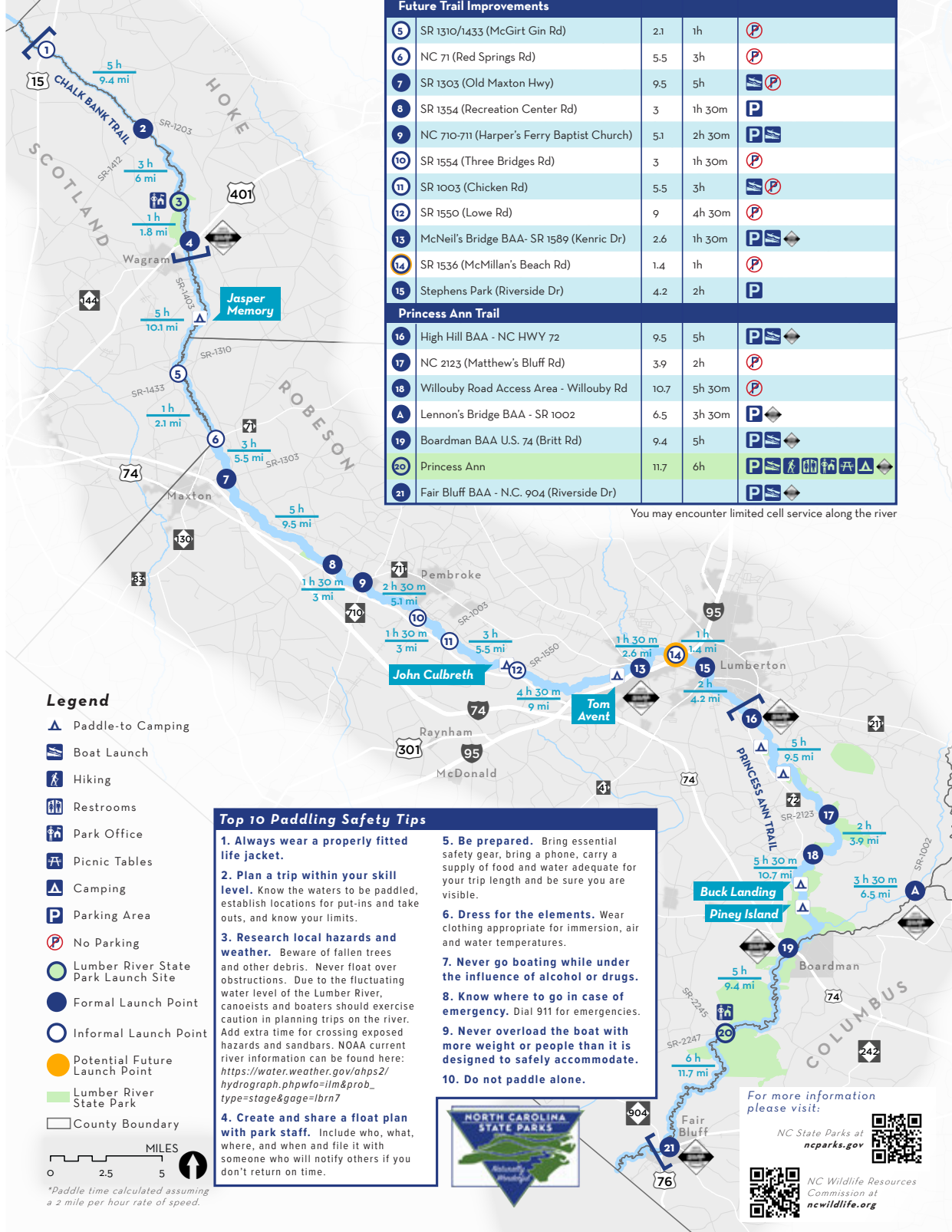
The Lumber River is divided into three sections: scenic, recreational and natural over 115 river miles. Each section offers a variety of natural wonders as it meanders through a four-county region of the North Carolina Coastal Plain. The scenic section is the uppermost part which flows from State Road 1412 to Back Swamp and is the narrowest portion of the river. It is classified as scenic because it is undeveloped and provides the user with the chance to experience the 'backcountry' with little accessibility by people, development and roads. The middle portion of the river from Back Swamp to Jacob Branch and a smaller area at the Town of Fair Bluff are classified as recreational areas. These areas provide recreational as well as scenic values, and are easily accessible by main roads. The last section from Jacob Branch to the South Carolina border is the natural section of the river. The natural section is remote country and is generally only accessible by trails. The Lumber River is the fourth river in the state - and the only North Carolina black water river-to earn federal designation as a national wild and scenic river.



Canoe launch area at Princess Ann

Lumber River State Park

Paddle Map



Access #	Location (BAA, Boat Access Area)	River Miles to Next Access	Time to Next Access	Amenities
Chalk Bank Trail				
1	U.S. 15-501	9.4	5h	P
2	SR 1412 (N Turnpike Rd)	6	3h	P
3	Chalk Banks	1.8	1h	P, ♿, 🚻, 🪑, 🏕️, 🚰
4	Wagram BAA U.S. 401 (Raeford Rd)	10.1	5h	P, ♿
Future Trail Improvements				
5	SR 1310/1433 (McGirt Gin Rd)	2.1	1h	P
6	NC 71 (Red Springs Rd)	5.5	3h	P
7	SR 1303 (Old Maxton Hwy)	9.5	5h	P, ♿
8	SR 1354 (Recreation Center Rd)	3	1h 30m	P
9	NC 710-711 (Harper's Ferry Baptist Church)	5.1	2h 30m	P, ♿
10	SR 1554 (Three Bridges Rd)	3	1h 30m	P
11	SR 1003 (Chicken Rd)	5.5	3h	P, ♿
12	SR 1550 (Lowe Rd)	9	4h 30m	P
13	McNeil's Bridge BAA - SR 1589 (Kenric Dr)	2.6	1h 30m	P, ♿
14	SR 1536 (McMillan's Beach Rd)	1.4	1h	P
15	Stephens Park (Riverside Dr)	4.2	2h	P
Princess Ann Trail				
16	High Hill BAA - NC HWY 72	9.5	5h	P, ♿
17	NC 2123 (Matthew's Bluff Rd)	3.9	2h	P
18	Willouby Road Access Area - Willouby Rd	10.7	5h 30m	P
A	Lennon's Bridge BAA - SR 1002	6.5	3h 30m	P, ♿
19	Boardman BAA U.S. 74 (Britt Rd)	9.4	5h	P, ♿
20	Princess Ann	11.7	6h	P, ♿, 🚻, 🪑, 🏕️, 🚰
21	Fair Bluff BAA - N.C. 904 (Riverside Dr)			P, ♿

You may encounter limited cell service along the river

Legend

- Paddle-to-Camping
- Boat Launch
- Hiking
- Restrooms
- Park Office
- Picnic Tables
- Camping
- Parking Area
- No Parking
- Lumber River State Park Launch Site
- Formal Launch Point
- Informal Launch Point
- Potential Future Launch Point
- Lumber River State Park
- County Boundary

MILES
0 2.5 5

*Paddle time calculated assuming a 2 mile per hour rate of speed.

Top 10 Paddling Safety Tips

1. **Always wear a properly fitted life jacket.**
2. **Plan a trip within your skill level.** Know the waters to be paddled, establish locations for put-ins and take outs, and know your limits.
3. **Research local hazards and weather.** Beware of fallen trees and other debris. Never float over obstructions. Due to the fluctuating water level of the Lumber River, canoeists and boaters should exercise caution in planning trips on the river. Add extra time for crossing exposed hazards and sandbars. NOAA current river information can be found here: https://water.weather.gov/ahps2/hydrograph.php?wfo=ilm&prob_type=stage&gage=lbrn7
4. **Create and share a float plan with park staff.** Include who, what, where, and when and file it with someone who will notify others if you don't return on time.
5. **Be prepared.** Bring essential safety gear, bring a phone, carry a supply of food and water adequate for your trip length and be sure you are visible.
6. **Dress for the elements.** Wear clothing appropriate for immersion, air and water temperatures.
7. **Never go boating while under the influence of alcohol or drugs.**
8. **Know where to go in case of emergency.** Dial 911 for emergencies.
9. **Never overload the boat with more weight or people than it is designed to safely accommodate.**
10. **Do not paddle alone.**

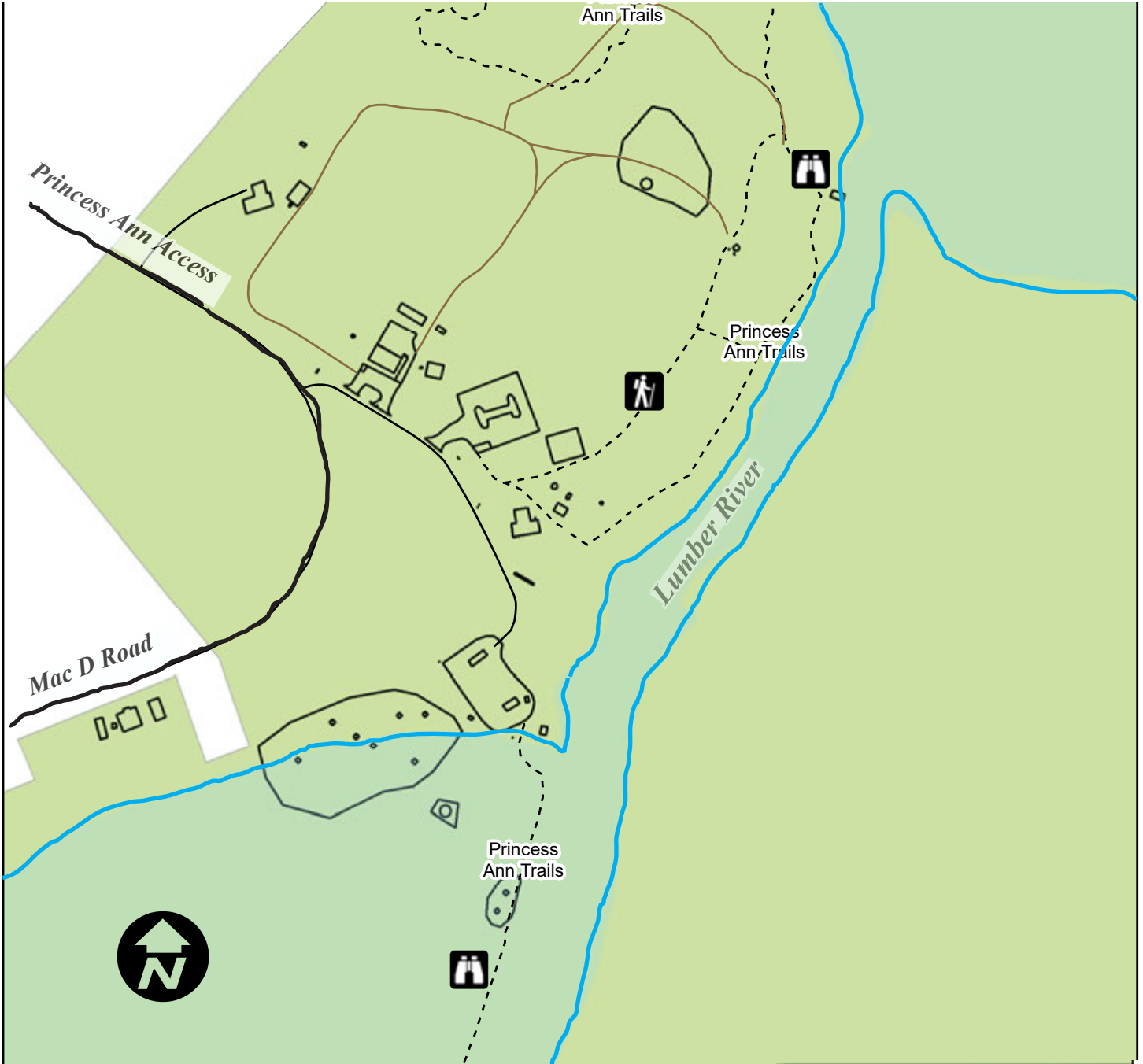


For more information please visit:

NC State Parks at ncparks.gov

NC Wildlife Resources Commission at ncwildlife.org

TRAIL INVENTORY- PRINCESS ANN



Lumber River State Park Trail Inventory

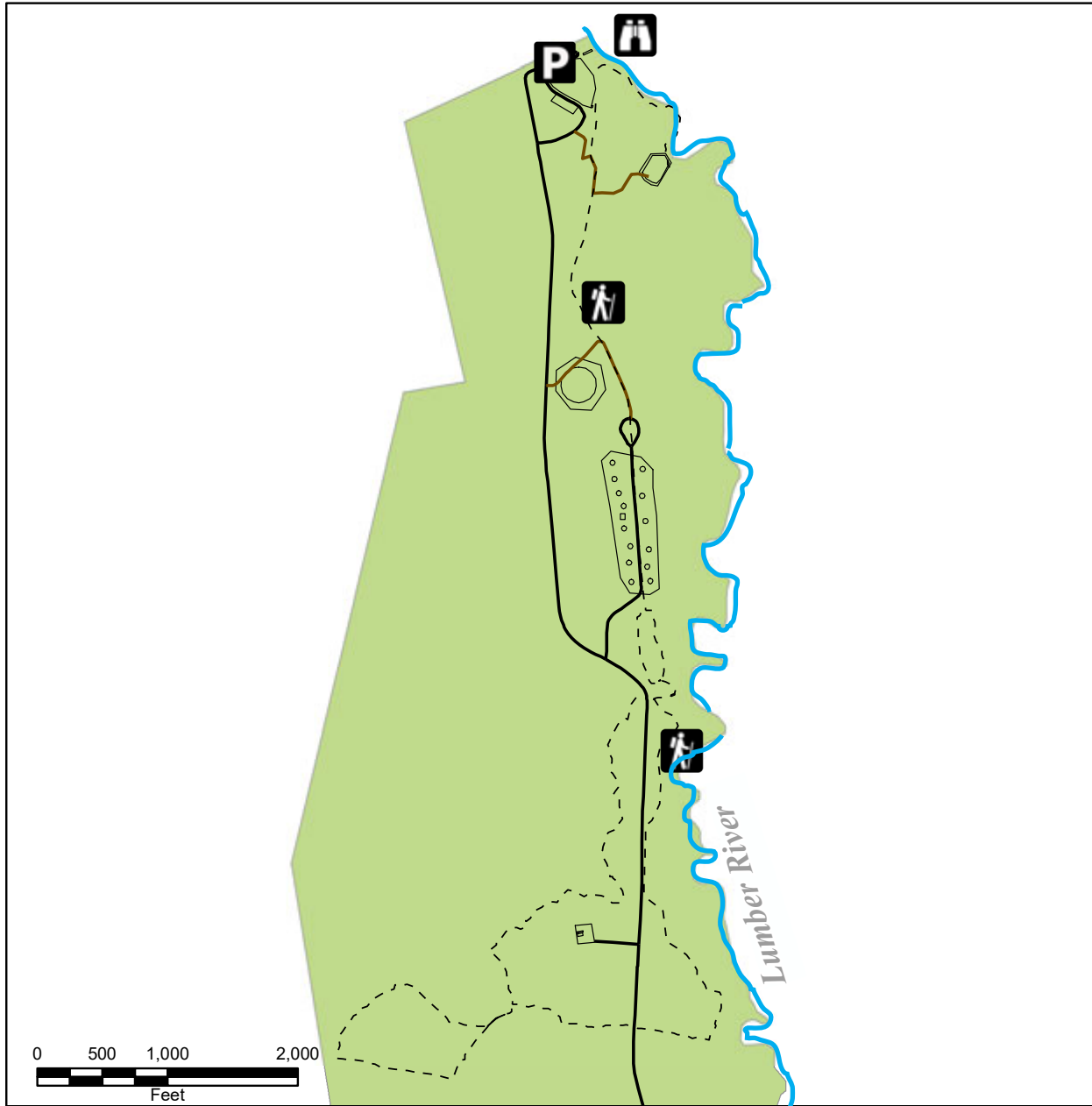
Princess Ann Access

September 2022

- Road - Paved
- Road - Unpaved
- Existing Trails
- Existing Facilities
- State Parks Unit
- Observation
- Trail



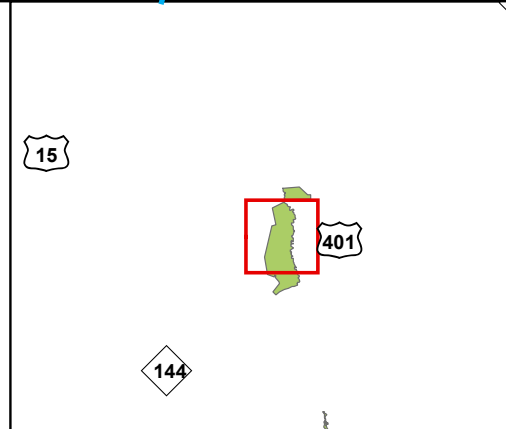
TRAIL INVENTORY- CHALKS BANKS



Lumber River
State Park
Trail Inventory
Chalk Banks Access
September 2022



- Parking Lot
- Observation
- Trail



IV. PLANNING

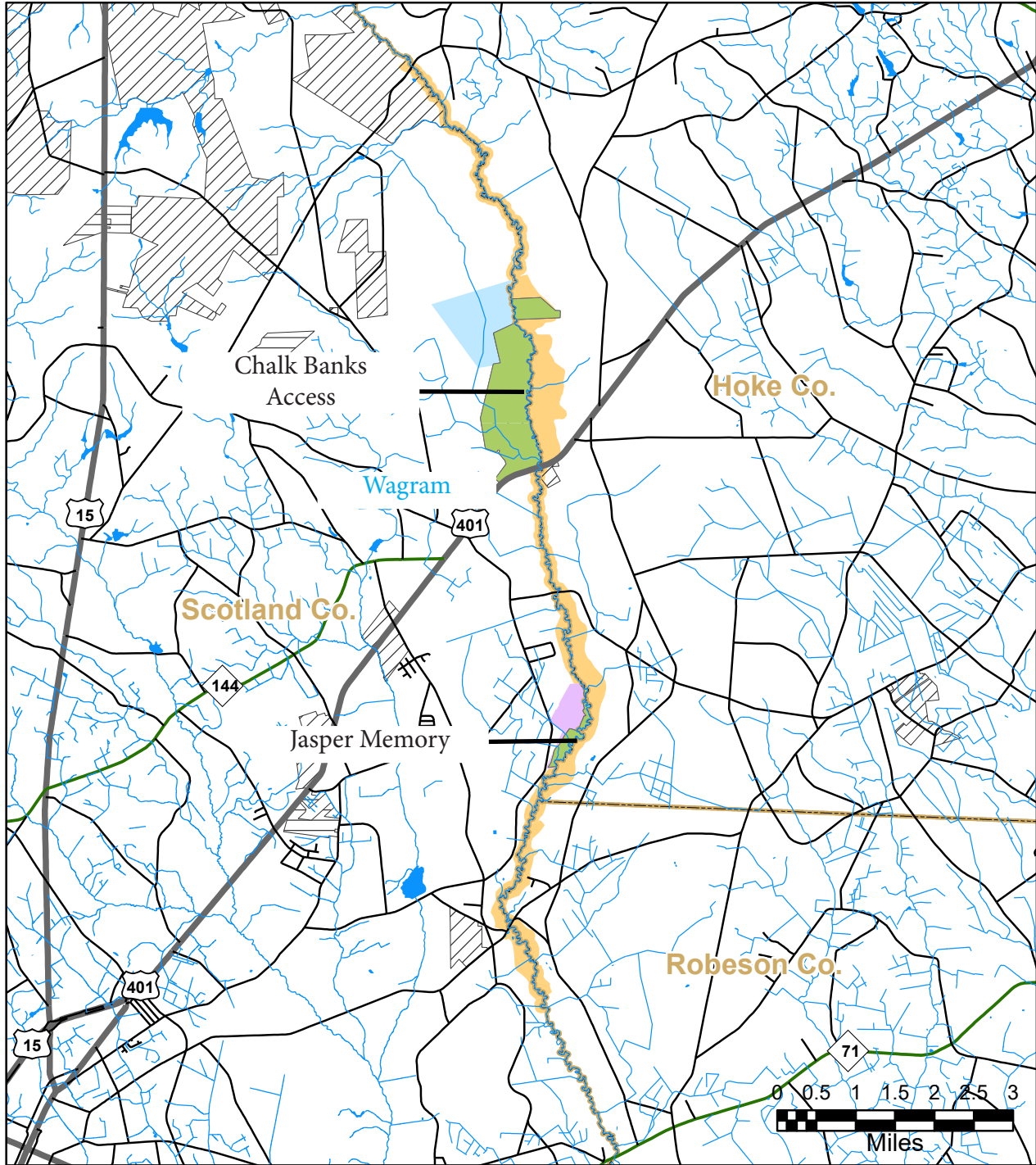


Scenic and wild river corridor of a backwater river provides short and long distance paddle and primitive camping opportunities

LAND PROTECTION FOR STATE PARKS:

To achieve the highest level of connectivity between park properties already owned by the State of North Carolina, further acquisition of land is expected to take place. Additional land will ensure the maximum protection of natural resources, scenic preservation, outdoor recreation and public access. Each park has several tracts of land that have been distinguished as a future need or a critical need for the park. The following map shows Land Acquisition needs for Lumber River State Park.

LAND PROTECTION PLAN - NORTH REGION

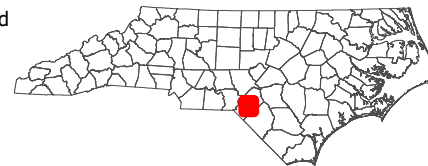


Lumber River State Park - North

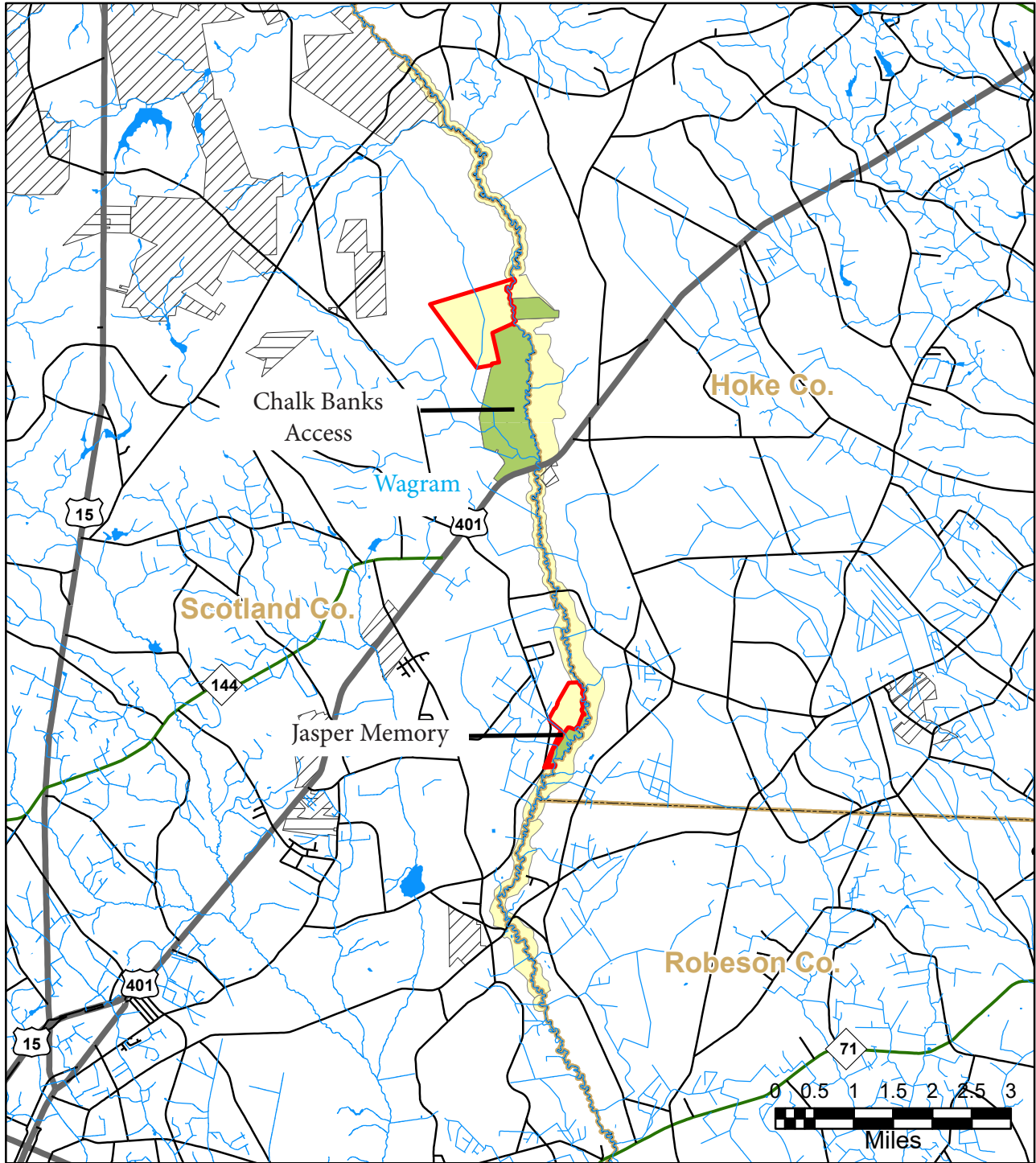


August 2022

- | | |
|---------------------------------|-------------------------|
| State Parks Unit | Other Conservation Land |
| Land Protection Plan Objectives | Federal |
| Primary resource protection | State |
| Inholding | Other |
| Scenic protection | |
| Water quality protection | |
| Facilities development | |
| Buffer | |



LAND PROTECTION PLAN - NORTH REGION- CRITICAL ACRES

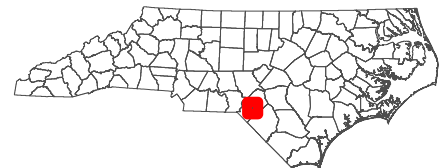


Lumber River
State Park
- North

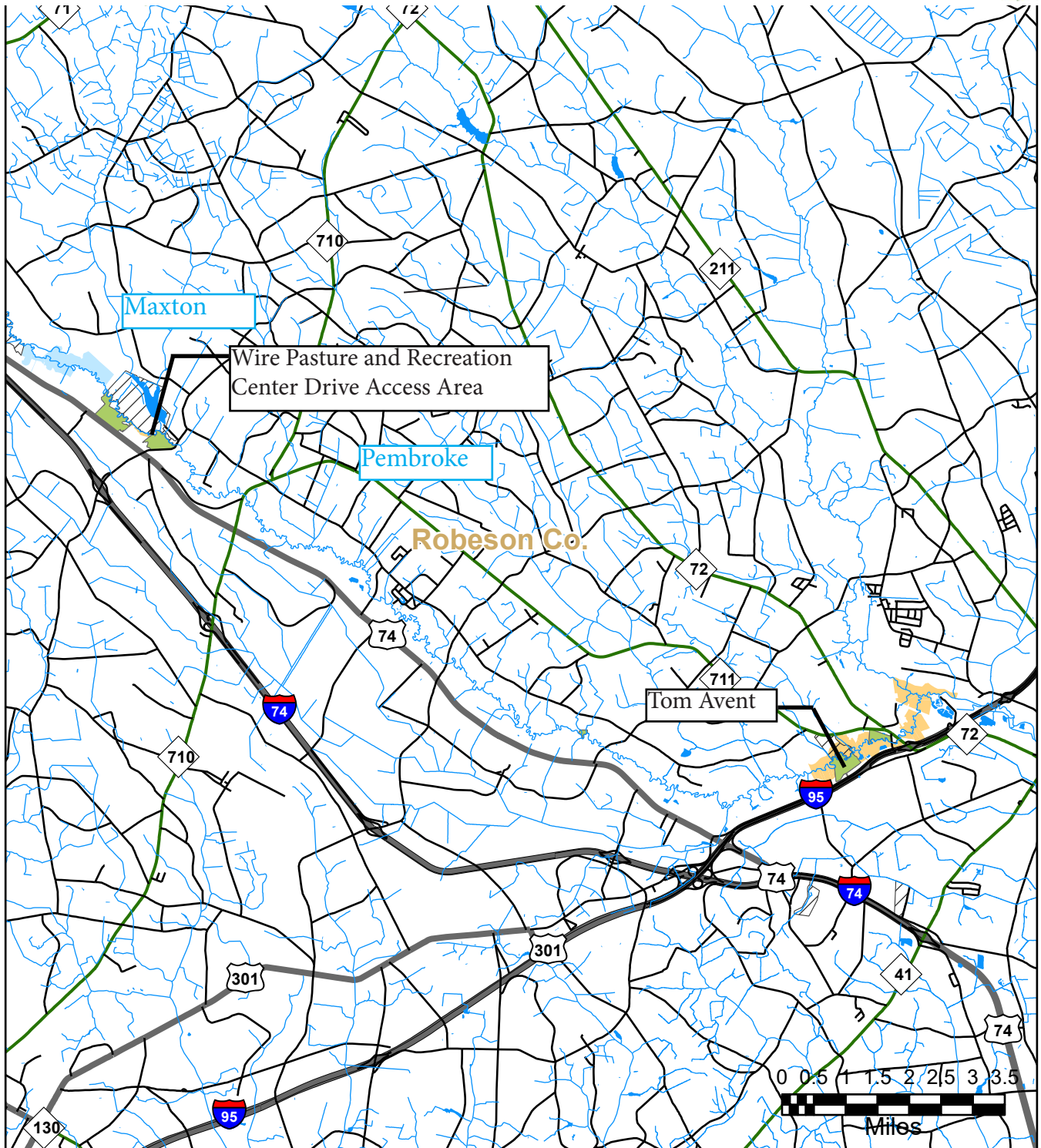


August 2022

- State Parks Unit
- Critical Need
- Future Need
- Other Conservation Land**
- Federal
- State
- Other



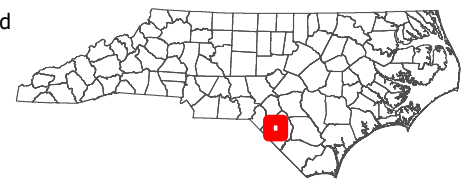
LAND PROTECTION PLAN - CENTRAL REGION



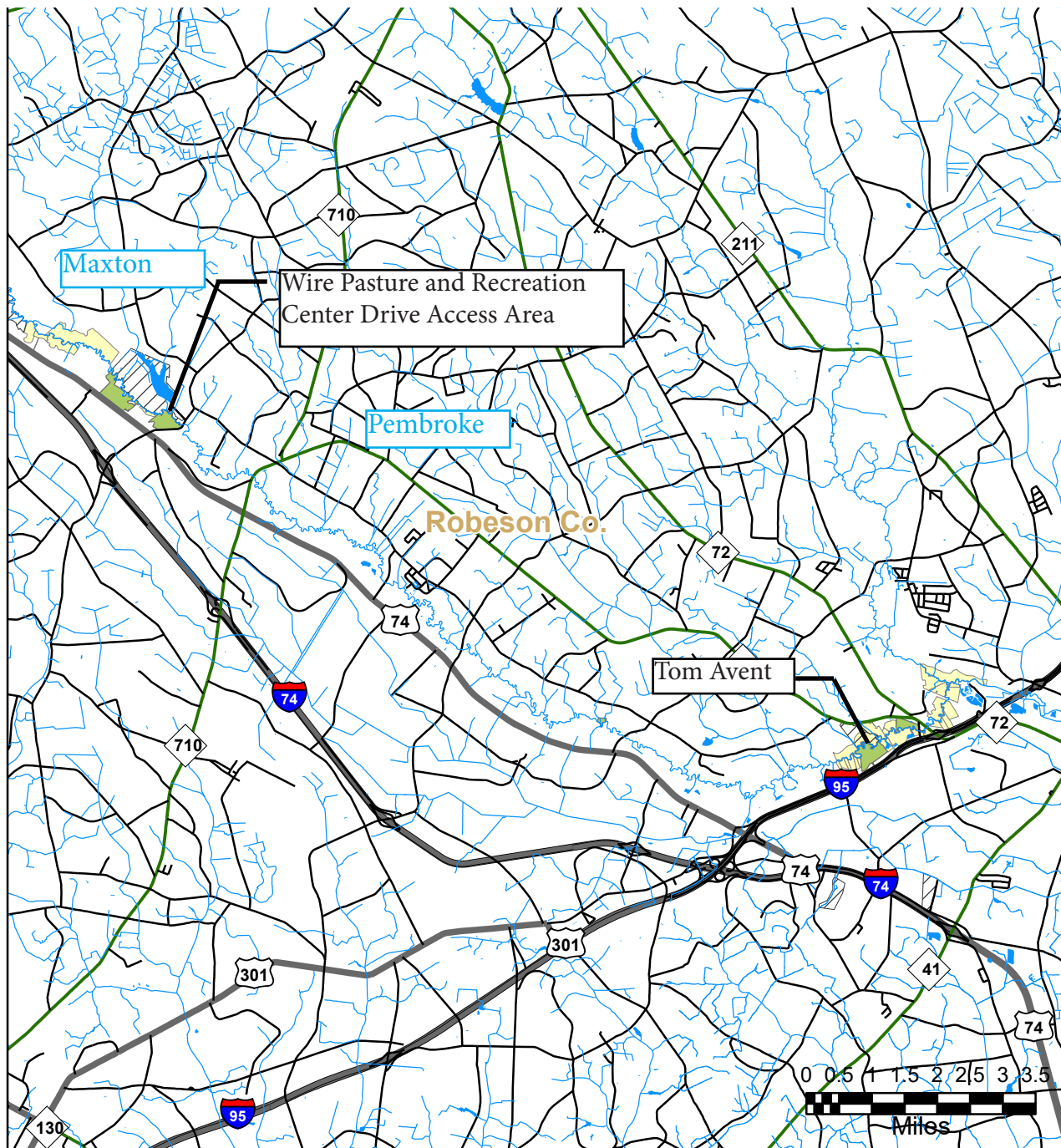
Lumber River State Park - Central



- | | |
|--|--|
| ■ State Parks Unit | Federal |
| Land Protection Plan Objectives | State |
| Primary resource protection | Other |
| Inholding | |
| Scenic protection | |
| Water quality protection | |
| Facilities development | |
| Buffer | |



LAND PROTECTION PLAN - CENTRAL REGION - CRITICAL ACRES



Lumber River State Park - Central

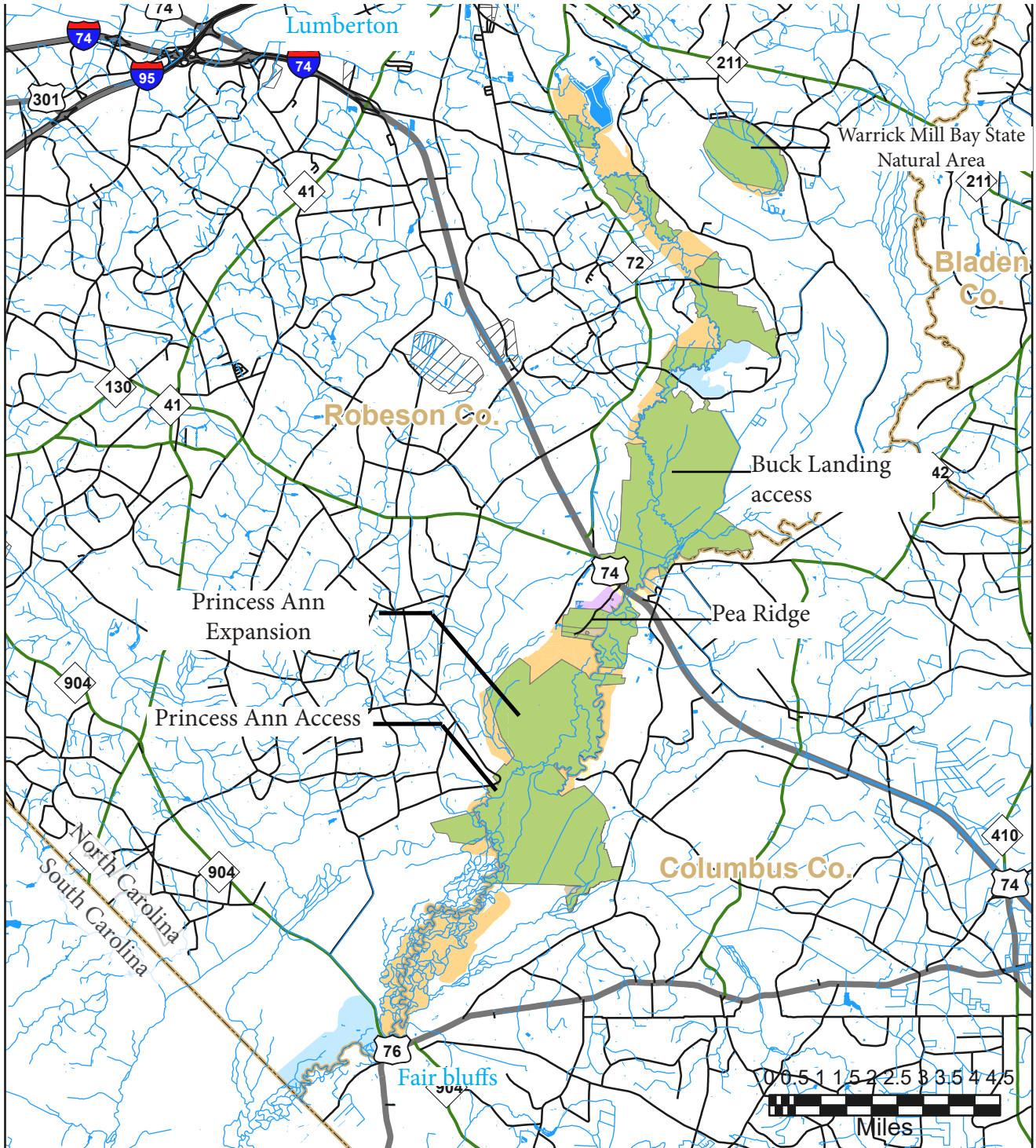


August 2022

- State Parks Unit
- Critical Need
- Future Need
- Other Conservation Land**
- Federal
- State
- Other



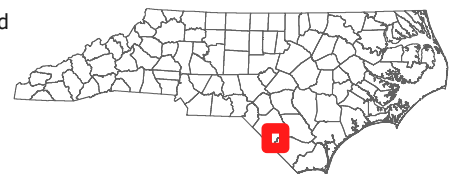
LAND PROTECTION PLAN - SOUTH REGION



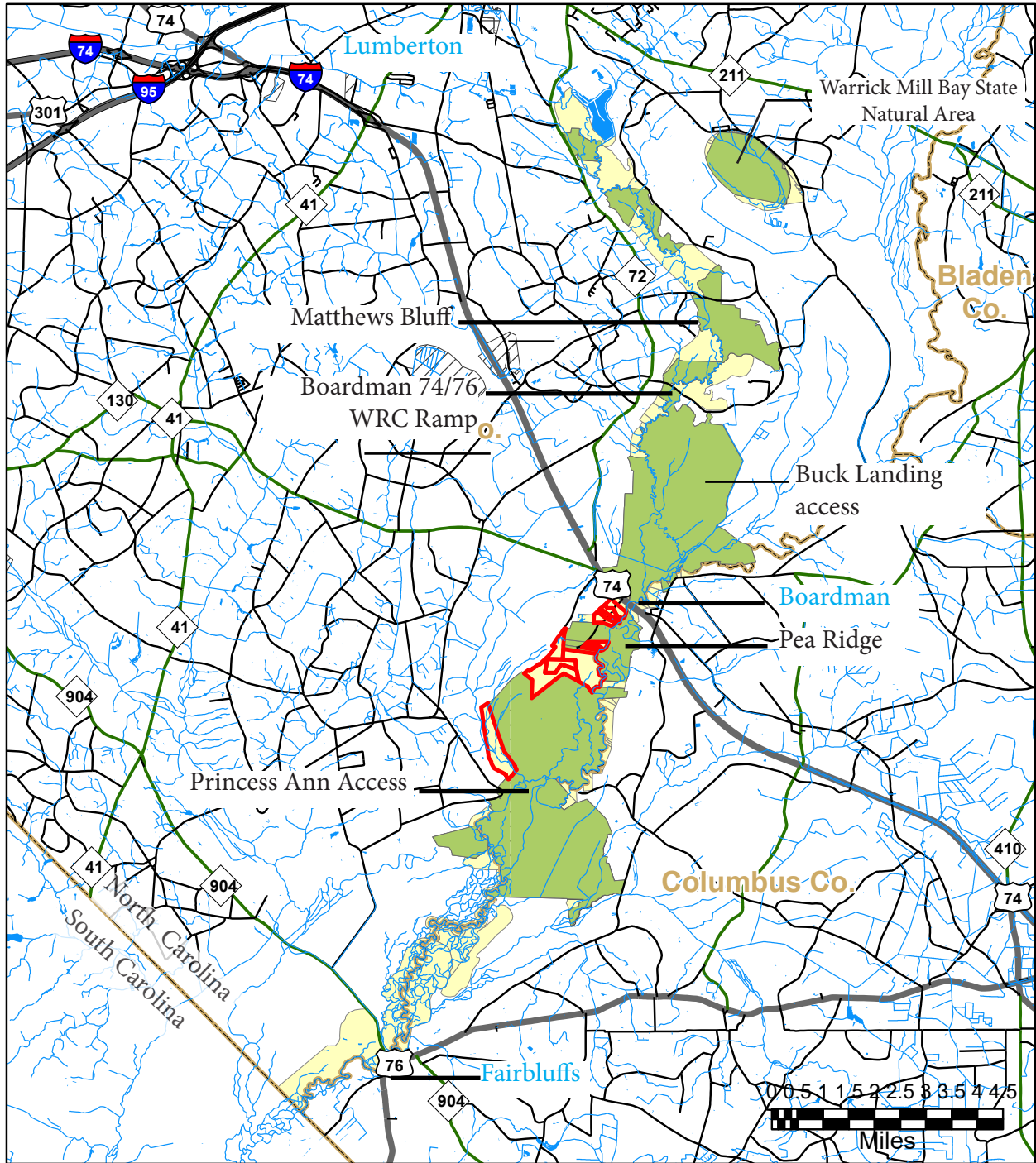
Lumber River State Park - South



- | | |
|--|---|
| State Parks Unit | Other Conservation Land |
| Land Protection Plan Objectives | Federal |
| Primary resource protection | State |
| Inholding | Other |
| Scenic protection | |
| Water quality protection | |
| Facilities development | |
| Buffer | |



LAND PROTECTION PLAN - SOUTH REGION - CRITICAL ACRES



Lumber River State Park - South



August 2022

- State Parks Unit
- Critical Need
- Future Need
- Other Conservation Land
 - Federal
 - State
 - Other





PROJECT LIST

BOND PROJECT	PROJECT TITLE	PROBABLE COST
1	Proposed Wiregrass Contact Station	\$2,713,750
PROJECT #	PROJECT TITLE	** CONCEPTUAL COST
1	Proposed Contact Station at Chalk Banks	\$3,200,300
2	Snagging Lumber River	\$500,000
3	Buck Landing Multi -Use Trailhead Development	\$3,500,600
4	Engineering Report and Bank Erosion at Chalk Banks Ramp	\$425,000
5	L- Bush Island Culvert replacement	\$106,250
6	L - Big Sandy Ridge Equestrian Trailhead	\$458,125
7	Misc. Maintenance projects	\$210,625
8	Proposed restroom at Chalk Banks	\$625,000
9	Proposed electrical extension at Chalk Banks campground	\$437,500
10	Internet connection improvements at Princess Ann	\$125,000
11	Pave Chalk Banks campground road	\$625,000
12	Chalk Banks campground improvements	\$312,500
	TOTAL	\$10,544,700
	FUTURE PROJECTS ALSO NEEDED	
13	Internet connection improvements at Chalk Banks	\$125,000
14	Proposed bridge to Princess Ann Expansion	\$625,000
15	Proposed Princess Ann Expansion	\$3,180,700
16	Trail improvements at Chalk Banks	\$125,000
17	Trail improvements at Princess Ann	\$125,000
18	L- Proposed ranger residence in middle section	\$375,000
	TOTAL FUTURE PROJECTS	\$4,555,700
TOTAL		\$15,100,400
**Planning estimated project cost does not include contingencies, design fee, nor escalation.		

BOND PROJECT DESCRIPTION

1. **Proposed Wire grass Contact Station:** A new contact station will provide gathering space for the local community and additional office space.

Scope of work includes:

- 4,471 square feet contact station with office space; public restrooms, picnic pavilion, and
- 177 including 6 accessible parking spaces,
- Wetland walkway,
- Ramp and concrete sidewalks.

The following staff are needed to adequately operate this facility:

- 1 superintendent;
- 5 law enforcement;
- 1 office assistant;
- 2 maintenance staff.



GMP PROJECT DESCRIPTIONS (CONTINUED)

All proposed projects must be submitted to the Natural Resources staff for Environmental Review

1. Proposed Contact station at Chalk Banks

Abandon the leased office space at Town of Wagram and construct a 3,300 Sq.Ft. contact station at Chalk Banks in order to provide safety, ranger visibility, education and resource management. An additional Administration personnel and two (2) ranger staff will be needed to manage this facility.

2. Snagging Lumber River

Severe tree debris was caused by two consecutive hurricane events (Hurricane Florence and Matthew) along a designated wild, scenic and recreational river. The removal of down trees from river bank to river bank will allow for flood mitigation. This will provide an open corridor for water to move downstream. In 2021, park staff worked approximately 400 man hours to clear, cut and remove tree debris. Additional ranger and maintenance staff are needed to provide a passable paddle way along the Lumber River. Coordination will be required between park and Natural resources staff will review the snagging areas and obtain necessary permits prior to clearing.



Tree debris within the Lumber River corridor causes obstacles for paddlers and effects the water levels

Critical sections includes:

- Lumberton area: from Kendric Road (McNeill Bridge NCWRC ramp) to NC 72 (High Hill NCWRC ramp).
- Boardman to Princess Ann access
- Princess Ann to Fair Bluff
- Chalk Banks access area to Hwy 401

3. Buck Landing Multi Use Trailhead Development

Buck Landing access will provide a satellite area for a multi use trail system for both equestrian and hikers.

Scope of work includes:

- Single Prefabricated vault toilet,
- Infrastructure,
- Ten (10) parking spaces,
- Site amenities, including picnic tables
- 4 miles of multi- use trails, and
- Overlook over Lumber River



This location will re-purpose existing infrastructure and construct a trail head and vault toilet.

GMP PROJECT DESCRIPTIONS (CONTINUED)

4. Engineering Report and Bank Erosion at Chalk Banks Ramp

A stream restoration engineer will evaluate and make recommendations for slope repairs at Chalk Banks. The Lumber River is a designated Federal and State river protected which mandates the specific natural, free-flowing conditions.

5. L- Bush Island Culvert replacement

The Bush Island access is located south of Princess Ann access and Sandy Ridge day use access. Currently, staff has to respond to illegal activity on park property adjacent to the inholding. Staff will work with NCDOT to replace the storm water measures.

Scope of work includes:

- Replacement of (4) -42” Diameter culverts,
- Grading and erosion control measures.

6. L - Big Sandy Ridge Equestrian Trailhead

This land dependent project will provide public access to Big Sandy Ridge along with 10 miles of equestrian trails. The access road will be widened in order to provide emergency response and horse trailers within a 50 ft wide easement. Natural resources staff will field locate woody goldenrod, a rare federally listed species, which is sensitive to impacts, prior to construction.

Scope of work includes:

- Site preparation,
- Grading,
- Storm water improvements,
- Erosion control measures,
- Wetland permitting,
- Widen land dependent existing driveway from 14 feet to 24 feet.
- Install entrance sign
- Prefabricated single vault toilet,
- Well,
- Equestrian wash down station; and
- Ten (10) equestrian spaces.



The existing culvert is rusted and cannot adequately divert water

Park staff will coordinate with NCDOT to complete the work.

GMP PROJECT DESCRIPTIONS (CONTINUED)

7. Misc Maintenance projects

This park needs routine maintenance on infrastructure and structures.

Scope of work includes:

- Upgrade roof on Princess Ann shelter;
- Upgrade transformer at Princess Ann office;
- Install 50 -wheel stops at Chalk Banks Parking lot;
- Upgrade phone system at Princess Ann park office;
- Install solar lighting system at Chalk Banks Entrance gate;
- Maintenance, Day Use area, Chalk banks camp sites;
- Princess Ann Entrance gate, campsites; and
- Princess Ann Day Use area.

8. Proposed restroom at Chalk Banks

A restroom is needed for local school groups for educational partnerships. Scotland, Robeson and Hoke county schools cannot plan field trips without restrooms for groups of 25-100 students.

9. Proposed Electrical extension at Chalk Banks Campground

The electrical line will be extended from the main entrance road to the existing Chalk Banks Campground to provide better camping experience.

10. Internet connection improvements at Princess Ann

Update Princess Ann office with digital communication for improved outreach, community engagement, improved park management, and emergency services communication. Basic services are a challenge without adequate power, wireless local area network, and ranger computer work stations. This access area needs hardwire internet service line.

11. Pave Chalk Banks Campground Road

Coordinate with NCDOT to widen 2000 linear feet from 12 feet wide to 20 feet wide to provide adequate emergency access.

12. Chalk Banks Campground improvements

Upgrade existing sites to provide 14 tent and trailer, and platform campsites.

Scope of work includes:

- Driveways,
- Impact pads and
- Site improvements.



Existing campground site at Chalk Banks

GMP PROJECT DESCRIPTIONS (CONTINUED)

Future Projects (also needed)

13. Internet connection improvements at Chalk Banks

Update Chalk Banks with digital communication for improved outreach, community engagement, improved park management, and emergency services communication. Basic services are a challenging without adequate power, wi-fi and ranger computer work stations.

14. Proposed bridge to Princess Ann expansion

In order to provide for emergency access to the north west section of Princess Ann, a 20 feet wide bridge and 100 feet span is needed for adequate emergency response time. At the time of construction, a prefabricated bridge could be more economical based on material cost. An environmental assessment will be done prior to design and construction.

15. Proposed Princess Ann Expansion

A 5 mile multi use loop trail system will provide an alternate trail system to the park headquarters. The Trail Specialist will make recommendations and set priorities for specific projects that are eligible for funding, design and construction.

Scope of work includes:

- Site work,
- Removal of former structure,
- Multi Use Trails - (5 miles)
- Environmental Permitting
- Overlook over Wildcat Lake

16. Trail Improvements at Chalk Banks

The trail specialist will make recommendations and set priorities for specific projects that are eligible for funding, design and construction.

Trail includes:

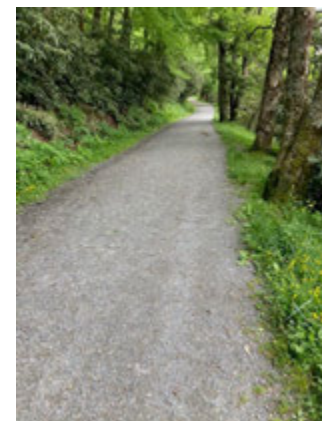
- Chalks Banks Trail - re-route 2,640 Lin. Ft.
- Boardwalk renovations

17. Trail Improvements at Princess Ann

The trail specialist will make recommendations and set priorities for specific projects that are eligible for funding, design and construction.

Trails include:

- Lumber River Track Trail
- Princess Ann Trail - connect to Lumber River expansion area



Proposed gravel trail



Princess Ann Trail needs repairs due to hurricane damage



GMP PROJECT DESCRIPTIONS (CONTINUED)

Future Projects (also needed)

18. L - Proposed ranger residence in middle section

In order to provide adequate response time to emergencies, a park ranger needs to be stationed in the middle section between Chalk Banks and Town of Lumberton.

PROJECT CONCEPT PLANS

GMP PROJECT #1 - PROPOSED CONTACT STATION AT AT CHALK BANKS



PROJECT CONCEPT PLANS

GMP PROJECT #2 - SNAGGING LUMBER RIVER

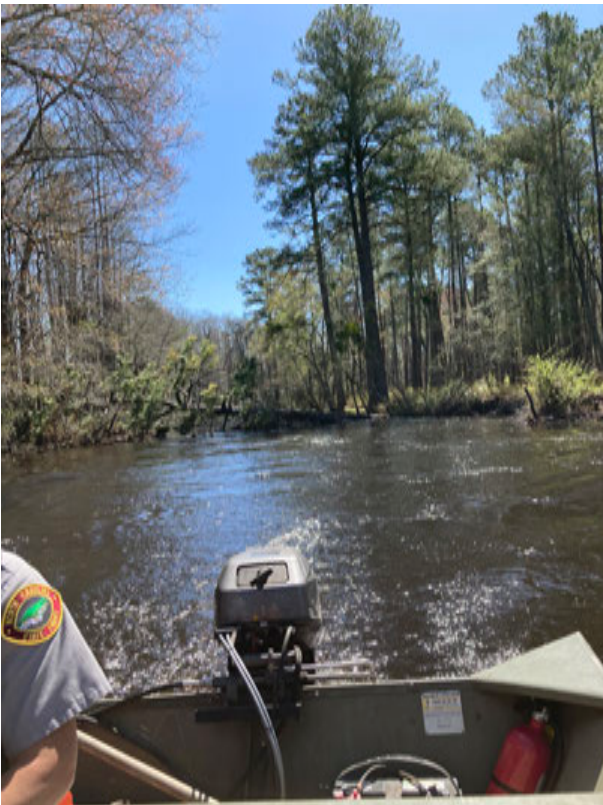


PROJECT CONCEPT PLANS

GMP PROJECT #2 - SNAGGING LUMBER RIVER

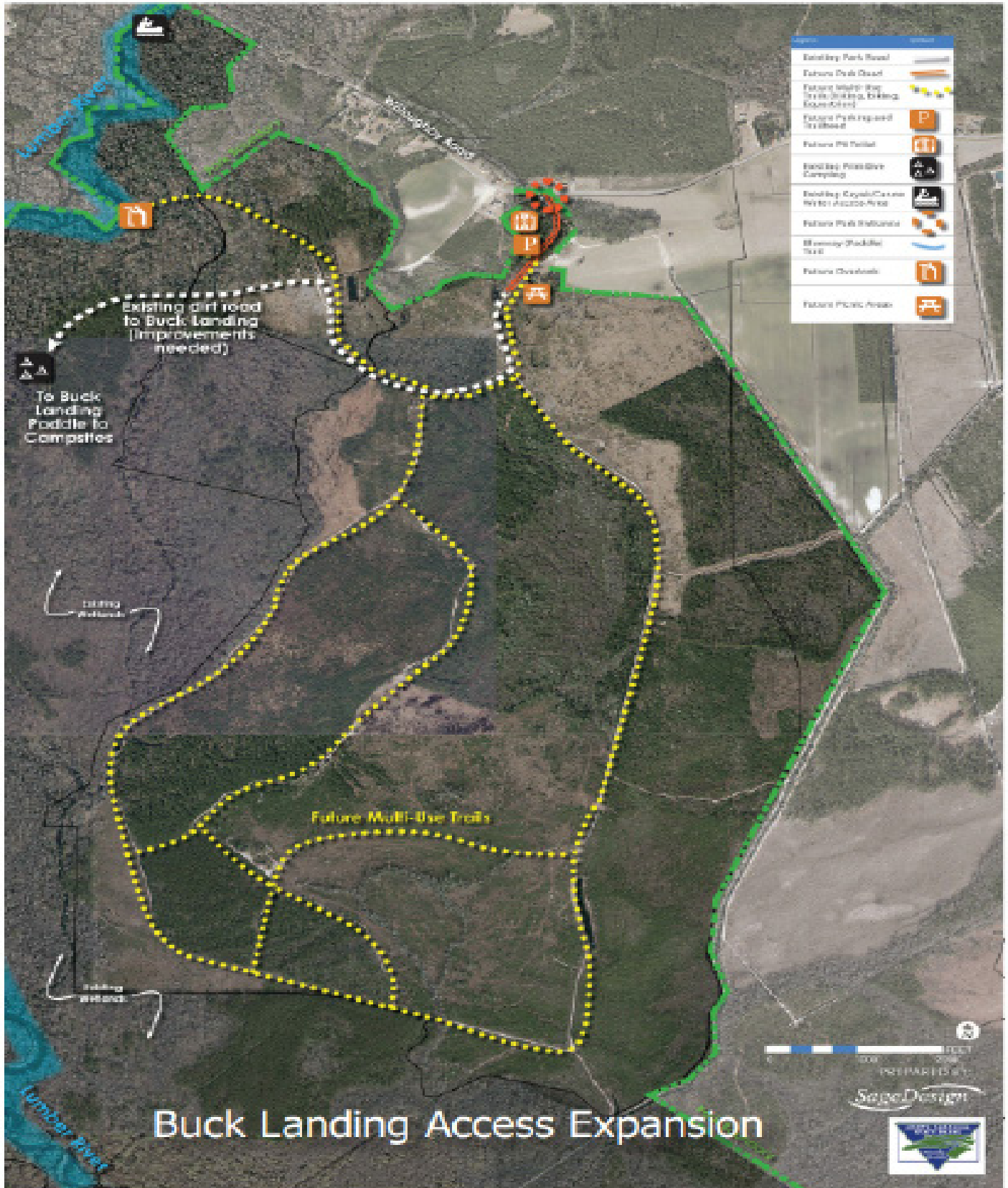
Critical sections include:

- Lumberton area: from Kendric Rd (McNeill Bridge - NCWRC ramp) to NC 72 (High Hill NCWRC ramp).
- Boardman to Princess Ann access
- Princess Ann to Fair Bluff
- Chalk Banks access area to Hwy. 401.



PROJECT CONCEPT PLANS

GMP PROJECT #3 - BUCK LANDING TRAIL DEVELOPMENT



PROJECT CONCEPT PLANS

GMP PROJECT #3- BUCK LANDING TRAIL DEVELOPMENT



The former logging roads will be re-used for multi use trail development



The proposed restroom will re use existing infrastructure, including electrical, well and septic field

PROJECT CONCEPT PLANS

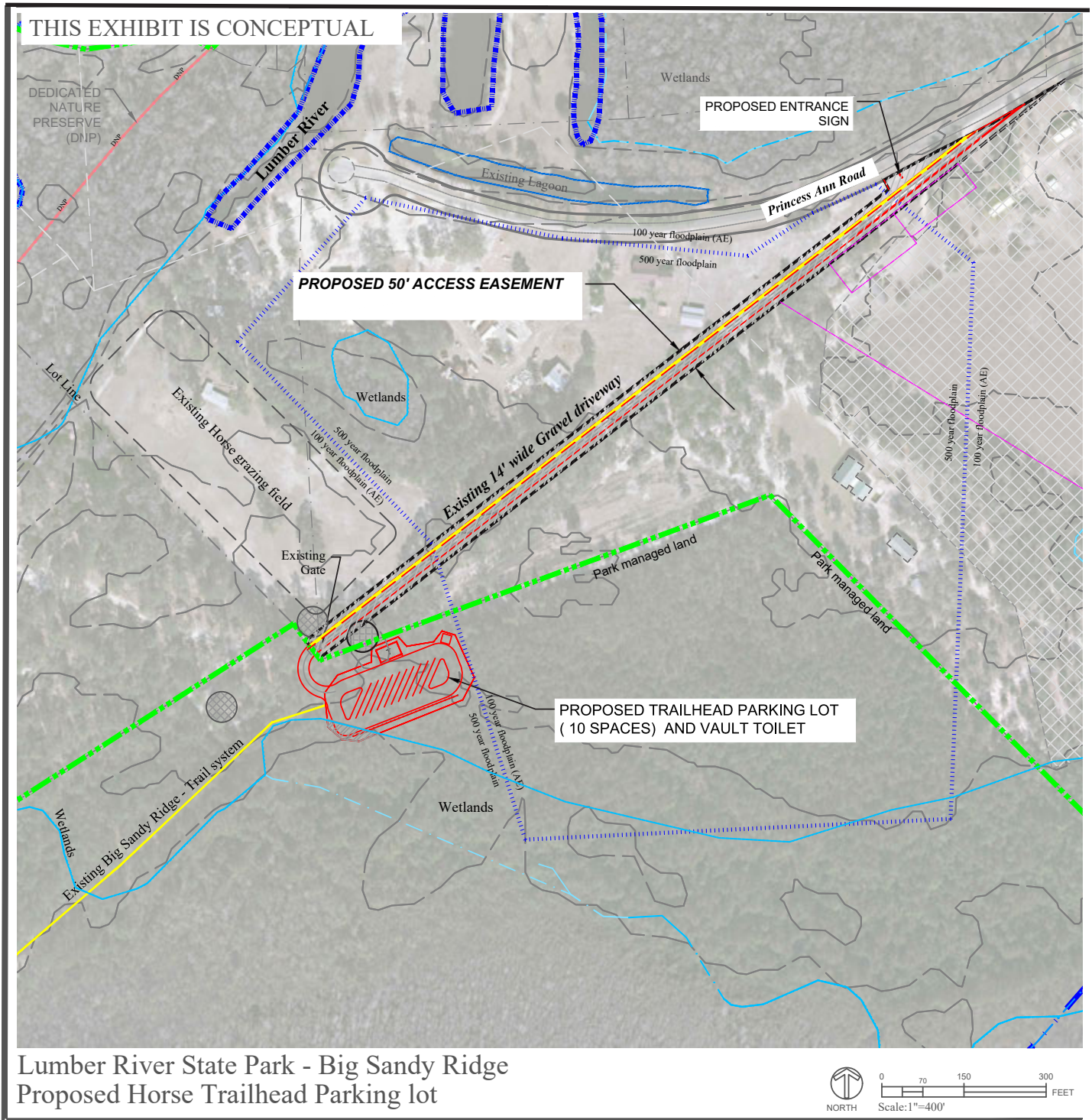
GMP PROJECT #4 - ENGINEERING REPORT AND BANK EROSION AT CHALK BANKS RAMP



The banks of the Chalk Banks access area are severely eroded and undercut. This section is part of the designated wild and scenic river corridor. A stream restoration study will evaluate and make recommendations. The banks of the Lumber River at Chalk Banks was caused by extreme weather events and velocity. Stream banks are subjected to erosion and scour by flowing water.

PROJECT CONCEPT PLANS

GMP PROJECT #6 - L - BIG SANDY RIDGE EQUESTRIAN TRAILHEAD



Widen access drive from 14 ft to 24 ft. and construct a 10 space trail head parking lot, vault toilet and wash down station

PROJECT CONCEPT PLANS

GMP PROJECT #6 - L - BIG SANDY RIDGE EQUESTRIAN TRAILHEAD



Existing land dependent driveway will be widened from 14 feet to 24 feet.



Location of the Proposed trail head parking lot will not disturb sensitive habitat

PROJECT CONCEPT PLANS

GMP PROJECT #6: MISC. MAINTENANCE PROJECTS



Install concrete wheel stops at the existing parking lot at Chalk Banks access area



Robeson and Hoke County are ranked in the top 5 most dangerous places to live in North Carolina. The installation of solar panel security lighting at Chalk Banks and Princess Ann Day- Use facilities will help reduce theft.

PROJECT CONCEPT PLANS

GMP PROJECT #8 - PROPOSED RESTROOM AT CHALK BANKS



PROJECT CONCEPT PLANS

GMP PROJECT #12 - CHALK BANKS CAMPGROUND IMPROVEMENTS



PROJECT CONCEPT PLANS

FUTURE GMP PROJECT #14 - PROPOSED BRIDGE TO PRINCESS ANN EXPANSION



PROJECT CONCEPT PLANS

FUTURE GMP PROJECT #14 - PROPOSED BRIDGE TO PRINCESS ANN EXPANSION



The construction methods need to limit impacts on Top of spoil. An environmental assessment will be done prior to construction.

View looking north across Mill hole Canal.



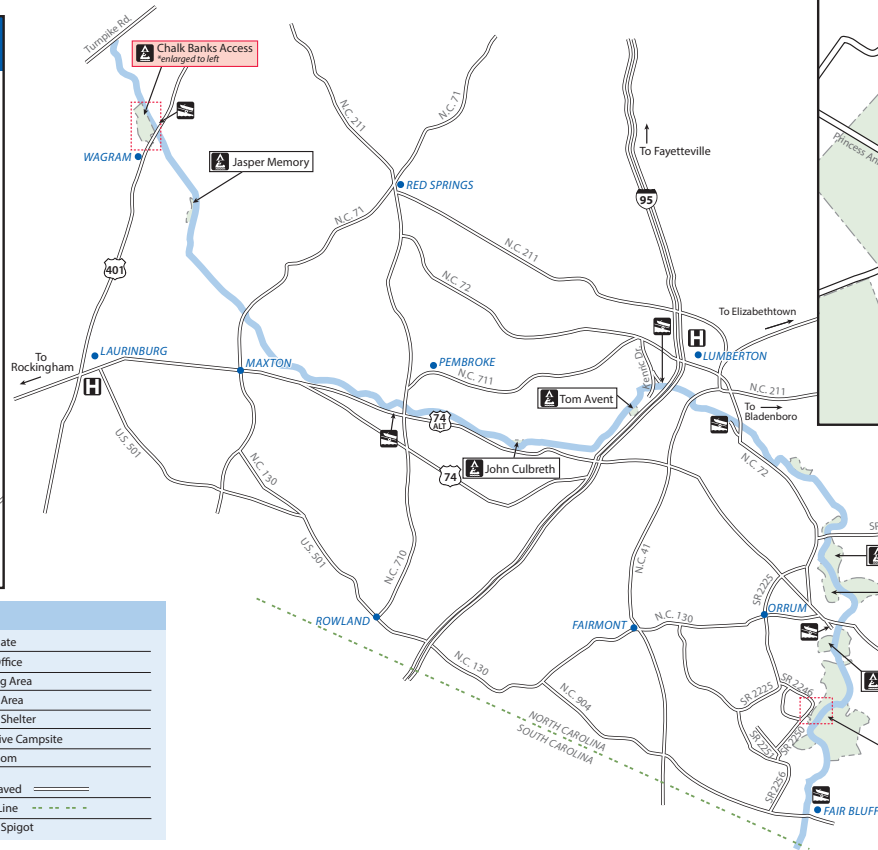
The Princess Ann Expansion bridge will provide adequate emergency response time to access over 4.70 miles of trails system.

PARK MAP

LUMBER RIVER STATE PARK

Chalk Banks Access
GPS: 34.898905, -79.354884

Princess Ann Access
GPS: 34.390023, -79.002225



LEGEND

Boat Ramp	Park Gate
Footpath	Park Office
Group Camping	Parking Area
Hiking Trail	Picnic Area
Hospital Emergency Dial 911	Picnic Shelter
Lumber River	Primitive Campsite
Observation Deck	Restroom
Paddle Access	Road
Paddle-In Camping	Paved
Park Boundary	State Line
	Water Spigot



THIS PAGE INTENTIONALLY LEFT BLANK