

A scenic view of a mountain valley. In the foreground on the left, a large, dark grey rock formation with visible cracks and textures dominates the frame. To the right, a dense forest of green trees covers a steep slope. In the background, a series of mountain peaks are visible, with the nearest ones in sharp focus and the more distant ones appearing hazy and blue. The sky is a pale blue with some light, wispy clouds.

Chimney Rock State Park General Management Plan

North Carolina Department of
Natural and Cultural Resources
Division of Parks and Recreation

Mountain Region
July 2024

PAGE INTENTIONALLY LEFT BLANK

TABLE OF CONTENTS

I.	Mission and Purpose.....	4
II.	History.....	6
	Significant and species of concern	7
III.	Themes and Inventory.....	9
	Facilities.....	12
	Trails.....	17
IV.	Planning.....	23
	Land Protection Plans.....	24
	Projects.....	26
	Appendix	47



I. MISSION AND PURPOSE

GENERAL MANAGEMENT PLANS:

The 1987 State Parks Act (G.S.143B - 135.40) requires each park to have an individual General Management Plan. As required, these plans seek to identify an individual parks purpose as a unit within the larger parks system and provide an analysis of the parks major resources and facilities. The GMP also identifies current and future needs of the park and prioritizes a list of proposed projects intended to meet those identified needs. These plans are considered living documents, recognizing the various and dynamic factors which influence the planning process. Each park's GMP is scheduled to be revisited every five years, or sooner if needed, to reflect the direction and vision of the State Parks Division.

N.C. STATE PARKS MISSION:

The 1987 State Parks Act also defines the purpose of the state parks system. It establishes that: The State of North Carolina offers unique archaeological, geologic, biologic, scenic and recreational resources. These resources are part of the heritage of the people of this State. The heritage of a people should be preserved and managed by those people for their use and for the use of their visitors and descendants.



OUR MISSION

The North Carolina
Division of Parks and Recreation
exists to inspire all
its citizens and visitors through
conservation, recreation and education.

CONSERVATION

To conserve and protect representative examples of North Carolina's natural beauty, ecological features, recreational and cultural resources within the state parks system;

RECREATION

To provide and promote safe, healthy and enjoyable outdoor recreational opportunities throughout the state; and

EDUCATION

To provide educational opportunities that promote stewardship of the state's natural and cultural heritage.





I. MISSION AND PURPOSE

PARK OVERVIEW:

Chimney Rock State Park is located in the western region of Rutherford County 97 miles west of Charlotte and 25 miles east of Asheville. This is a destination mountain park, encompassing both sides of Hickory Nut Gorge and named after the 315 foot granite outcropping located on the summit of Chimney Rock Mountain. Recreation focuses on hiking trails to include an elevator inside of Chimney Rock Mountain that takes visitors to the top of the Chimney. The remaining park land is used for watershed and scenic protection to preserve the 404 foot Hickory Nut Falls and Broad River for an outstanding water resource.



Three sections are integrated within the park; including: The Chimney Rock Access, Rumbling Bald, and Eagle Rock. Over 90% of visitors access this park thru the Chimney Rock Attraction while the other 10% of visitors access the park through the Rumbling Bald and Eagle Rock access areas.

PARK PURPOSE:

Some of North Carolina's most dramatic mountain scenery is found at Chimney Rock State Park, with the signature 315-foot spire overlooking Hickory Nut Gorge and Lake Lure. Admission is charged at the principal Chimney Rock Access, though the nearby Rumbling Bald Climbing Access is admission-free and offers one of the park's ten (10) trails. Visiting Chimney Rock Access offers opportunities for picnicking and hiking on trails that range from child-friendly nature explorations to moderately strenuous treks to the top of Chimney Rock Mountain and to the edge of Hickory Nut Falls. Concessions and gift shops are available. The Rocky Broad River is a destination for trout anglers. Other access areas into the park—now encompassing more than 6,956 acres—are to be developed.

This park was the first joint partnership with the Chimney Rock, LLC and State Parks within the division. This has created a unique opportunity for staffing, educational practices, stewardship, visitor management and park experience.



Traditionally, North Carolina State Parks are named after a dominant natural feature when the park is established. This was changed from Hickory Nut Gorge State Park to Chimney Rock State Park.

II. HISTORY

In 2005, the N.C. General Assembly authorized a new state park in the scenic Hickory Nut Gorge area of western Rutherford and the surrounding Polk, Henderson and Buncombe Counties. Later that year, the first tract of land to form the state park was purchased. Since then many more acres have been added. The most notable was the 2007 transfer of Chimney Rock Park, a private nature park surrounding the striking 315-foot spire on the gorge's southern side, into the expanding park.



Chimney Rock State Park is focused on the backcountry trail system experience of Rumbling Bald and Eagle Rock Access

II. SIGNIFICANT AND SPECIES OF CONCERN

Chimney Rock State Park Dedicated Nature Preserve contains one of the largest concentrations of rare species on the Blue Ridge escarpment. These are listed in the appendix section. This diverse collection includes species disjunct from higher elevation areas as well as some of the rarest plants in the state. Of particular note is one of the world's largest populations of white irisette (*Sisyrinchium dichotomum*), an endangered, narrowly endemic species. Also highly significant is the presence of small whorled pogonia (*Isotria medeoloides*), a federally Threatened and state Endangered orchid. The greatest number of rare plant species are associated with rock outcrops (Granitic Domes and Cliffs), but many species are scattered within the Montane Oak -Hickory Forests of the site, or even occur along old road beds in the forests. A large number are associated with the relatively high pH soils. These areas of rich soils make up only a minority of the preserve, but support many of the rare plants.



The white irisette, is one of the rarest plants in the State of North Carolina. Chimney Rock State Park Dedicated Nature Preserve contains one of the largest concentrations of rare species on the Blue Ridge escarpment.

27 Watch List plants are also present, including ginseng (*Panax quinquefolius*) and several species of Trillium (*Trillium spp.*). Additional rare plant species have been reported from the site historically, but have not been confirmed in recent years, including fen orchid (*Liparis loeselii*), Carolina saxifraga (*Saxifraga caroliniana*), and a liverwort (*Plagiochila ludoviciana*).

Chimney Rock State Park Dedicated Nature Preserve (DNP) supports several high quality examples of natural communities. Communities in this area are strongly influenced by bands of amphibolite on the ridges and upper slopes. Of particular note are Low Elevation Granitic Domes, Low Elevation Rocky Summit, Montane Red Cedar Hardwood Woodland, and Montane Mafic Cliff found along the steep north- and east-facing summits of the mountains. These open rocky communities are rare in the state, and support many of the rare plant species.

Small patches of Carolina Hemlock Bluffs are found on steep, north-facing slopes near ridge lines of World's Edge and Sugar loaf Mountains. Additional common communities include Acidic Cove Forest, Chestnut Oak Forest, Montane Oak-Hickory Forest, Pine-Oak/Heath, and Rich Cove Forest. Small patches of old-growth forests and Low Elevation Seeps are present.

II. SIGNIFICANT AND SPECIES OF CONCERN

Threatened and Endangered species:

Scientific Name	Common Name	NC Status	USA Status	S Rank	G Rank	Taxonomic Group
<i>Plethodon yonahlossee pop. 1</i>	Crevice Salamander	SC		S2	G4 T1T2Q	Amphibian
<i>Certhia americana</i>	Brown Creeper	SC		S3B, S5N	G5	Bird
<i>Falco peregrinus anatum</i>	American Peregrine Falcon	E		S1B, S2N	G4T4	Bird
<i>Haliaeetus leucocephalus</i>	Bald Eagle	T	BGPA	S3B, S3N	G5	Bird
<i>Setophaga cerulea</i>	Cerulean Warbler	SC		S2B	G4	Bird
<i>Gymnoderma lineare</i>	Rock Gnome Lichen	E	E	S3	G3	Lichen
<i>Myotis leibii</i>	Eastern Small-footed Bat	SC		S2	G4	Mammal
<i>Myotis septentrionalis</i>	Northern Long-eared Bat	T	T (PE)	S2	G2G3	Mammal
<i>Myotis sodalis</i>	Indiana Bat	E	E	S1S2	G2	Mammal
<i>Crotalus horridus</i>	Timber Rattlesnake	SC		S3	G4	Reptile
<i>Adlumia fungosa</i>	Climbing Fumitory	SC-V		S2	G4	Vascular Plant
<i>Cardamine dissecta</i>	Dissected Toothwort	SC-V		S2	G4	Vascular Plant
<i>Carex pedunculata var. pedunculata</i>	Longstalk Sedge	SC-V		S2	G5 TNR	Vascular Plant
<i>Celastrus scandens</i>	American Bittersweet	E		S2	G5	Vascular Plant
<i>Isotria medeoloides</i>	Small Whorled Pogonia	T	T	S1	G2G3	Vascular Plant
<i>Liatris aspera</i>	Rough Blazing-star	T		S1	G4G5	Vascular Plant
<i>Liparis loeselii</i>	Fen Orchid	E		S1	G5	Vascular Plant
<i>Nabalus albus</i>	Northern Rattle-snake-root	SC-V		S2	G5	Vascular Plant
<i>Packera millefolium</i>	Divided-leaf Ragwort	SC-V		S2	G3	Vascular Plant
<i>Primula meadia</i>	Shooting-star	SC-V		S2S3	G5	Vascular Plant
<i>Sisyrinchium dichotomum</i>	White Irisette	E	E	S2	G2	Vascular Plant
<i>Trillium simile</i>	Sweet White Trillium	SC-V		S2	G3	Vascular Plant
<i>Vandenboschia boschiana</i>	Appalachian Filmy-fern	E		S1	G4	Vascular Plant



The longstalk Sedge (*Carex pedunculata*) is a State concerned- Vascular Plan , (Sc - V). Habitats can be threatened or endangered due to various factors such as habitat destruction due to human activities.



III. THEMES AND INVENTORY (CONTINUED)

THEMES:

The significant archaeological, geologic, scenic, recreational and biological resources of North Carolina should be represented in the State Park system. These resources, as cited in the State Parks Act, are divided into sub-categories called resource “themes”. There have been 108 themes identified that should be protected to preserve representative examples of unique resources. For this General Management Plan, only themes that are of high to moderate significance to Chimney Rock State Park are shown.

As of 2024, Chimney Rock State Park protects 23 State and Federally protected species, 49 Significantly Rare species, 38 Watch list species, and 22 natural community types.

CHIMNEY ROCK STATE PARK AREA THEME TABLE

THEME TYPE	THEME	CHIMNEY ROCK STATE PARK SIGNIFICANCE	STATE PARKS SYSTEM REPRESENTATION
Biological	Low Elevation Cliffs and Rock Outcrops	High	Moderate
Biological	Montane Oak Forest	High	Adequate
Biological	Mountain Cove Forests	High	Little
Biological	Piedmont and Mountain Flood-plains	High	Little
Biological	Upland Seepages and Spray Cliffs	High	Moderate
Geological	Caves, Sinks and Springs	High	None
Geological	Cliffs	High	Adequate
Geological	Dissected Uplands	High	Adequate
Geological	Exfoliation Outcrops	High	Adequate
Geological	Faults, Joints, and Related Features	High	Little
Geological	Gorges, rapids waterfalls	High	Adequate
Geological	Intrusion	High	Adequate
Geological	Mass Wasting Features	High	Little
Geological	Unusual Rock Types	High	None

III. THEMES AND INVENTORY (CONTINUED)

THEME TYPE	THEME	CHIMNEY ROCK STATE PARK SIGNIFICANCE	STATE PARKS SYSTEM REPRESENTATION
Scenic	Caves/Cliffs	High	Moderate
Scenic	Forests	High	Moderate
Scenic	Gorges	High	Moderate
Scenic	Rock Outcrops	High	Adequate
Scenic	Scenic Vistas	High	Moderate
Scenic	Waterfalls	High	Adequate

*See the System wide Plan for references to Theme and Inventory terms. Themes have both actual and “potential” future needs to be at a park.



Hickory Nut Gorge and waterfall



Scenic Vistas



Cliffs of Hickory Nut Gorge

III. THEMES AND INVENTORY (CONTINUED)

Inventory:

While Chimney Rock State Park is moderately developed and is modest in size, its visitation has grown from 371,276 in 2020 to over 414,560 in 2023. Due to the proximity from Asheville and the metropolitan city of Charlotte, this park has become popular.

Chimney Rock State Park focus is on the back county trail system and the unique geological features. Ensuring our facilities are of adequate size and numbers, and that they are good operable condition helps us to provide quality visitor experiences. The following section is an inventory of the park facilities and trails.

Facility Inventory:

Chimney Rock was established in 1885 and much of the infrastructure was built by the Morse family. Due to the age and heavy visitor use, numerous facilities, including an elevator, and infrastructure systems are showing their age. The inventory chart explains the park staffs perceived condition of the structures. *See Exhibit A.*

Ensuring our facilities are adequate for current and future visitation, and that they are in good operable condition helps us to provide quality and safe visitor experiences. The follow section inventories the parks facilities and trails.

Trails Inventory:

Chimney Rock State Park provides 5.15 miles of hiking trails and 1 mile of mountain bike trails for a variety of challenges ranging from beginner to advanced. Several timber staircases were removed due to extensive use and age, and replaced with 491 steel framed steps. The upper stairs needs to be updated to exclamation point staircase.



Park office and maintenance yard is too small for the growing staffing needs and equipment storage



The original elevator dates back to 1930's. The mechanics, transformer and motor has been replaced in the past 3 years



FACILITY AND TRAILS INVENTORY

EXHIBIT A:

NC STATE PARKS - FACILITY INVENTORY SPREADSHEET				
State Park Unit(Alpha Code):		CHRO	Park Area(If Applicable): Chimney Rock State Park	
			Date(MM/YY):	2021
Public Buildings	Unit	Total #	Condition	Repairs needed(If Applicable)
Village Restrooms	BLDG	1	Fair	Leased to Chimney Rock Village, managed by Chimney Rock, LLC
Old Rock Café	BLDG	1	Good	Project in place to renovate floor to bring it to good condition
East Guard Shack	BLDG	1	Good	Renovated 2020, to become an information/interpretive center.
West Guard Shack	BLDG	1	Good	Renovated in 2020, to become an information/interpretive center.
Concessionaire Office	BLDG	1	Fair	Older building; Possible asbestos
State Park Office	BLDG	1	Fair	Shack turned to office
Ticket Plaza	BLDG	1	Good	
Classroom	BLDG	1	Good	Siding being replaced in 2020
Meadows Restrooms	BLDG	1	Good	
Pavilion	BLDG	1	Fair	Roof replaced in 2021, insect damage on structure
Interpretive Center (Grady's trailer)	BLDG	1	Good	Small mobile cabin structure on blocks
Cliff Dwellers	BLDG	1	Good	
Upper Parking Restroom Bldg. (near Chimney)	BLDG	1	Good	
Sky Lounge	BLDG	1	Good	May have some foundation issues. Currently under assessment with Engineering consultant to review
Rumbling Bald Vault Toilets	BLDG	1	Good	
Staff Buildings	Unit	Total #	Condition	Repairs needed(If Applicable)
Concessionaire Maintenance	BLDG	1	Fair	Old shack
Concessionaire Warehouse	BLDG	1	Good	
State Park Office Pump House (#2)	BLDG	1	Good	
Main Pump House	BLDG	1	Fair	
Lodge	BLDG	1	Fair	1920's building, no power/water/sewer-determining future use

FACILITY AND TRAILS INVENTORY (CONTINUED)

Infrastructure	Unit	Number	Condition	Repairs needed(If Applicable)
Water/Well-Main Pump House	SITE	1	Fair	Water lines above ground
Water/Well-Pump Housed 2	SITE	1	Fair	
Septic Field-Meadows	SITE	1	Fair	Not large enough
Septic Field- Cliff Dwellers	SITE	1	Poor	Leaking into road project to connect into Town of Lake Lure sewer system
Electrical	SITE		Good	Upgraded during elevator project
Generator for elevator	SITE	1	Good	Regular maintenance
Internet at office	SITE		Good	
Internet at Bat Cave office	SITE		Good	
Internet at Worlds Edge	SITE		Fair	Needs to be updated.
Attraction road	SITE		Poor	Six (6) spots of possible failure. Engineer is looking into the issue.
Parking lots	SITE		Poor	Repairing Cliff Dwellers, Concessionaire office & warehouse have storm drainage issues.

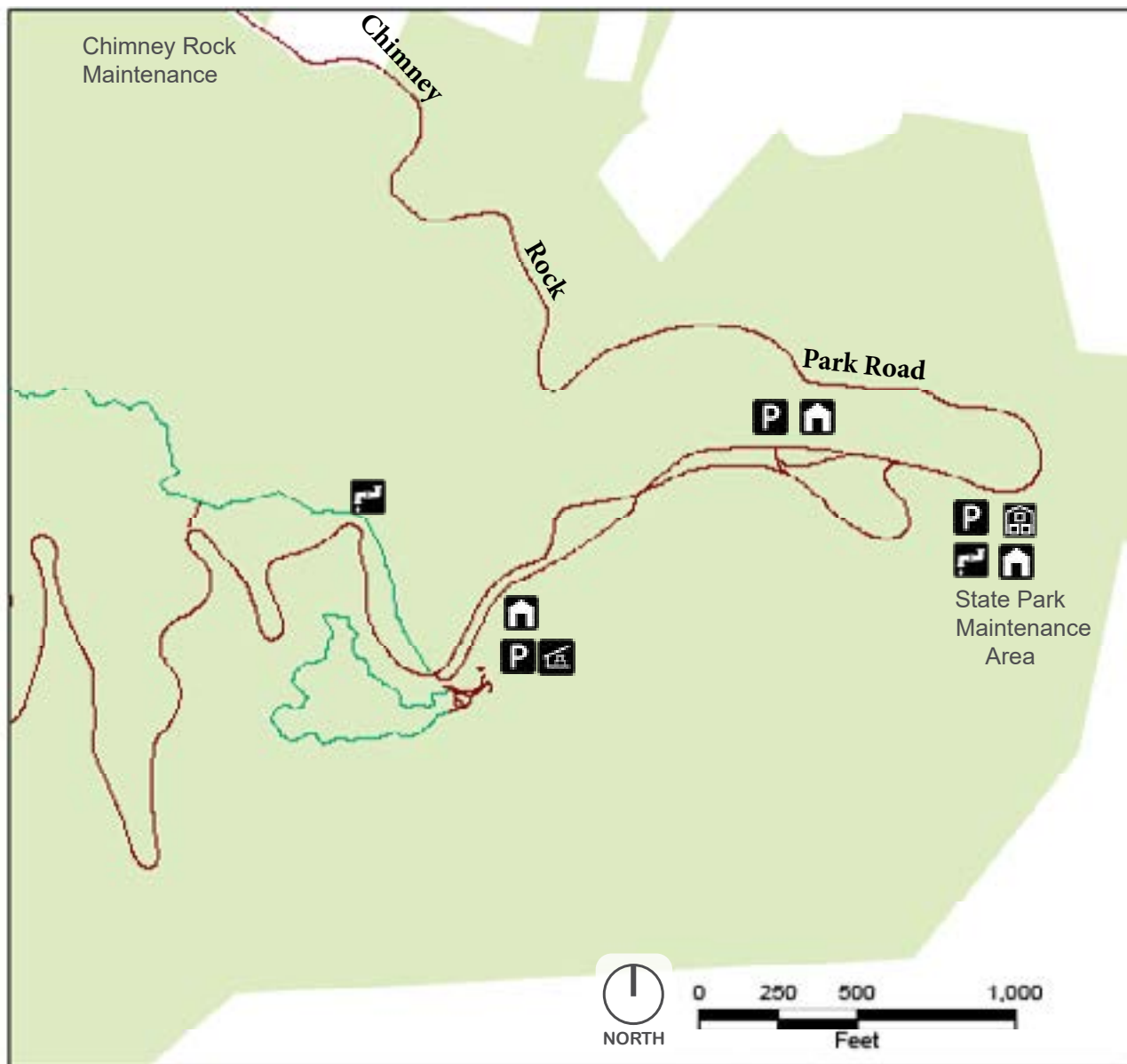
ADDITIONAL NOTES:

Chimney Rock State Park was established in 2007. It has four access; the Chimney Rock Attraction, Rumbling Bald Climbing Access, Worlds Edge, and Eagle Rock Access. The Chimney Rock Attraction including the ticket plaza and all retail shops/buildings is managed by Chimney Rock Management, LLC. The North Carolina Division of Parks and Recreation oversees the concessionaire contract and manages the other two accesses along with more than 7,100 acres in Hickory Nut Gorge for Chimney Rock State Park.



Staircases have been upgraded to meet standard building practices using steel and timber construction methods

FACILITY INVENTORY - ATTRACTION/ MAINTENANCE AREA

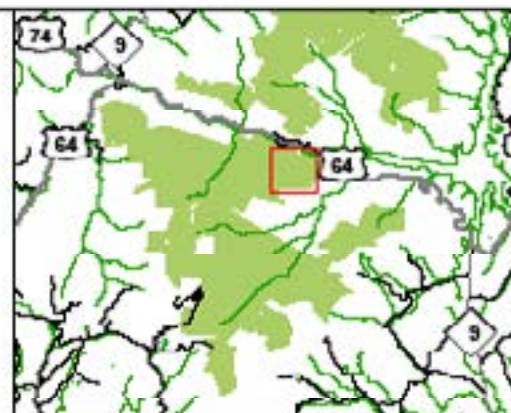


Chimney Rock State Park Facility Inventory

State Park Unit

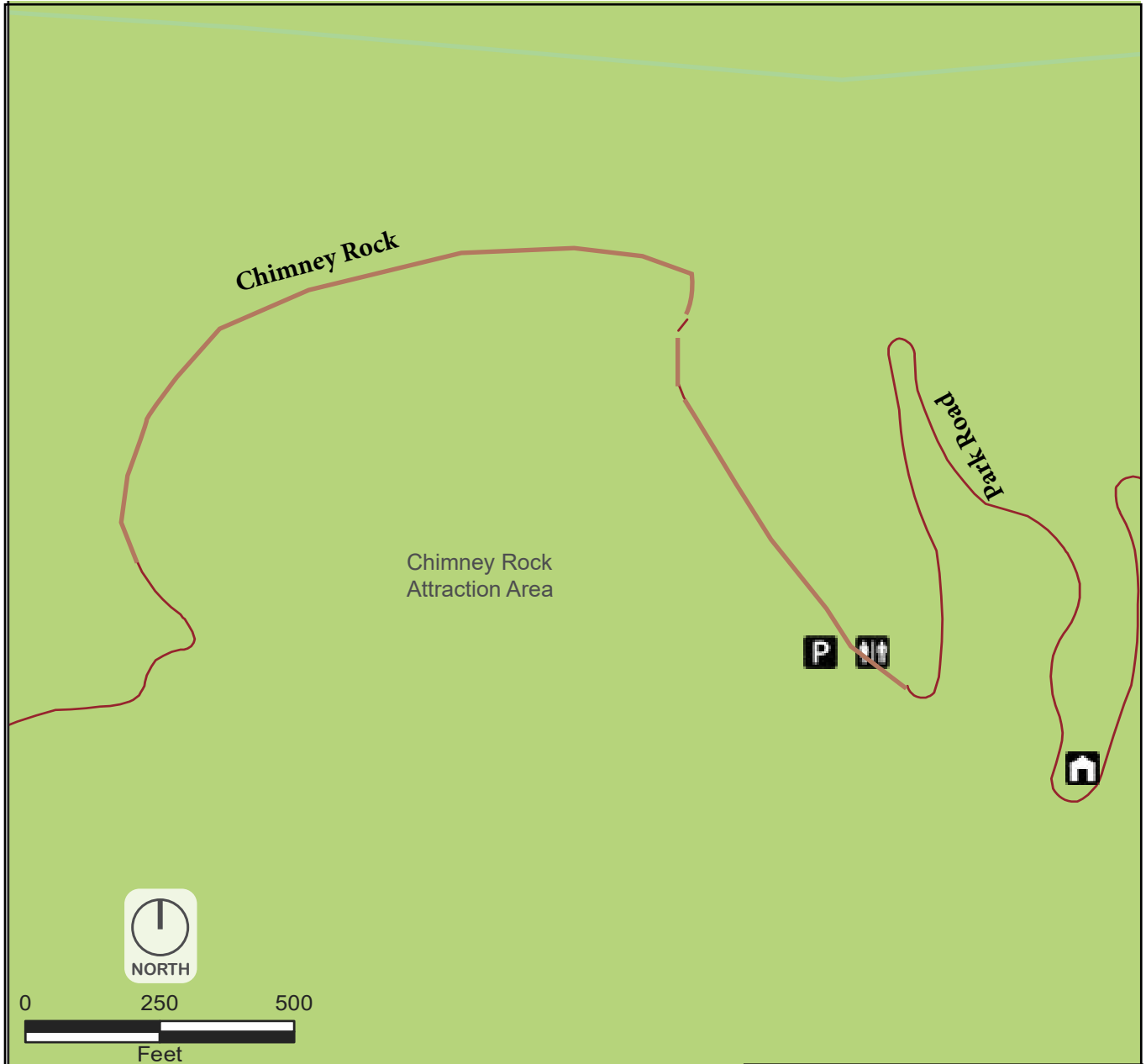
Attraction/ Maintenance Area

MAY 2024



- | | | | |
|--|--------------|--|------------------|
| | Well house | | Restroom |
| | Shed | | Storage Building |
| | Parking Area | | Picnic Shelter |
| | Classroom | | |

FACILITY INVENTORY - UPPER ATTRACTION AREA






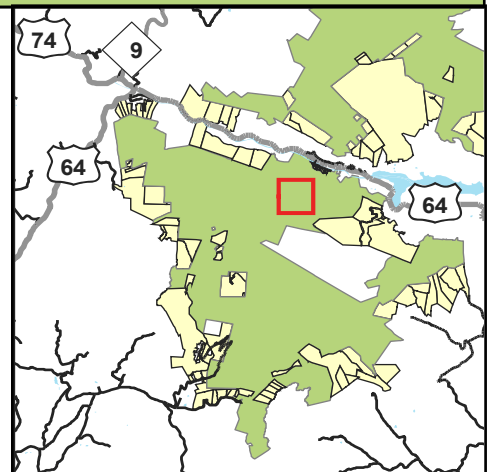
Chimney Rock State Park Facility Inventory

Upper Attraction Area

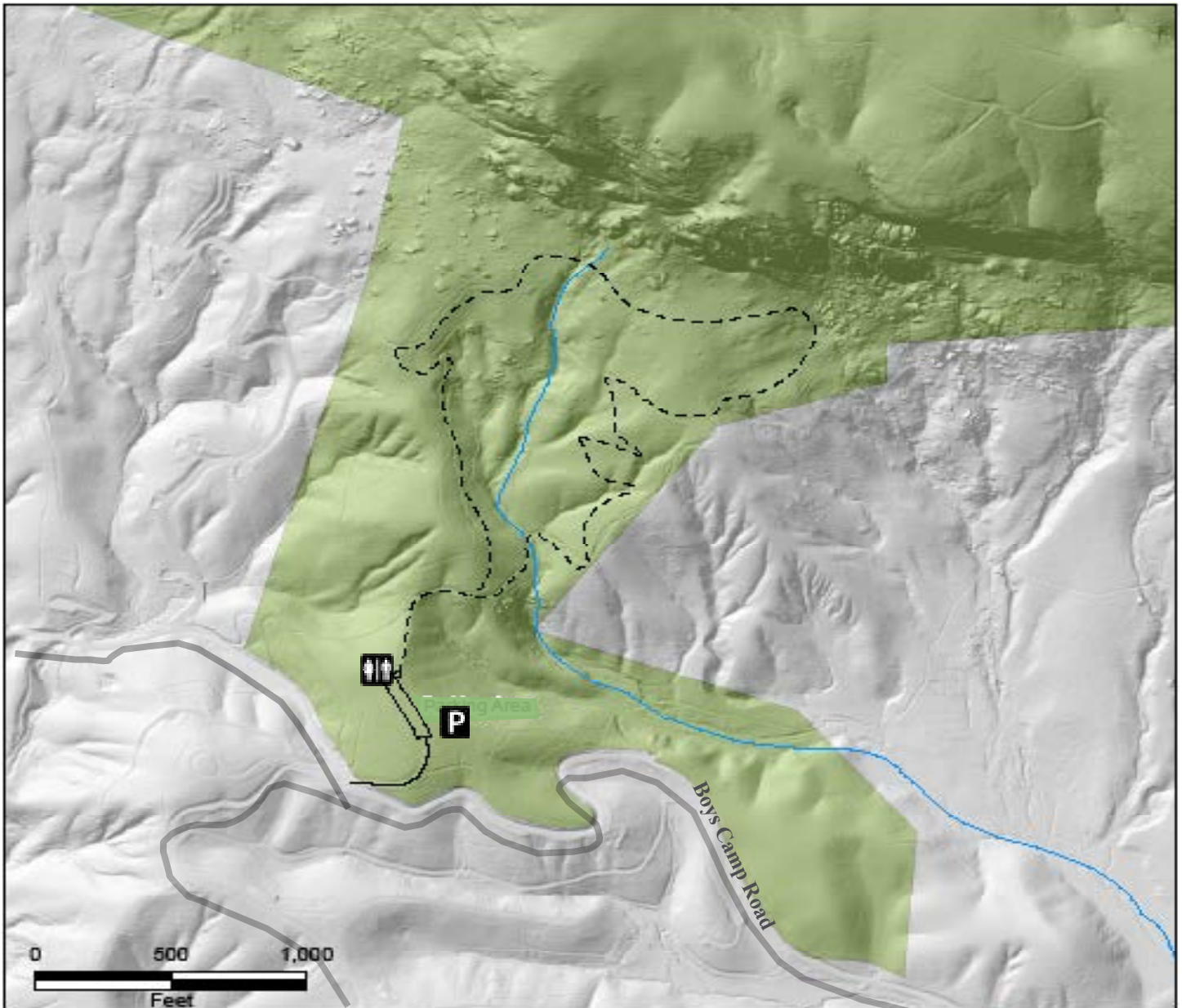
MAY 2024

 State Parks Unit

-  Restrooms
-  Parking Area
-  Lodge



FACILITY INVENTORY - RUMBLING BALD AREA



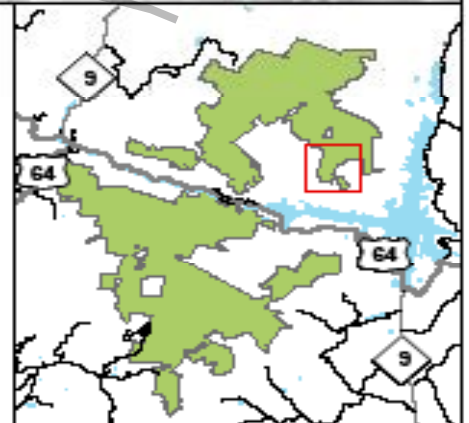
Chimney Rock State Park State Park Facility Inventory

Rumbling Bald Area

MAY 2024



- Trails
- Road - Paved
- Road - Unpaved
- Facilities
- State Park
- Restrooms
- Parking Area





TRAIL INVENTORY - ASSESSMENT

Often, the most popular and heavily used trails in our parks are the most impacted. A method was developed to take a simple survey of trail popularity and condition in each state park based on observations and information reported by the superintendent. Values were assigned for trail popularity and trail condition with a description provided for each value. Superintendents were requested to fill out the two values for each park trail. This resulted in a final “Trail Score” to determine the priority that should be assigned for maintenance, reroutes or redesign of each trail. The results from the survey generally support that the most popular trails have the most maintenance needs. Using this “Trail Score” to determine the priority of trail projects at a park will allow the Division to improve the visitor experience for the largest number of trail users.

Status	Description
1	Good condition/some routine trail maintenance required
2	Moderate trail maintenance required
3	Heavy erosion in places and/or unsustainable grades.
4	Trail closed due to erosion, damage, or other reasons. Make comments on closure reason.
Popularity	Description
4	Single most popular trail in the park w/ most visitors hiking this trail
3	Very popular trail with heavy usage in the park
2	Moderate usage by park visitors but other trails in the same park are more popular
1	Very little traffic overall or compared to other trails in the same park

TRAIL NAME	USE	SURFACE	WIDTH	Blaze	Status	Popularity	Priority Score	Comments
Exclamation Point	Hike	Native	2 FT	None	3	3		Structure Issues
Four Seasons Trail	Hike		2	None	3	2	5	
Great Woodland Adventure Trail	Hike		2	None	2	2	4	
Hickory Nut Falls Trail	Hike		2'	None	1	3	4	
River walk	Hike		2'	None	1	3		
Rumbling Bald Trail	Hike		2	Orange Circle	1	2	3	
Skyline Trail	Hike		2	Blue Diamond	1	2	3	
The Outcroppings Trail	Hike		2	None	1	4	5	
Tunnel Trail	Hike	Native	2	White Triangle	1	1	2	New trail, not known by many
Weed Patch Mountain Trail	Hike Bike	Native	2	Red Circle	1	1	2	New trail, not known by many

TRAIL INVENTORY (CONTINUED)

TRAILS: Chimney Rock State Park offers 10 trails for hikers to explore for interpretation and back country experience. Six (6) of the 10 trails are located within the fee based Chimney Rock access.

Chimney Rock:

Exclamation Point Trail: This 0.60 mile round trip strenuous trail starts at the Chimney Exclamation Point Trail connects paths with staircases to bring hikers to the edge of Exclamation Point at elevation 2,480 feet.



Exclamation Point Trail

Four Seasons Trail: This 1.40 mile round trip corridor at Chimney Rock access is a strenuous trail through the hardwood forest and picturesque boulders gives hikers many opportunities to view the natural flora and fauna of the park.



Four Seasons Trail

Great Woodland Adventure Trail: This 0.40 mile loop interpretive trail, teaches hikers about the animal residents of Chimney Rock State Park through interactive sculptures and displays.

Hickory Nut Falls Trail: This 1.40 mile round trip moderate trail leads to the base of the 404 foot tall waterfall, the gently sloping trail follows the side of Hickory Nut Gorge and has dramatic view of the towering cliffs above.



Hickory Nut Falls Trail

Outcroppings Trail: This 0.40 mile round trip moderate trail starts at Chimney Rock access. For park visitors that climb to the top of Chimney Rock itself, the Outcroppings Trail offers a series of staircases and lookout points threaded through a near-vertical boulder field.



Outcroppings Trail

Riverwalk Trail: This 0.10 mile round trip easy trail starts at Chimney Rock village and leads visitors along the Rocky Broad River.

Skyline Trail: This 1.10 mile one-way moderate trail starts at the Chimney Rock access. The trail starts at Exclamation Point and guides visitors even higher in elevation to Peregrine Point at 2,640 feet. After gazing across and into scenic Hickory Nut Gorge, visitors can continue their woodland hike to Falls Creek, which begins its 404-foot plunge as Hickory Nut Falls.



Riverwalk Trail

TRAIL INVENTORY (CONTINUED)

Rumbling Bald Access:

Rumbling Bald Trail: This 1.50 mile loop trail starts at the Rumbling Bald parking lot located off Boys Camp Road between Chimney Rock and Lake Lure. The trail loop trail meanders through a hardwood forest along the south face of Rumbling Bald Mountain, revealing large boulder fields and the base of the cliff areas. The trail head follows the orange trail blazes through the bouldering areas, past the cliff base, and back to the Rumbling Bald parking area.

Eagle Rock Access:

Tunnel Trail: This 0.15 mile one-way strenuous trail starts at the Eagle Rock Parking area. The Tunnel Trail spurs off the Weed Patch Mountain Trail near Eagle Rock. It showcases stone staircases, which bring hikers up and through a tunnel created by a huge granite rock slab leaning at the base of Eagle Rock.



Skyline Trail

Weed Patch Mountain Trail: This 8.50 mile one way strenuous trail starts at the Eagle Rock parking lot. *(One (1) mile on park managed property and 7.50 miles on Town of Lake Lure managed land)*. The trail connects Eagle Rock in Chimney Rock State Park to Buffalo Creek Park near Rumbling Bald Resort. It traverses rugged mountain terrain through a remote wilderness area. The trail is designed for both hiking and mountain biking groups.



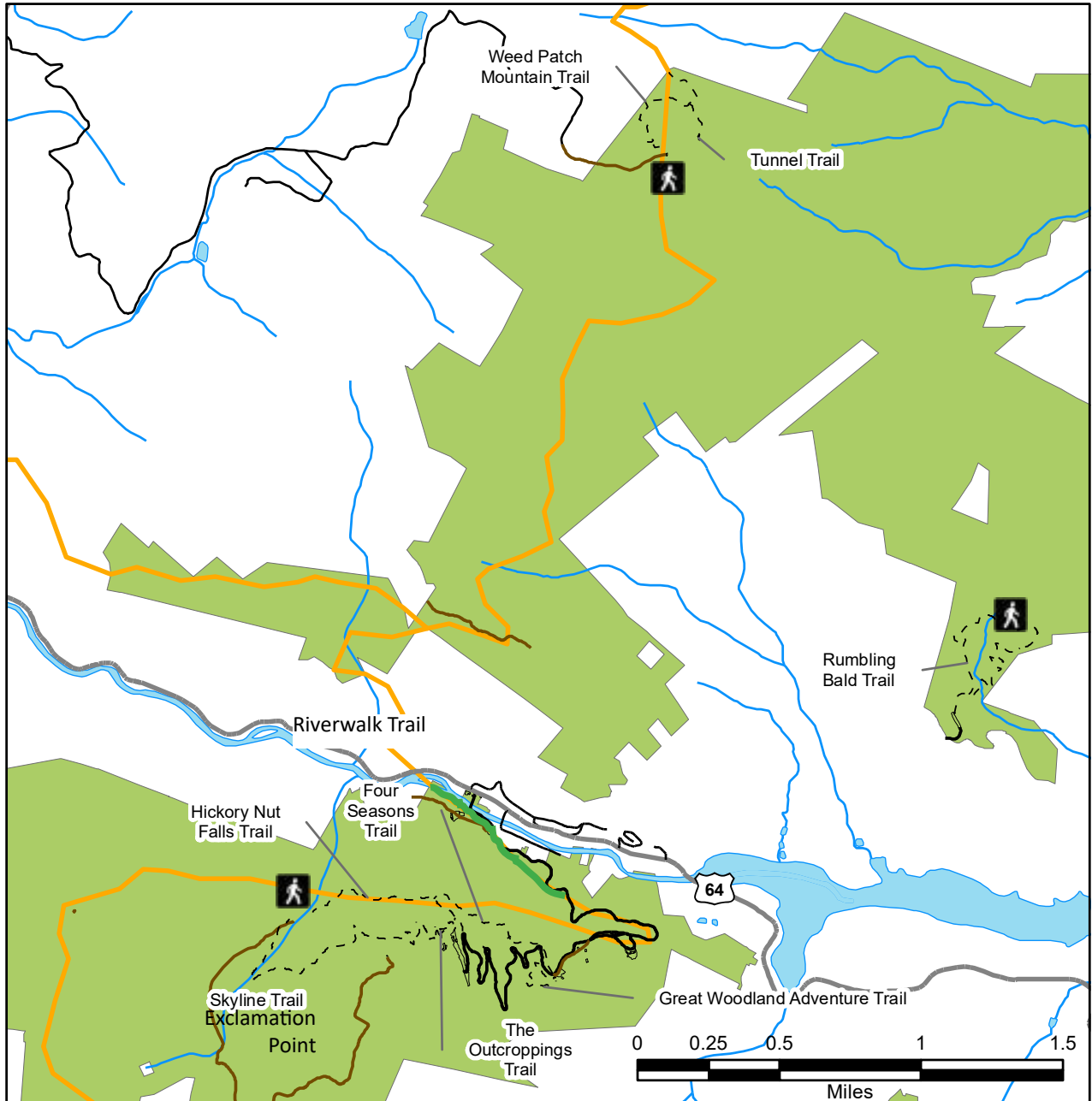
Weed Patch Mountain Trail



TRAIL INVENTORY (CONTINUED)

TRAIL INVENTORY	HIKING
<i>CHIMNEY ROCK ACCESS:</i>	
Exclamation Point Trail	0.60
Four Seasons Trail	1.40
Great Woodland Adventure Trail	0.80
Hickory Nut Falls Trails	1.40
Outcroppings Trail	0.40
Riverwalk Trail	0.20
Skyline Trail	2.20
<i>RUMBLING BALD ACCESS:</i>	
Rumbling Bald Trail (loop)	1.50
<i>EAGLE ROCK ACCESS:</i>	
Tunnel Trail	0.30
Weed Patch Mountain Trail	2.00
<u>Trails</u> (MILES)	<u>10.80</u>

TRAIL INVENTORY

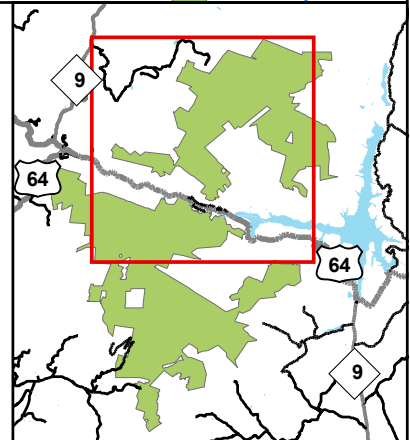


Chimney Rock State Park Trails Inventory

May 2024



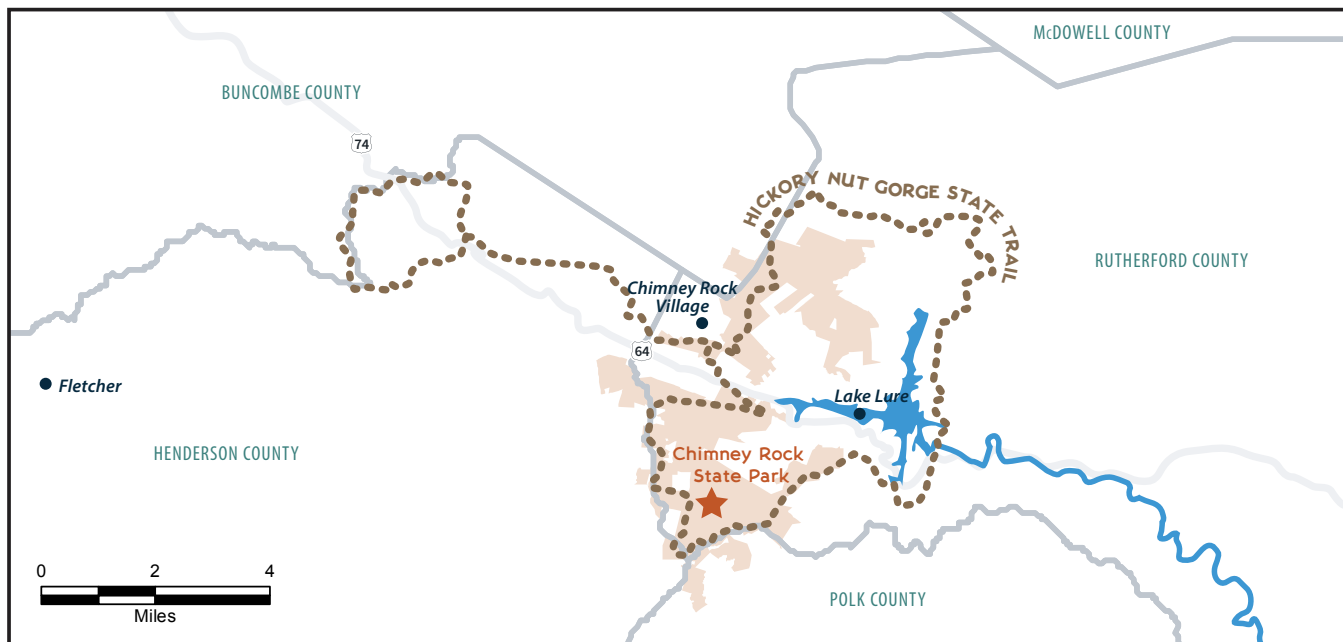
- Hiking Trail
 - Road - Paved
 - Road - Unpaved
 - Facilities
 - State Park
- State Trail System**
- State Trail, Existing
 - State Trail, Planned



HICKORY NUT GORGE STATE TRAIL

Hickory Nut Gorge State Trail, authorized as part of the 2017 budget by the General Assembly, is a unit of the state parks system.

HICKORY NUT GORGE STATE TRAIL



Hickory Nut Gorge State Trail

50 miles - planned
 17.6 miles - designated
 35% trail corridor complete

IV. PLANNING

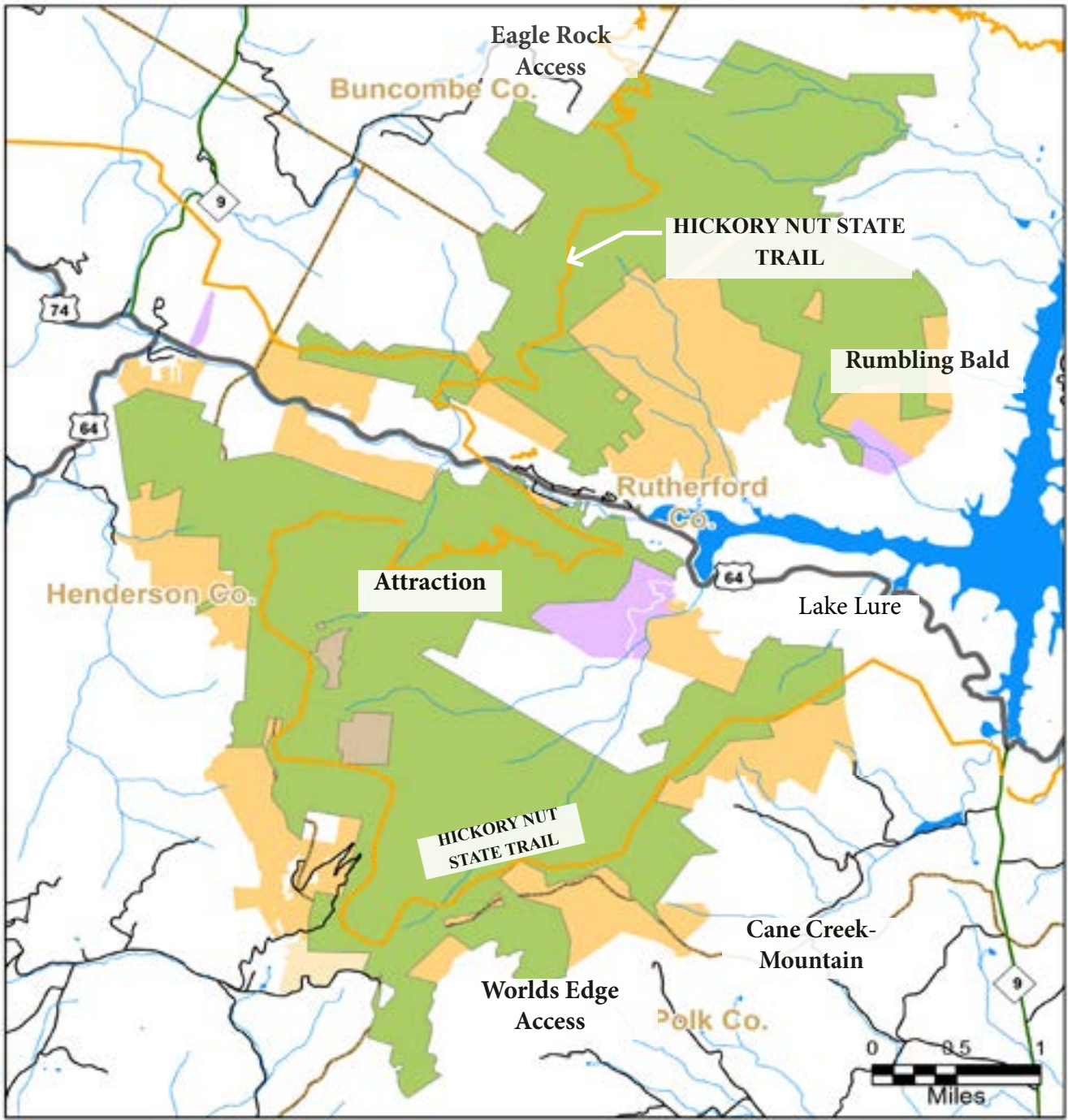


Chimney Rock State Park provides a rugged backcountry camping and hiking experience

LAND PROTECTION FOR STATE PARKS:

To achieve the highest level of connectivity between park properties already owned by the State of North Carolina, further acquisition of land is expected to take place. Additional land will ensure the maximum protection of natural resources, scenic preservation, outdoor recreation and public access. Each park has several tracts of land that have been distinguished as a future need or a critical need for the park. The following map shows Land Acquisition needs for Chimney Rock State Park.

LAND PROTECTION PLAN



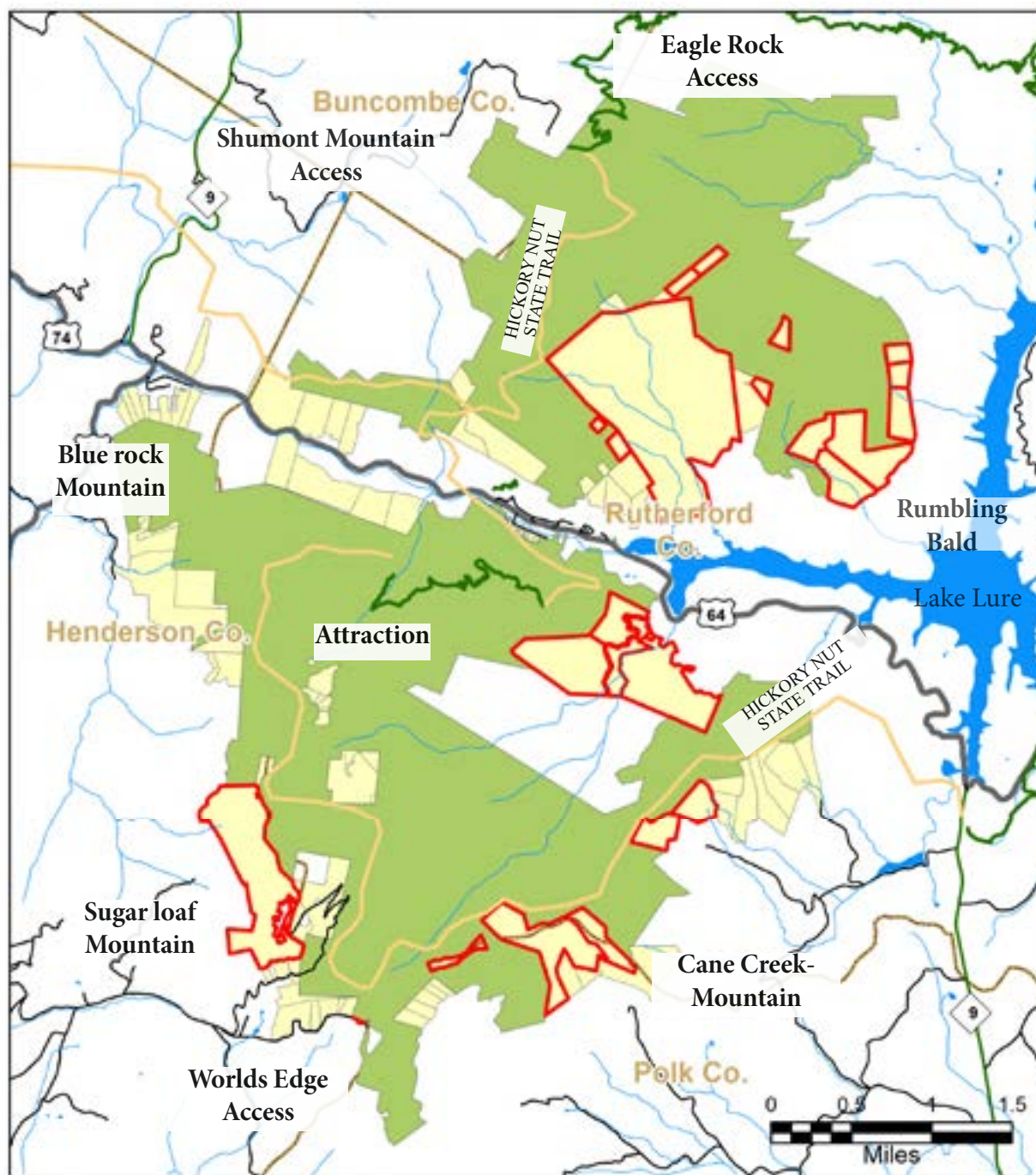
Chimney Rock State Park

- State Parks Unit
- State Trail, planned HICKORY NUT STATE TRAIL
- Land Protection Plan Objectives**
- Primary resource protection
- Inholding
- Scenic protection
- Water quality protection
- Facilities development
- Buffer



June 2024

LAND PROTECTION PLAN - CRITICAL ACRES



Chimney Rock State Park

- State Parks Unit
- Critical Need
- Future Need
- State Trail**
- Designated
- Planned



June 2024



PROJECT LIST

PROJECTS UNDER DESIGN AND CONSTRUCTION		
1	Proposed sewer line extension from Lago Vista Road to attraction	\$1,400,000
PROJECT #	PROJECT TITLE	**CONCEPTUAL COST
GENERAL MANAGEMENT PROJECTS		
1	World Edge Day Use Improvements and Hickory Nut State Trail Development	\$2,430,200
2	L- Bat Cave building renovations and architectural assessment report	\$940,200
3	Chimney Rock Park Road Improvements	\$4,000,000
4	Lago Vista Access Road Development	\$4,000,000
5	Stone Gatehouse exhibits	\$296,200
6	Backcountry campsites North and South of Gorge	\$164,200
7	L- Proposed Spur Trail North of Gorge	\$792,000
8	L-Proposed Storage Building at Shumont Mountain	\$242,100
9	L-Proposed Day Use Improvements at Shumont Mountain	\$663,300
10	Remove lodge building	\$125,000
Total GMP Projects		\$13,653,200

**Planning estimated project cost does not include contingencies, design fee, nor escalation.

DESIGN AND DEVELOPMENT

1. PROPOSED SEWER LINE EXTENSION FROM LAGO VISTA ROAD TO ATTRACTION :

The 13, 728 linear feet (2.60 miles) of sewer line will extend from Lago Vista Road to the Meadows area. In winter 2020, this project was in the design phase. The design consultant will provide a probable cost estimate for future funding purposes. Federally protected plants (Scientific Name: *Sisyrinchium di-chotomum*; Common Name: white irisette) have been documented along the main park road shoulders. Park and natural resources staff will work with NHP/USFWS to identify the location of the sewer line and repaving work prior to construction.



Chimney Rock State Park

Proposed Sewerline extension

May 2024



GMP PROJECT DESCRIPTIONS

1. WORLD EDGE DAY USE IMPROVEMENTS AND HICKORY NUT STATE TRAIL DEVELOPMENT:

The Worlds Edge Access area will provide a satellite back country experience along with day use improvements for the experienced hiker user group. The 9 acre tract will provide day use improvements, and scenic view shed on the southern section of Chimney Rock State Park. The construction of a 3-4 mile backcountry trail and overlooks around the perimeter of Chimney Rock State Park. The point of interests are various waterfalls and connections to Shumont Mountain and Sugar loaf Mountain. Managed access is along Old Jude's Gap Road from Ottanola to Mill Spring.

Federally protected plants have been documented along old logging roads and in the area of the proposed state trail corridor (section heading north and west to backcountry camping area). More substantial population of White Irisette (*Federally endangered*) and individuals of small-whorled pogonia (Federally-Threatened) in this area will require an on the ground review with NHP/USFWS to assess trail corridor and impact.

Park staff will work with Natural resources staff with environmental permitting and rare species assessment.

Scope of work includes:

- Division Internal Project Review and Approval Form (PRAF) should be used;
- Fencing along edge of Overlook;
- Accessible Restroom and shelter;
- Trail head parking (37 spaces);
- Site amenities: (10) picnic tables ;
- Infrastructure improvements are needed to provide electrical, well and well house and septic field, and;
- Communication services;
- 24 feet wide road improvements (1,110 Lin Feet);
- Proposed Storage building for maintenance equipment (Minimum 500 Sq ft.) and
- 16 feet wide wide gravel access road;
- Construct a backcountry connector trail will complete a section of the perimeter trail;
- Overlooks along the Hickory Nut State Trail corridor and
- 3 miles of trails.

PROJECT CONCEPT PLANS

GMP PROJECT #1- Worlds Edge Day Use Improvements and Hickory Nut State Trail Development



Scenic View of Worlds Edge overlooking Chimney Rock State Park proper

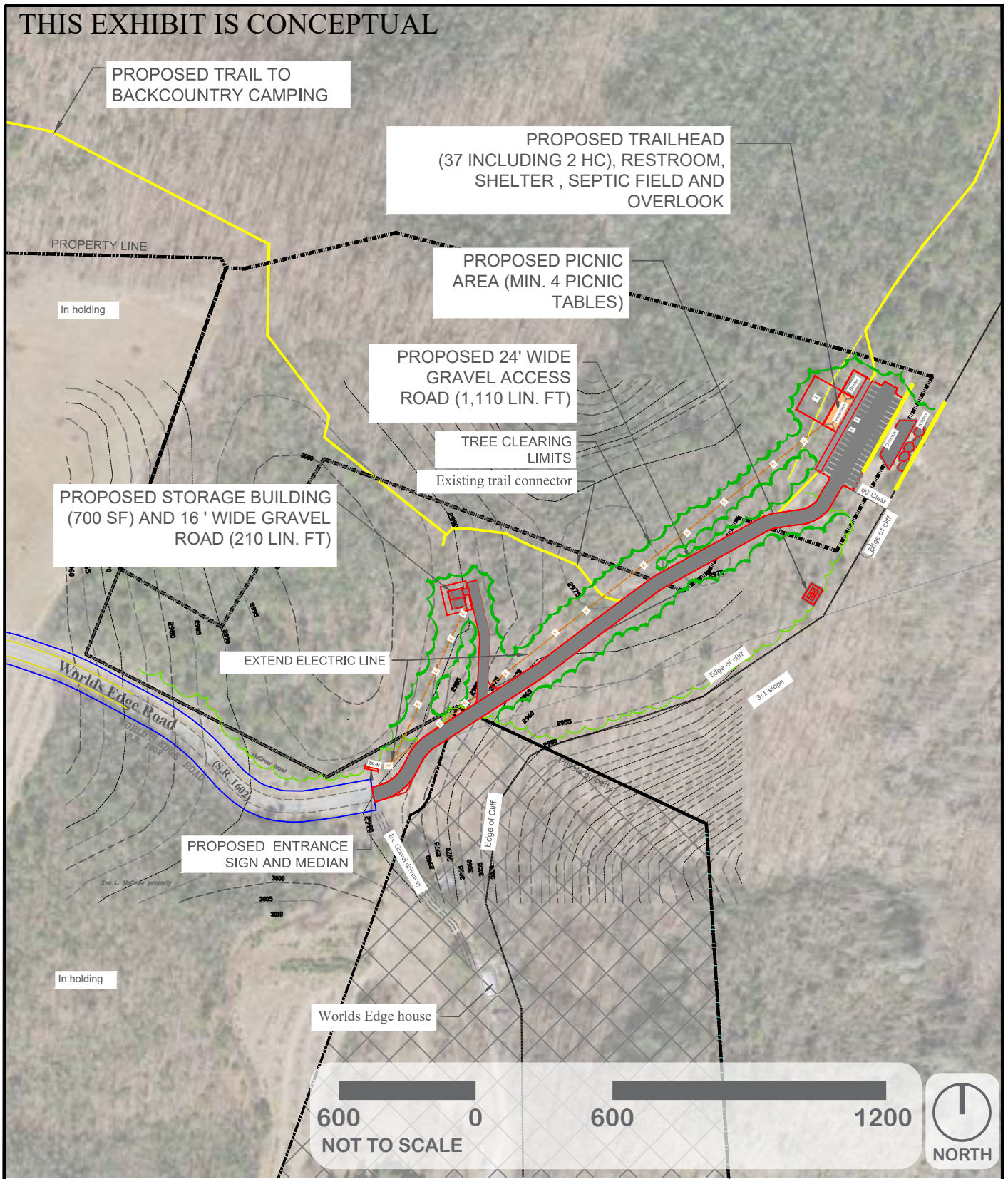
Context map



Trail Development Plan context map from the Chimney Rock State Park Master Plan

PROJECT CONCEPT PLANS

GMP PROJECT #1- Worlds Edge Day Use Improvements and Hickory Nut State Trail Development



GMP PROJECT DESCRIPTIONS

2. L - BAT CAVE BUILDING RENOVATIONS AND ARCHITECTURAL ASSESSMENT REPORT:

Park operations needs to move away from the mountain in order to respond to issues in the back country sections of the park. This land dependent, 14.44 acre tract will clearly separate State Parks from the Chimney Rock LLC, and unsustainable roads and a one -lane bridge. The existing interim office at the attraction does not provide adequate office space for law enforcement, maintenance and administrative staff, infrastructure and communication services.

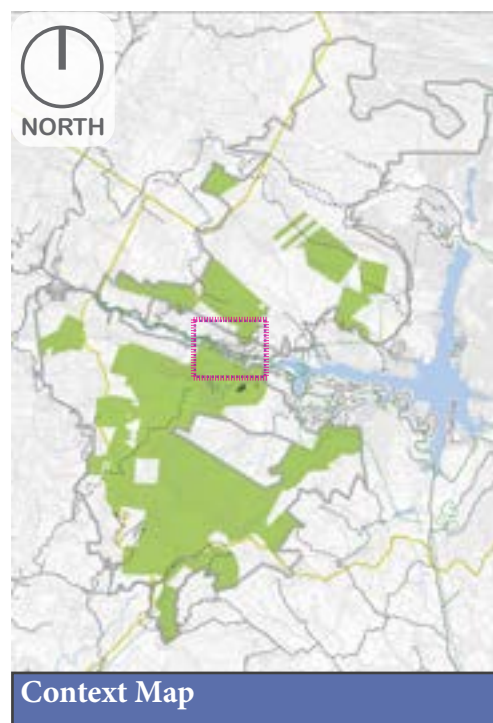
An architectural assessment report will be done to analyze, document, review the structural, mechanical, plumbing, electrical, site work, building code compliance, and provide cost estimates. The former medical office was built in 1996 and has been vacant for several years.

Park staff needs office space away from the Chimney Rock LLC, based on unsustainable roads and a one -lane bridge.

Scope of work includes:

- Division Internal Project Review and Approval Form (PRAF) should be used;
- Architectural assessment report;
- Upgrade communication services;
- Renovate former medical 3,000 square feet office to a park office based on State of North Carolina code compliance;
- Minimum of 10 dedicated parking spaces for park staff;
- Dedicated electric vehicle space (1);
- Maintenance staff office space;
- Temporary accommodations for park staff ;
- Accessible walkway and parking improvements; and
- Storm water improvements.

A cost benefit analysis will be done to determine the feasibility of renovation or new construction methods. The construction cost could range from \$940,000 to \$1,950,000 based on labor, inflation, and cost of materials.



PROJECT CONCEPT PLANS

GMP PROJECT #2: L-BAT CAVE BUILDING RENOVATIONS AND ARCHITECTURAL ASSESSMENT



Existing parking lot will provide minimum of 10 parking spaces



Convert former medical office into a park staff office space



Former check in/receptionist area will be converted to an office administration space or workroom



The air conditioning which is located on the roof, leaked onto the ceiling tiles.

PROJECT CONCEPT PLANS

3. CHIMNEY ROCK PARK ROAD IMPROVEMENTS:

In order to provide a public access road for emergency service, the ingress access road needs to be upgraded to NCDOT standards. Extreme weather, usage, rocky soil, and high elevation conditions have caused the road to deteriorate. Park staff will work with Natural Resources staff to review environmental permitting and rare species assessment.

In order to provide a public access road for emergency service, the 5,280 Lin Ft road (or 1 mile) and street side sidewalk needs to be upgraded to NCDOT standards.

Scope of work includes:

- Division Internal Project Review and Approval Form (PRAF) should be used;
- Installation of a 1" asphalt sealant (1.10 miles or 5808 Lin. Ft.) from the bridge to the ticket plaza, and
- Proposed a street side sidewalk connection.



Extreme weather, usage, rocky soil, and high elevation conditions have caused the Chimney Rock Park entrance road to deteriorate. NCDOT will install a 1" asphalt sealant from the bridge to the ticket plaza.

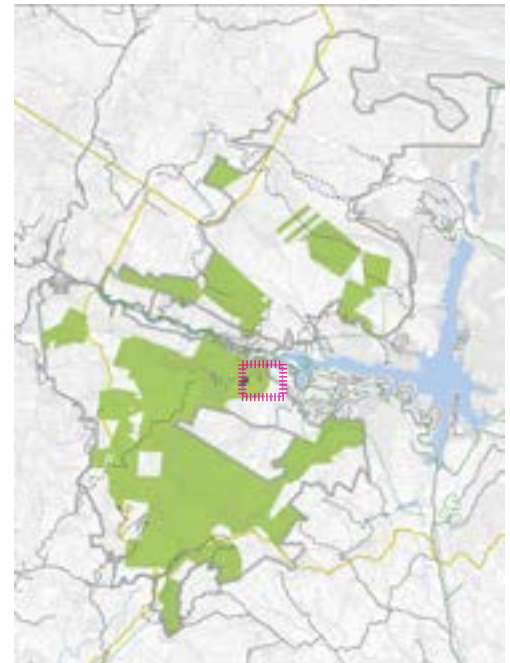
PROJECT CONCEPT PLANS

4. LAGO VISTA ACCESS ROAD IMPROVEMENTS:

The Lago Vista access will provide a secondary public access road for emergency services, the 5,260 Lin Feet Road (or 1.0 mile) and sidewalk needs to be constructed to NCDOT standards. The probable Cost estimate was provided by NCDOT in Fall 2022.

Scope of work includes:

- Division Internal Project Review and Approval Form (PRAF) should be used;
- Abandon 325 lin Ft existing roadway and cul de sac
 - Installation of a 2”/8” connector road (1600 Lin Ft)
 - Proposed a sidewalk connection from the lower elevation to the meadows, and
- Storm water improvements, curb and gutter system.



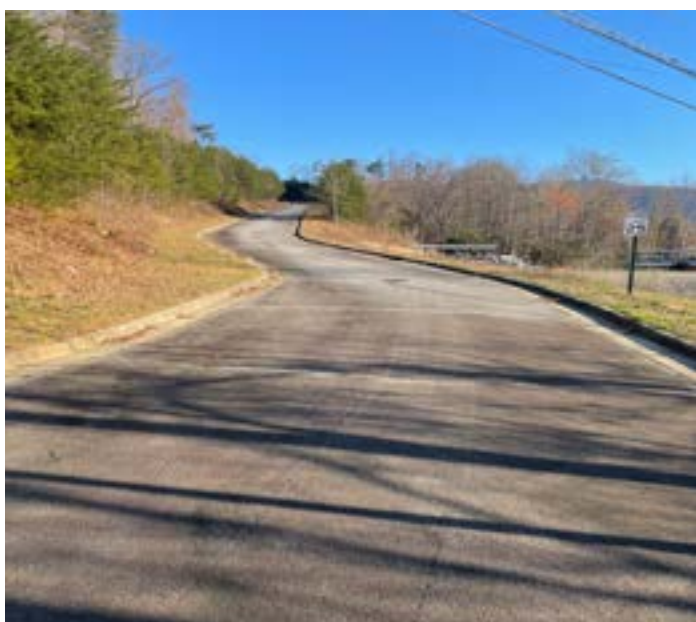
Context Map



The ingress connector road begins at Lago Vista Road and ends at the existing gatehouse or meadow area

PROJECT CONCEPT PLANS

4. LAGO VISTA ACCESS ROAD IMPROVEMENTS:



Lago Vista Connector Road needs to be constructed to NCDOT Standard practices.

GMP PROJECT DESCRIPTIONS (CONTINUED)

5. STONE GATEHOUSE EXHIBITS:

The stone gatehouse buildings are situated at the main park entrance and are the iconic vernacular architectural element to Chimney Rock State Park.

Scope of work includes:

- Division Internal Project Review and Approval Form (PRAF) should be used;
- Convert larger stone gatehouse into a interpretation center;
- Install interpretive map, 3 dimensional (3D) park map of Lake Lure area and Hickory Nut Gorge; and
- Install park development pictures along stone wall; and
- Coordinate with Interpretive staff.

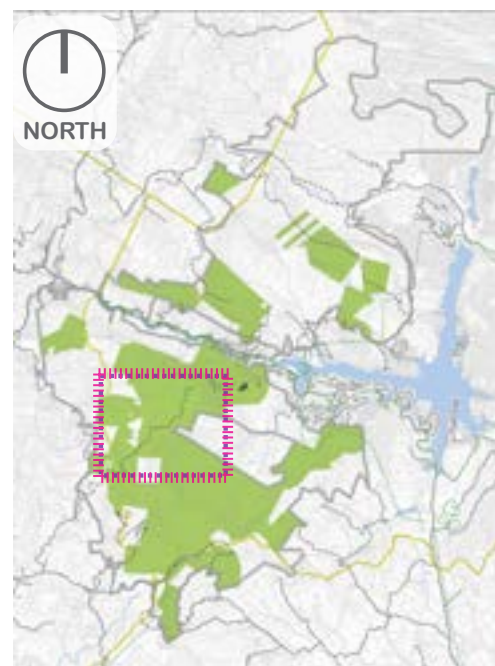


Interior of gatehouse

6. BACK COUNTRY CAMPSITES NORTH AND SOUTH OF GORGE:

Back country campsites will be constructed with limited impact areas. Prior to design and construction, the natural resources staff and park staff will determine feasible locations at Shumont Mountain, Worlds Edge, Sugarloaf Mountain, Orchard, Blue Rock Mountain, and Cane Creek Mountain. The greatest number of rare plant species are associated with rock outcrops (*Granitic Domes and Cliffs*).

The build able areas will be located outside of the Dedicated Nature Preserve. If visitors jeopardize the rare species, then a contingency plan will determine and operational staff has the authority to close sites if rare species are impacted.



Overall Context Map

GMP PROJECT DESCRIPTIONS (CONTINUED)

6. BACK COUNTRY CAMPSITES AT NORTH AND SOUTH OF GORGE (CONTINUED):

Chimney Rock has a demand for climbers and multi day hikers due to the close proximity from Asheville and Charlotte metropolitan area. Back country campsites will be constructed with limited impact areas. Feasible locations that do not impact critical habitats for rare salamander species on the boulders will be identified by park and natural resources staff.

Prior to design and construction, the natural resources staff and park staff will determine feasible locations at Shumont Mountain, Worlds Edge, Sugarloaf Mountain, Orchard, Blue Rock Mountain, and Cane Creek Mountain. (*See Appendix*).

Natural resources staff have identified the habitat and to minimize disturbance of an endemic Hickory Nut Gorge Green Salamander. Operationally, allowing overnight access in this area could lead to decline of the species overall, further disturbance, or even poaching threats.

Park staff will coordinate with the trails specialist and natural resources staff for rare species assessments and environmental permitting review, funding, phasing, design and construction.

Scope of work includes:

- Division Internal Project Review and Approval Form (PRAF) should be used;
- Environmental permits;
- Install privy and water spigot near water source;
- Install appropriate site amenities such as a fire ring (based on operations recommendations of natural resources staff, site by site decision based on seasons and possible burn bans);
- Install hammocks stands using timber construction methods; and
- Install 16 feet x 16 feet impact pads to identify and mark individual campsites.



Example of hammock camping



Fire ring

PROJECT CONCEPT PLANS

GMP PROJECT #6: BACKCOUNTRY CAMPSITES NORTH AND SOUTH OF GORGE

THIS EXHIBIT IS CONCEPTUAL



The existing road conditions at the Orchards backcountry section are established

Enlarged Site Plan

PROJECT CONCEPT PLANS

GMP PROJECT #7: L- Proposed Spur Trail North of Gorge

7. L-PROPOSED SPUR TRAIL NORTH OF GORGE:

The spur trail north of Gorge will provide a challenging backcountry experience for climbers and hikers due to the close proximity from Asheville and Charlotte metropolitan region.

Scope of work includes:

- Division Internal Project Review and Approval Form (PRAF) should be used;
- Hickory Nut Trail North - Eagle Rock Rumbling Bald Ridge, Rumbling Bald climbing access, Round top mountain. Hickory Nut Trail South - access to Worlds Edge, Cane Creek, Sugar loaf, Chimney Rock and Blue Rock; and
- Loop Trail and spur to Hickory Nut Falls.

Prior to design and construction, the environmental permitting staff, natural resources and park staff will determined the feasibility of the corridor.

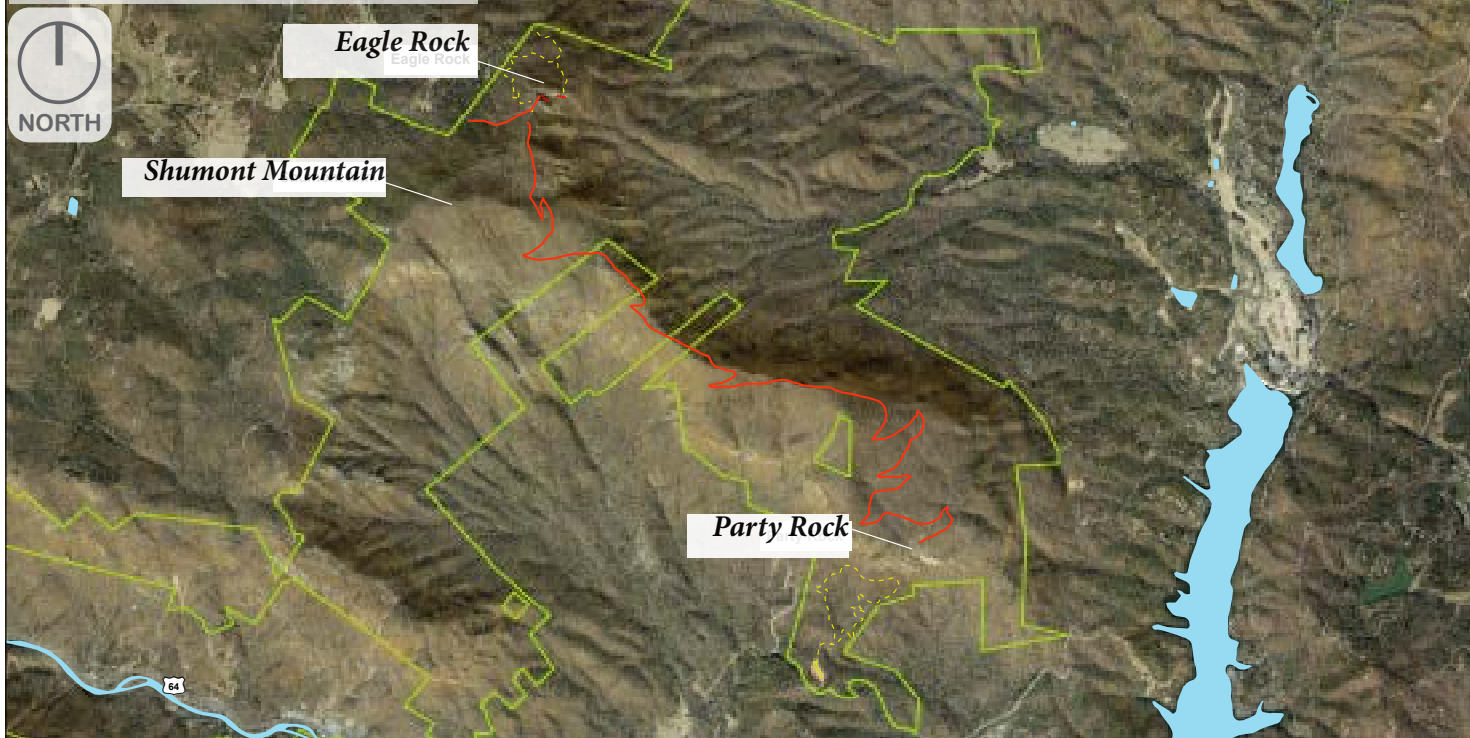


Panoramic view of Eagle Rock and Party Rock

PROJECT CONCEPT PLANS

GMP PROJECT # 7 : L-PROPOSED SPUR TRAIL NORTH OF GORGE

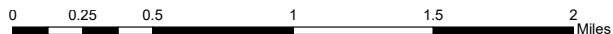
THIS EXHIBIT IS CONCEPTUAL



Rumbling Bald Trail Concepts
Chimney Rock State Park

INTERNAL USE ONLY - NOT INTENDED FOR DISTRIBUTION

June 2024



Contour Interval = 20'



Site conditions include rocky terrain, incompatible soils, and steep slopes

GMP PROJECT DESCRIPTIONS (CONTINUED)

8. L-PROPOSED STORAGE BUILDING AT SHUMONT MOUNTAIN

An equipment storage building will be constructed to provide storage of maintenance equipment, such as a mower, along with emergency response equipment. This is needed for storage away from the mountain and Rocky Branch River. Currently, staff has to trailer equipment 30 miles away from the attraction road which is dangerous, and sharp turning radius.

Managed legal access easement is currently under review thru the State Property office. Therefore, this project is land dependent.

Scope of work includes:

- Division Internal Project Review and Approval Form (PRAF) should be used;
- 6' high perimeter fence (100 Linear Feet);
- Storage building (240 Sq. Ft.) with one bay plus additional storage area;
- 16' wide gravel driveway (Approximately 500 Lin. Ft); and
- Electrical extension (Approximately 1,000 Lin. Ft.).



A proposed storage building will hold and protect maintenance equipment and tools. The structure will be similar to the State Recreational areas, such as Jordan Lake SRA.

PROJECT CONCEPT PLANS

GMP PROJECT #8: PROPOSED STORAGE BUILDING AT SHUMONT MOUNTAIN



GMP PROJECT DESCRIPTIONS (CONTINUED)

9. L - PROPOSED DAY USE IMPROVEMENTS AT SHUMONT MOUNTAIN:

Shumont Mountain is a satellite access area to the park head quarters and back country areas. An additional back country trail head needs to be provided due to capacity issues for advanced user groups. Visitation has increased by 15 % in the past year.

Prior to design and construction, the environmental permitting staff, natural resources and park staff will determine the feasibility of the build able areas based on slopes analysis, soils and sensitive natural resources ecosystems, and rare habitats. The Division is working on the acquisition of adjacent property owners who are willing sellers. Managed legal access easement is currently under review thru the State Property office. Therefore, this project is land dependent.

Scope of work includes:

- Division Internal Project Review and Approval Form (PRAF) should be used;
- Site work and concrete sidewalk (500 Sq ft);
- Construct trail head parking (20 spaces), wheel stops (20), accessible signage;
- Install prefabricated single vault toilet;
- Widen gravel access road from 16 feet to 20 feet (1,300 Lin ft) for emergency response purposes;
- Install park amenities, such as: picnic tables;
- Install electrical extension; (1,300 Lin. Ft.); and
- Install Well and well house based on feasibility.



The existing trail head will be expanded to accommodate additional parking spaces



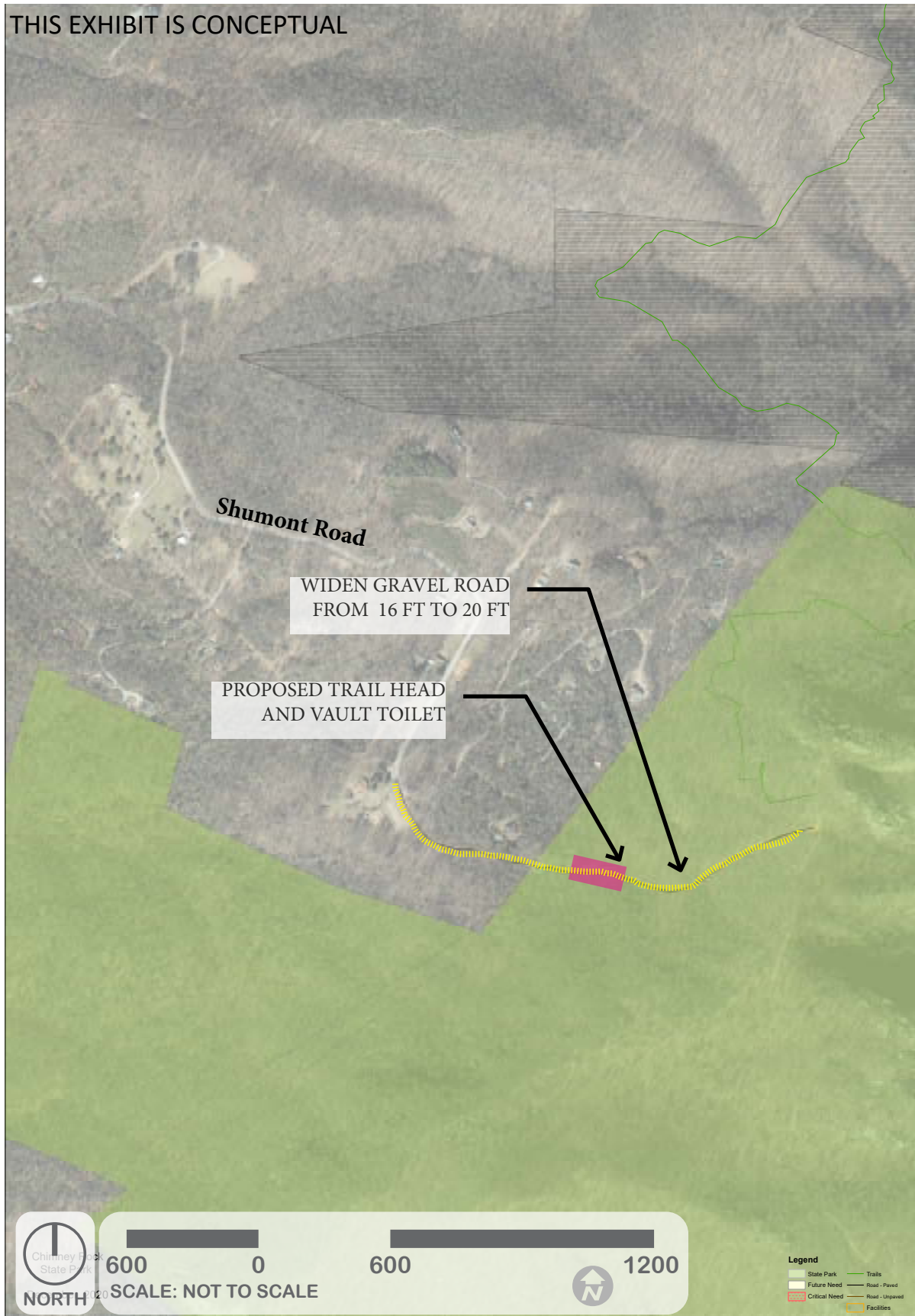
Prefabricated vault toilet will provide park amenities

PROJECT CONCEPT PLANS

GMP PROJECT #9: PROPOSED DAY USE IMPROVEMENTS AT SHUMONT MOUNTAIN



THIS EXHIBIT IS CONCEPTUAL



GMP PROJECT DESCRIPTIONS

10. REMOVE LODGE BUILDING

The lodge, used to be the ticket office or gatehouse for the private Chimney Rock attraction. This structure, built in 1916, is in poor condition, is located on the park access roadway. For example, the roof is falling in and the building has major electrical and sewer issues that does not comply with standard State of North Carolina building codes.

Scope of work includes:

- Division Internal Project Review and Approval Form (PRAF) should be used;
- Removal of 108 year old structure;
- Asbestos abatement and Natural resources assessment;
- Bat habitat assessment/ survey;
- Environmental assessment, and State Historical Preservation Office (SHPO) review; and
- Install interpretive sign within the park, inside the stone gatehouse at the park entrance.



Context Map



The lodge is over 108 years old and the structure is located on a challenging turning radius

PARK MAP

Chimney Rock State Park

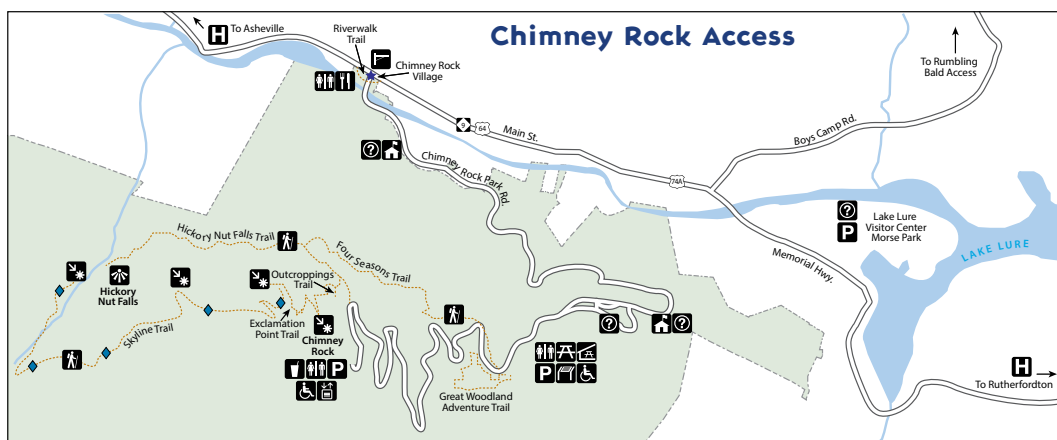
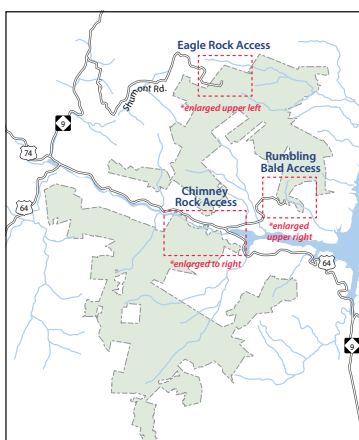


PO. Box 220 Chimney Rock, NC 28720
 GPS: 35.432799, -82.250260
 828-625-1823 chimney.rock@ncparks.gov

Trails			
Trail	Distance	Difficulty	Blaze
Riverwalk Trail	0.1 mile	easy	
Great Woodland Adventure Trail	0.4 mile	easy	
Four Seasons Trail	0.7 mile	strenuous	
Hickory Nut Falls Trail	0.7 mile	moderate	
Outcroppings Trail	0.2 mile	strenuous	
Exclamation Point Trail	0.3 mile	strenuous	
Skyline Trail	1.1 miles	moderate	blue diamond
Rumbling Bald Trail	1.5 miles	moderate	orange circle
Weed Patch Mountain Trail*	8.5 miles	strenuous	red circle
Tunnel Trail	0.15 mile	moderate	white triangle

*Only 1 mile of this trail is on Chimney Rock State Park property

Legend	
	Accessible
	Concession Stand
	Elevator
	Hiking Trail
	Hospital - 911
	Information
	Interpretive Center
	Park Boundary
	Park Gate
	Park Office
	Parking
	Picnic Shelter
	Picnic Area
	Point of Interest
	Restaurant
	Restrooms
	Roads
	Rock Climbing Area
	Waterfall
	Water



APPENDIX

Views of Rumbling Bald Mountain From Eagle Rock



APPENDIX: SIGNIFICANT AND SPECIES OF CONCERN



Natural Community Types:

Chimney Rock State Park Natural Community Types
Acidic Cove Forest (Typic Subtype)
Canada Hemlock Forest (Typic Subtype)
Carolina Hemlock Forest (Mesic Subtype)
Carolina Hemlock Forest (Pine Subtype)
Carolina Hemlock Forest (Typic Subtype)
Chestnut Oak Forest (Dry Heath Subtype)
Chestnut Oak Forest (Mesic Subtype)
Low Elevation Acidic Glade (Biltmore Sedge Subtype)
Low Elevation Basic Glade (Montane Subtype)
Low Elevation Granitic Dome
Low Elevation Rocky Summit (Acidic Subtype)
Montane Alluvial Forest (Small River Subtype)
Montane Cliff (Acidic Herb Subtype)
Montane Cliff (Mafic Subtype)
Montane Oak--Hickory Forest (Acidic Subtype)
Montane Oak--Hickory Forest (Basic Subtype)
Montane Red Cedar-Hardwood Woodland
Pine--Oak/Heath (Typic Subtype)
Rich Cove Forest (Foothills Intermediate Subtype)
Rich Cove Forest (Foothills Rich Subtype)
Rich Montane Seep
Spray Cliff



APPENDIX: SIGNIFICANT AND SPECIES OF CONCERN- WATCH LIST SPECIES

Scientific Name	Common Name	Status	USA Status	S RANK	G RANK	Taxonomic Group
<i>Aneides caryaensis</i>	Hickory Nut Gorge Green Salamander	SR		S1	G1	Amphibian
<i>Plethodon amplus</i>	Blue Ridge Gray-cheeked Salamander	SR		S1	G2	Amphibian
<i>Hypochilus coylei</i>	a Lampshade Weaver	SR		S3	G3	Arachnid
<i>Nesticus brimleyi</i>	a Cave Cobweb Spider	SR		S1	G1G2	Arachnid
<i>Nesticus carolinensis</i>	Linville Caverns Spider	SR		S1	G2	Arachnid
<i>Accipiter striatus</i>	Sharp-shinned Hawk	SR		S1B, S4N	G5	Bird
<i>Catharus guttatus</i>	Hermit Thrush	SR		S2B, S5N	G5	Bird
<i>Catharus ustulatus</i>	Swainson's Thrush	SR		S1B, S5N	G5	Bird
<i>Chaetura pelagica</i>	Chimney Swift	W1		S4B	G4G5	Bird
<i>Chordeiles minor</i>	Common Nighthawk	W1		S2S3B	G5	Bird
<i>Circus hudsonius</i>	Northern Harrier	SR		S1B, S4N	G5	Bird
<i>Coccyzus erythrophthalmus</i>	Black-billed Cuckoo	SR		S2B	G5	Bird
<i>Corvus corax</i>	Common Raven	W2		S3	G5	Bird
<i>Eudocimus albus</i>	White Ibis	W2		S3B, S3N	G5	Bird
<i>Falco sparverius</i>	American Kestrel	SR		S2B, S5N	G5	Bird
<i>Regulus satrapa</i>	Golden-crowned Kinglet	W2, W5		S3S4B, S5N	G5	Bird
<i>Setophaga coronata</i>	Yellow-rumped Warbler	SR		S1B, S5N	G5	Bird
<i>Setophaga magnolia</i>	Magnolia Warbler	SR		S1B, S5N	G5	Bird
<i>Sitta canadensis</i>	Red-breasted Nuthatch	W2, W5		S3B, S4N	G5	Bird
<i>Sphyrapicus varius</i>	Yellow-bellied Sapsucker	SR		S2S3B, S5N	G5	Bird
<i>Spinus pinus</i>	Pine Siskin	W3		S1B, S3N	G5	Bird
<i>Troglodytes hiemalis</i>	Winter Wren	W2, W5		S3B, S5N	G5	Bird



APPENDIX: SIGNIFICANT AND SPECIES OF CONCERN

Scientific Name	Common Name	NC Status	USA Status	S RANK	G RANK	Taxonomic Group
<i>Vermivora cyanoptera</i>	Blue-winged Warbler	SR		S2B, S5N	G5	Bird
<i>Cambarus johni</i>	Carolina Foothills Crayfish	SR		S3	G3	Crustacean
<i>Cambarus lenati</i>	Broad River Stream Crayfish	SR		S2	G2	Crustacean
<i>Calopteryx amata</i>	Superb Jewelwing	SR		S1S2	G5	Dragonfly or Damselfly
<i>Plagiochila raddiana</i>	A Liverwort	SR-P		S1	G5	Liverwort
<i>Myotis lucifugus</i>	Little Brown Bat	SR		S2	G3G4	Mammal
<i>Neotoma floridana haematareia</i>	Southern Appalachian Woodrat	W2		S3S4	G5T4Q	Mammal
<i>Perimyotis subflavus</i>	Tricolored Bat	SR		S3	G3G4	Mammal
<i>Spilogale putorius</i>	Eastern Spotted Skunk	SR-G		S3	G4	Mammal
<i>Anguispira alternata</i>	Flamed Tigersnail	W2		S2S3	G5	Mollusk
<i>Mesomphix andrewsae</i>	Mountain Button	W2		S3S4	G3G4	Mollusk
<i>Bryoerythrophyllum ferruginascens</i>	Rust Foot Moss	SR-D		S1	G3G4	Moss
<i>Philonotis cernua</i>	Dwarf Apple Moss	SR-D		S1	G4	Moss
<i>Cyrto-hypnum pygmaeum</i>	Pygmy Cyrto-hypnum Moss	SR-O		S1	G4G5	Moss
<i>Bellibarbula recurva</i>	Recurved bryoerythrophyllum moss	SR-P		S1	G3G5	Moss
<i>Lampropeltis elapsoides</i>	Scarlet Kingsnake	W1, W5		S3	G5	Reptile
<i>Lampropeltis triangulum</i>	Eastern Milksnake	W2		S3	G5	Reptile
<i>Plestiodon anthracinus</i>	Coal Skink	SR		S2	G5	Reptile
<i>Amelanchier sanguinea</i>	Roundleaf Serviceberry	W1		S3	G5	Vascular Plant
<i>Arabis patens</i>	Spreading Rockcress	SR-T		S1	G3	Vascular Plant
<i>Aronia prunifolia</i>	Purple Chokeberry	W1		S2	GNA	Vascular Plant
<i>Asplenium bradleyi</i>	Bradley's Spleenwort	SR-P		S2	G4	Vascular Plant
<i>Asplenium pinnatifidum</i>	Lobed Spleenwort	SR-P		S2	G4	Vascular Plant



APPENDIX: SIGNIFICANT AND SPECIES OF CONCERN

Scientific Name	Common Name	NC Status	USA Status	S RANK	G RANK	Taxonomic Group
<i>Coreopsis latifolia</i>	Broadleaf Coreopsis	W1		S3	G3	Vascular Plant
<i>Calamagrostis porteri</i>	Porter's Reed Grass	SR-P		S2	G4	Vascular Plant
<i>Carex albursina</i>	White Bear Sedge	W7		S2	G5	Vascular Plant
<i>Carex baileyi</i>	Bailey's Sedge	SR-P	SR-P	S2	G4	Vascular Plant
<i>Carex biltmoreana</i>	Biltmore Sedge	W1		S3	G3	Vascular Plant
<i>Carex leavenworthii</i>	Leavenworth's Sedge	W7		S1	G5	Vascular Plant
<i>Carex ruthii</i>	Ruth's Sedge	W1		S3	G3G4	Vascular Plant
<i>Celtis occidentalis</i>	Mountain Hackberry	W7		S2	G5	Vascular Plant
<i>Clematis catesbyana</i>	Coastal Virgin's-bower	SR-P		S2	G4G5	Vascular Plant
<i>Coreopsis latifolia</i>	Broadleaf Coreopsis	W1		S3	G3	Vascular Plant
<i>Cypripedium parviflorum</i> var. <i>parviflorum</i>	Small Yellow Lady's-slipper	SR-T		S1S2	G5T3T5	Vascular Plant
<i>Dendrolycopodium dendroideum</i>	Prickly Ground-pine	SR-P		S2	G5	Vascular Plant
<i>Dicentra eximia</i>	Bleeding Heart	SR-P		S3	G4	Vascular Plant
<i>Draba ramosissima</i>	Branching Draba	SR-P		S2	G4	Vascular Plant
<i>Fothergilla major</i>	Large Witch-alder	SR-T		S3	G3	Vascular Plant
<i>Goodyera repens</i>	Lesser Rattlesnake-orchid	W1		S2S3	G5	Vascular Plant
<i>Hackelia virginiana</i>	Virginia Stickseed	SR-P		S2	G5	Vascular Plant
<i>Hexalectris spicata</i>	Crested Coralroot	SR-P		S2	G5	Vascular Plant



APPENDIX: SIGNIFICANT AND SPECIES OF CONCERN

Scientific Name	Common Name	NC Status	USA Status	S RANK	G RANK	Taxonomic Group
<i>Houstonia lanceolata</i>	Glade Mountain Houstonia	SR-P		S1	G5T5	Vascular Plant
<i>Huperzia appressa</i>	Appalachian Fir-clubmoss	W1		S3	G5	Vascular Plant
<i>Philadelphus hirsutus</i>	Streambank Mock Orange	W1		S2	G5	Vascular Plant
<i>Philadelphus inodorus</i>	Scentless Mock Orange	W1		S3	G4G5	Vascular Plant
<i>Quercus muehlenbergii</i>	Chinquapin Oak	W1		S2	G5	Vascular Plant
<i>Rhynchospora alba</i>	Northern White Beaksedge	SR-P		S2	G5	Vascular Plant
<i>Robinia hispida</i> var. <i>kelseyi</i>	Kelsey's Locust	SR-O		S1	G4	Vascular Plant
<i>Salix humilis</i>	Tall Prairie Willow	W6				Vascular Plant
<i>Solidago simulans</i>	Granite Dome Goldenrod	SR-L		S2	G2	Vascular Plant
<i>Sphenopholis intermedia</i>	Prairie Wedgescale	W7		S2	G5	Vascular Plant
<i>Stewartia ovata</i>	Mountain Camellia	SR-P		S3	G4	Vascular Plant
<i>Thuja occidentalis</i>	American Arborvitae	W3		SU	G5	Vascular Plant
<i>Trichophorum cespitosum</i>	Deerhair Bulrush	SR-D		S2S3	G5	Vascular Plant
<i>Trillium rugelii</i>	Southern Nodding Trillium	W1		S3	G4	Vascular Plant
<i>Tsuga canadensis</i>	Eastern Hemlock	W5		S4S5	G5	Vascular Plant
<i>Tsuga caroliniana</i>	Carolina Hemlock	W5		S2	G2G3	Vascular Plant
<i>Verbesina virginica</i> var. <i>virginica</i>	Common Frostweed	W7		S2	G5T5	Vascular Plant



APPENDIX: LEGEND

Conservation Code	North Carolina Status
SR	Significantly Rare
SR-G	Game Animal
SR-L	Limited (endemic or near endemic to NC and adjacent states)
SR-T	Throughout (Rare throughout its entire range)
SR-D	Disjunct
SR-P	Peripheral
SR-O	Other
W1 (Animals)	Population in Decline
W1 (Plants)	Rare but Relatively Secure
W2 (Animals)	Rare but Relatively Secure
W2 (Plants)	Rare but Questionable Taxonomy
W3 (Animals)	Poorly Known in NC
W3 (Plants)	Rare but Questionable Documentation
W4 (Animals)	Rare but Questionable Documentation
W4 (Plants)	Rare but Possibly Not Native (not included in this document)
W5 (Animals)	Habitat Threatened
W5 (Plants)	Rare because of Severe Decline to Population or Habitat
W6 (Animals)	Rare but Believed Not Native (not included in this document)
W6 (Plants)	Regionally Rare
W7 (Plants)	Poorly Known in NC

THIS PAGE INTENTIONALLY LEFT BLANK