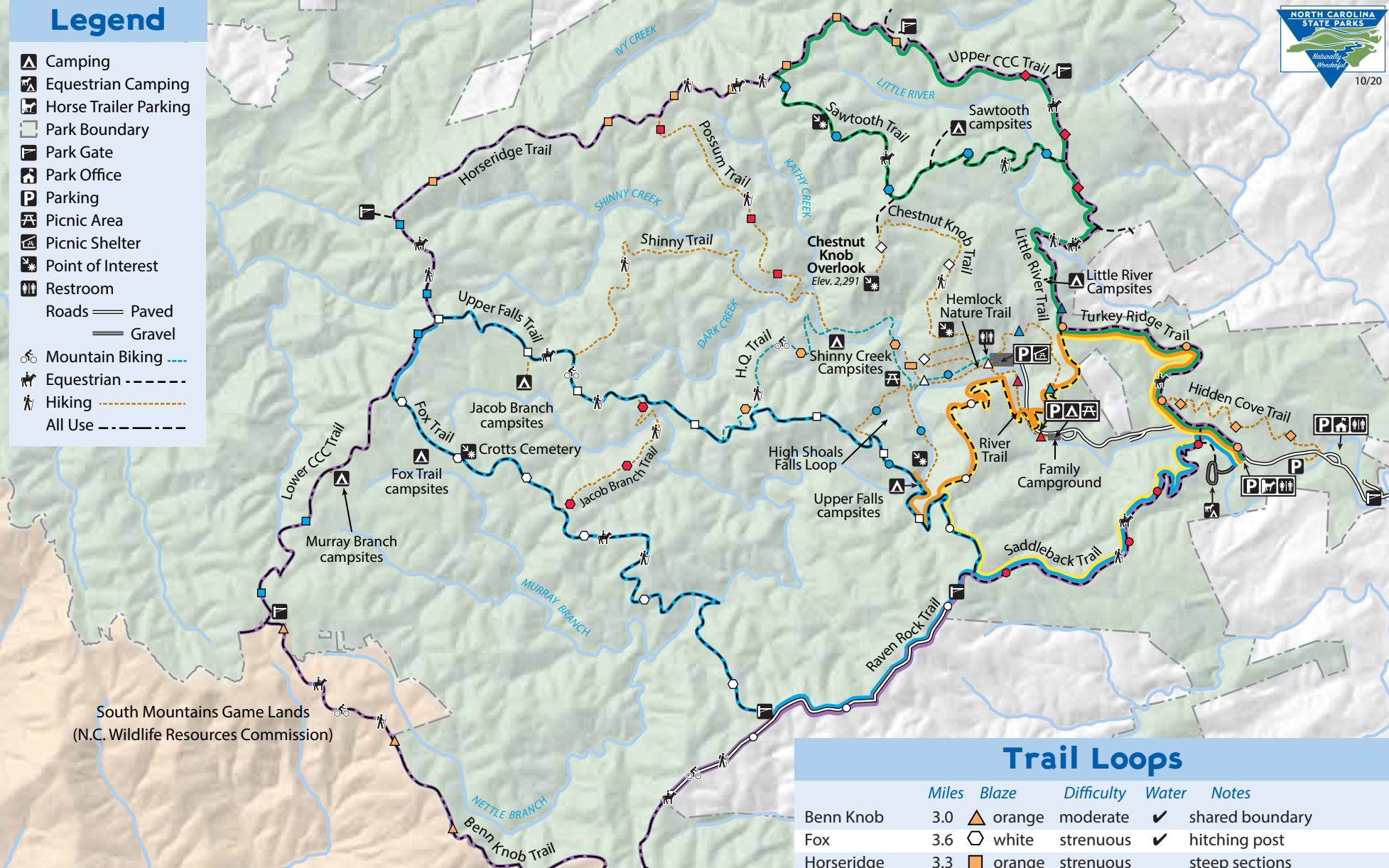


Legend

- Camping
- Equestrian Camping
- Horse Trailer Parking
- Park Boundary
- Park Gate
- Park Office
- Parking
- Picnic Area
- Picnic Shelter
- Point of Interest
- Restroom
- Roads Paved
- Gravel
- Mountain Biking
- Equestrian
- Hiking
- All Use



South Mountains Game Lands
 (N.C. Wildlife Resources Commission)

Loops

	Miles	Color	Difficulty
Saddleback Loop	7.9	Yellow	easy to strenuous
Fox Loop	14.4	Blue	easy to strenuous
Perimeter Loop	19.0	Purple	easy to strenuous
Sawtooth Loop	10.3	Green	moderate to strenuous
Upper Falls In and Back	9.6	Orange	moderate to strenuous

Trail Loops

	Miles	Blaze	Difficulty	Water	Notes
Benn Knob	3.0	Orange triangle	moderate	✓	shared boundary
Fox	3.6	White hexagon	strenuous	✓	hitching post
Horseshoe	3.3	Orange square	strenuous		steep sections
Little River	2.1	Blue triangle	moderate	✓	
Lower CCC	2.5	Blue square	moderate		ride around gate
Raven Rock	5.2	White circle	strenuous	✓	crosses road, hitching post
Saddleback	3.4	Red circle	moderate	✓	narrow single track trail
Sawtooth	2.2	Blue hexagon	strenuous	✓	hitching post, upping block
Turkey Ridge	1.7	Orange circle	moderate		
Upper CCC	1.6	Red diamond	moderate		hitching post, sandy terrain
Upper Falls	3.7	White square	strenuous	✓	hitching post