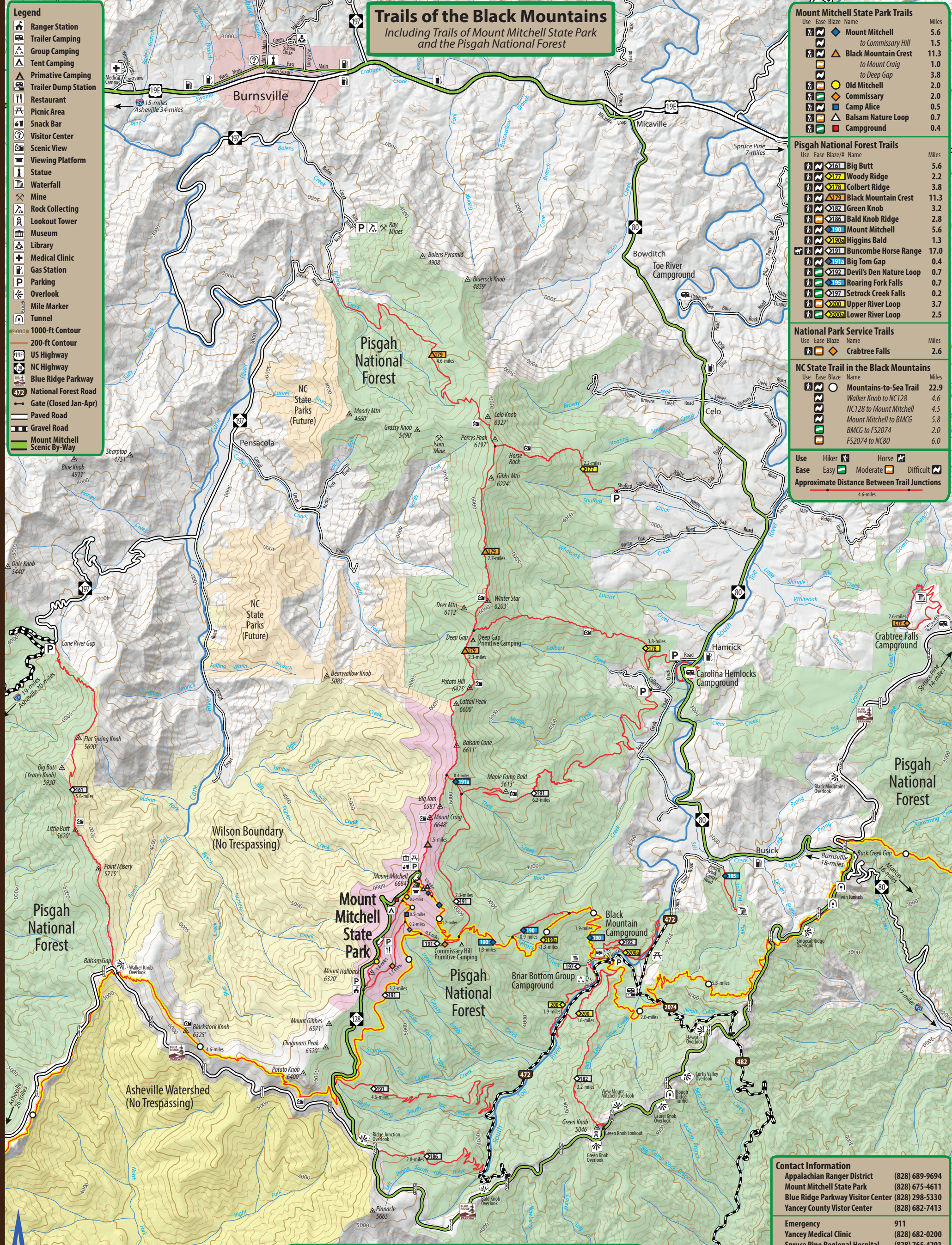


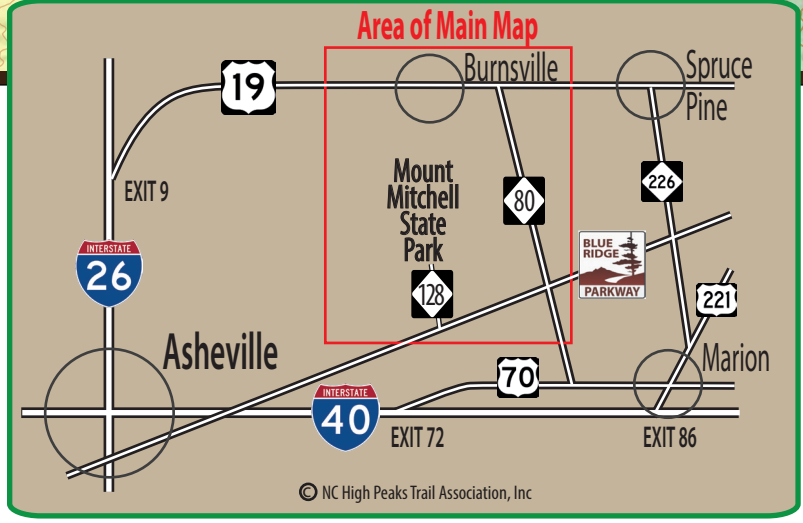
- Legend**
- Ranger Station
 - Trailer Camping
 - Group Camping
 - Tent Camping
 - Primitive Camping
 - Trailer Dump Station
 - Restaurant
 - Picnic Area
 - Snack Bar
 - Visitor Center
 - Scenic View
 - Viewing Platform
 - Statue
 - Waterfall
 - Mine
 - Rock Collecting
 - Lookout Tower
 - Museum
 - Library
 - Medical Clinic
 - Gas Station
 - Parking
 - Overlook
 - Mile Marker
 - Tunnel
 - 1000-ft Contour
 - 200-ft Contour
 - US Highway
 - NC Highway
 - Blue Ridge Parkway
 - National Forest Road
 - Gate (Closed Jan-Apr)
 - Paved Road
 - Gravel Road
 - Mount Mitchell Scenic By-Way

Trails of the Black Mountains
Including Trails of Mount Mitchell State Park and the Pisgah National Forest

- Mount Mitchell State Park Trails**
- | Use | Ease | Blaze | Name | Miles |
|---------|------------|----------|-------------------------------------|-------|
| [Hiker] | [Easy] | [Blue] | Mount Mitchell to Commissary Hill | 5.6 |
| [Hiker] | [Easy] | [Blue] | to Deep Gap | 1.5 |
| [Hiker] | [Moderate] | [Orange] | Black Mountain Crest to Mount Craig | 11.3 |
| [Hiker] | [Moderate] | [Orange] | to Deep Gap | 1.0 |
| [Hiker] | [Easy] | [Blue] | Old Mitchell | 3.8 |
| [Hiker] | [Easy] | [Blue] | Commissary | 2.0 |
| [Hiker] | [Easy] | [Blue] | Camp Alice | 2.0 |
| [Hiker] | [Easy] | [Blue] | Balsam Nature Loop | 0.5 |
| [Hiker] | [Easy] | [Blue] | Campground | 0.7 |
| [Hiker] | [Easy] | [Blue] | Campground | 0.4 |
- Pisgah National Forest Trails**
- | Use | Ease | Blaze | Name | Miles |
|---------|------------|----------|------------------------------|-------|
| [Hiker] | [Easy] | [Blue] | >161 Big Butt | 5.6 |
| [Hiker] | [Easy] | [Blue] | >172 Woody Ridge | 2.2 |
| [Hiker] | [Easy] | [Blue] | >178 Colbert Ridge | 3.8 |
| [Hiker] | [Moderate] | [Orange] | Black Mountain Crest | 11.3 |
| [Hiker] | [Moderate] | [Orange] | >182 Green Knob | 3.2 |
| [Hiker] | [Moderate] | [Orange] | >186 Bald Knob Ridge | 2.8 |
| [Hiker] | [Easy] | [Blue] | >190 Mount Mitchell | 5.6 |
| [Hiker] | [Easy] | [Blue] | >190a Higgins Bald | 1.3 |
| [Hiker] | [Easy] | [Blue] | >191 Buncombe Horse Range | 17.0 |
| [Hiker] | [Easy] | [Blue] | >191a Big Tom Gap | 0.4 |
| [Hiker] | [Easy] | [Blue] | >192 Devil's Den Nature Loop | 0.7 |
| [Hiker] | [Easy] | [Blue] | >195 Roaring Fork Falls | 0.7 |
| [Hiker] | [Easy] | [Blue] | >197 Setrock Creek Falls | 0.2 |
| [Hiker] | [Easy] | [Blue] | >200 Upper River Loop | 3.7 |
| [Hiker] | [Easy] | [Blue] | >200a Lower River Loop | 2.5 |
- National Park Service Trails**
- | Use | Ease | Blaze | Name | Miles |
|---------|--------|--------|----------------|-------|
| [Hiker] | [Easy] | [Blue] | Crabtree Falls | 2.6 |
- NC State Trail in the Black Mountains**
- | Use | Ease | Blaze | Name | Miles |
|---------|--------|--------|-------------------------|-------|
| [Hiker] | [Easy] | [Blue] | Mountains-to-Sea Trail | 22.9 |
| [Hiker] | [Easy] | [Blue] | Walker Knob to NC128 | 4.6 |
| [Hiker] | [Easy] | [Blue] | NC128 to Mount Mitchell | 4.5 |
| [Hiker] | [Easy] | [Blue] | Mount Mitchell to BMCG | 5.8 |
| [Hiker] | [Easy] | [Blue] | BMCG to FS2074 | 2.0 |
| [Hiker] | [Easy] | [Blue] | FS2074 to NC80 | 6.0 |
- Use** Hiker [Hiker] Horse [Horse]
- Ease** Easy [Easy] Moderate [Moderate] Difficult [Difficult]
- Approximate Distance between Trail Junctions**
- 4.6-miles



- Contact Information**
- Appalachian Ranger District (828) 689-9694
 - Mount Mitchell State Park (828) 675-4611
 - Blue Ridge Parkway Visitor Center (828) 298-5330
 - Yancey County Visitor Center (828) 682-7413
- Emergency** 911
- Yancey Medical Clinic (828) 682-0200
 - Spruce Pine Regional Hospital (828) 765-4201
 - Yancey County Sheriff's Office (828) 682-2124
 - Burnsville Police Department (828) 682-4683



Crabtree Falls Chapter-Friends of the Blue Ridge Parkway Task Force with Friends of the Mountains-to-Sea Trail Partners with Appalachian Ranger District, USFS Friends of Mount Mitchell State Park

North Carolina High Peaks Trail Association

Follow us on f

www.ncHighPeaks.org