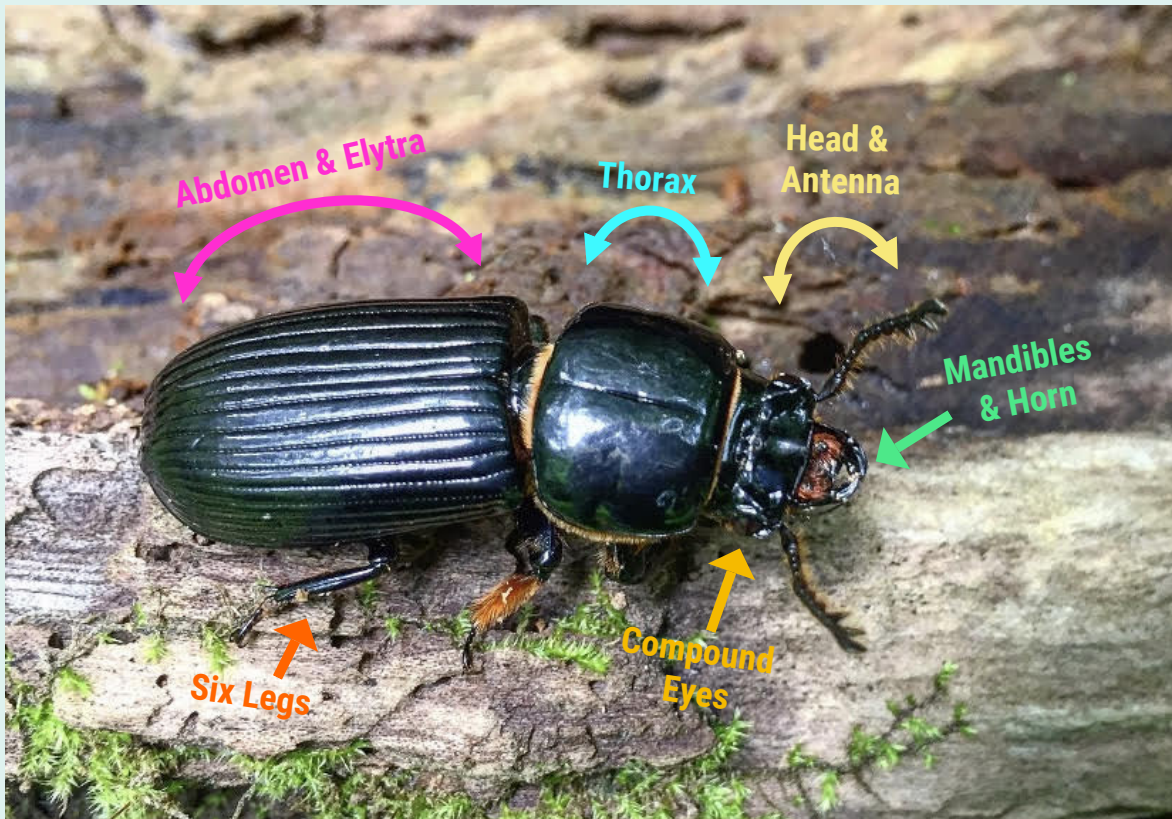


ANATOMY OF A BESS BEETLE



HEAD & ANTENNA

Insects have 3 body segments - the first segment is the head. Bess beetles have 2 large, feathery antennae on their head. Antennae help beetles sense the air and environment around them.

THORAX

The middle body segment is the thorax. The legs and wings of an insect are attached to the thorax. Bess beetles have delicate hind wings under their hard and protective body!

ABDOMEN & ELYTRA

The last & largest body segment is the abdomen. The abdomen contains the beetle's organs! The elytra is hard, grooved, shell-like forewings protecting the hind wings and soft abdomen!

MANDIBLES & HORN

Bess beetles have large, strong mandibles for chewing through decaying wood. Bess beetles use their curved horn to defend their territory & flip other beetles over!

COMPOUND EYES

Beetles have compound eyes with thousands of tiny units to help them see brightness and color. Seeing like a beetle is similar to looking through a kaleidoscope!

SIX LEGS

Bess beetles have 6 jointed legs with a small claw on the end. Bess beetles have golden hairs on their legs - scientists believe this is to help the beetle clean themselves.